

# **REELSTRONG<sup>®</sup>**

## **UTILITY FLEET**

### **PL-4RT5 POWERLOCK™ REEL TRAILER SPECS**



#### **LOWEST TOTAL COST OF OWNERSHIP (TCO) FROM:**

- **LIFETIME WARRANTY PINLESS POWERLOCK™** Reel Bar Securement
- **INDUSTRY LEADING 20" OVERSIZED TURRET BEARING**
- **250K Axial, 90K ft/lbs Moment Load Lockable on 3 Degree Intervals**
- **OPEN TOP, "NON ENCAPSULATED" NYLATRON BEARING SADDLE** (low-coefficient of friction). **OPEN TOP = LESS FRICTION/LOW MAINTENANCE and EASIER PAY-OUT.**
- **No Pins or Cotters to Secure Reel Bar** (*most critical safety point*)
- **Yellow Zinc Electro-Plated and Stainless Precision Machined Components**
- **PRACTICAL:** No Expensive, Unnecessary Bronze Components, yet we Don't Cut Corners and Provide Premium, Heavy Duty, Top-Quality Latches, Hardware, Fittings and Components.

**BUILT FOR SAFETY. BUILT FOR SPEED. BUILT TO LAST.**

**CAPACITIES:** 41,400 GVWR @ 15% Tongue Weight

**AXLES:** Triple 12K Sprung

**WHEELS:** (6) 17.5 x 6.75 HC / 8 on 6.5 BC w/ 0.19 Inset

**TIRES:** (6) LT235/75R17.5 LR-J Tires

**BRAKES:** 12.25" x 5.00" Electric w/ Safety Breakaway Kit

**OVERALL LENGTH:** 440" Approx.

**WIDTH:** 96"

**CURB WEIGHT:** 12,850 lbs. Approx.

*(Trailer Weight will Vary with Options & Finishes Chosen)*

**PAYLOAD: ALL FINAL PAYLOADS BASED ON CHOSEN MODEL AND OPTIONS**

**REEL WEIGHT (PAYLOAD):** 20,000 lbs. Approx. (4x 5,000 lbs. Per Turret)

**REEL DIA:** 72" Maximum

**REEL WIDTH:** 54" Maximum

**REEL BAR DIA:** 2.5"

#### **STANDARD FEATURES**

- **PINLESS POWERLOCK™ LIFETIME WARRANTY VIRTUALLY ZERO MAINTENANCE** Yellow Zinc Electroplated
- **INDUSTRY LEADING 20" OVERSIZED TURRET BEARING w/ 250K Axial, 90K ft/lbs Moment Load Lockable on 3 Deg. Intervals**
- **OPEN TOP, "NON ENCAPSULATED" NYLATRON BEARING SADDLE** (low-coefficient of friction). OPEN TOP = LESS FRICTION/LOW MAINTENANCE and EASIER PAY-OUT. (Haven't Replaced a Saddle in 14 Years)
- Oil Bath Hubs (Greaseable Option All)
- Electric Brakes
- Wheel Chock Holders
- Removable Turrets to Turn Trailer into Flatbed, if Needed.
- **Three (3) POINT STEPS AND HANDHOLDS STANDARD**

#### **STANDARD TRAILER BODY**

- 12" X 3" X ¼" Frame
- 6-Position Adjustable Hitch

## **STANDARD TRAILER BODY (cont.)**

- 3/8" X 36" GR70 Yellow Zinc Safety Chains with Hooks
- 12,000 lbs. Static Front Jack w/ Spring Return
- Ground Lug: Copper Alloy Star Washer Bolted to Frame (Welded Optional)
- Fenders: 1/8" Fabricated Diamond Plate
- (2) Rear 8,000 lbs. Static Stabilizer Jacks

## **WIRING**

- DOT / ICC-- FMVSS / CMVSS Approved LED ULTRA- HIGH VISIBILITY 180 DEGREE BULLET Marker and Clearance Lights
- LED Sealed Beam Rubber Mounted Stop, Turn, Tail and Marker Lights
- Breakaway Kit with Absorbed Glass Mat (AGM) Battery
- 100% Sealed Heat-Shrunked Wiring Connections w/ Full Loom
- FULLY PROTECTED 7 or 6 Way Female Plug acts as Junction Box Recessed in FRAME RAIL. No Easily Damaged Plastic Junction Boxes

## **PAINT**

- Biodegradable Pretreat Acid Cleaning (Superior to re-used sandblasting material that can impregnate metals with oil)
- Seams Caulked
- Rust Preventative 2-Part Epoxy Primer
- Two-Part Polyurethane Topcoats (2 topcoats)
- Standard Colors: White and CAT Yellow (Custom Available)

## **OPTIONS**

- 13 HP HONDA Engine Hydraulic Power Pack Comes STANDARD w/ ENGINE COVER, 15 Gallon Reservoir, Replaceable Oil Filter, Pressure Gauge and Solar Fade Resistant Plastic Control Placard. (Electric Start Optional)
- Ten (10) Year Galvanized Structural Warranty (2-Year Painted)
- Rotating Arbor Ground
- 3,300 ft/lbs Torque Hydraulic Take-up Retriever. (Motor Spooled w/ Reel Brake ILO Cross-Over Relief Valve for Smooth Instant Reel Stoppage)
- 2-7/16" Universal Adapter for Capstan and Power Reel Attachments
- Hydraulic Hose Rotary Swivel Union (*manages & eliminates loose hydraulic hoses*)
- 7 Inch General Purpose Capstan
- Collapsible Power Reel
- 16" Bronze Alloy Ventilated Reel Brake w/ Ventilated Guard
- All Stainless Steel Fasteners (1/2" and under)
- Anti-Skid/Anti-Glare Sand Paint on all Walking Surfaces
- Various Trailer Light Plugs (Customer Choice)
- Aluminum or Steel Toolbox
- Air Brakes w/ ABS
- 16" Long 6-Bolt Hitch Extension (w/ 52" Safety Chains and Breakaway Cable Extension)
- 3" Lunette Eye

### **OPTIONS (cont.)**

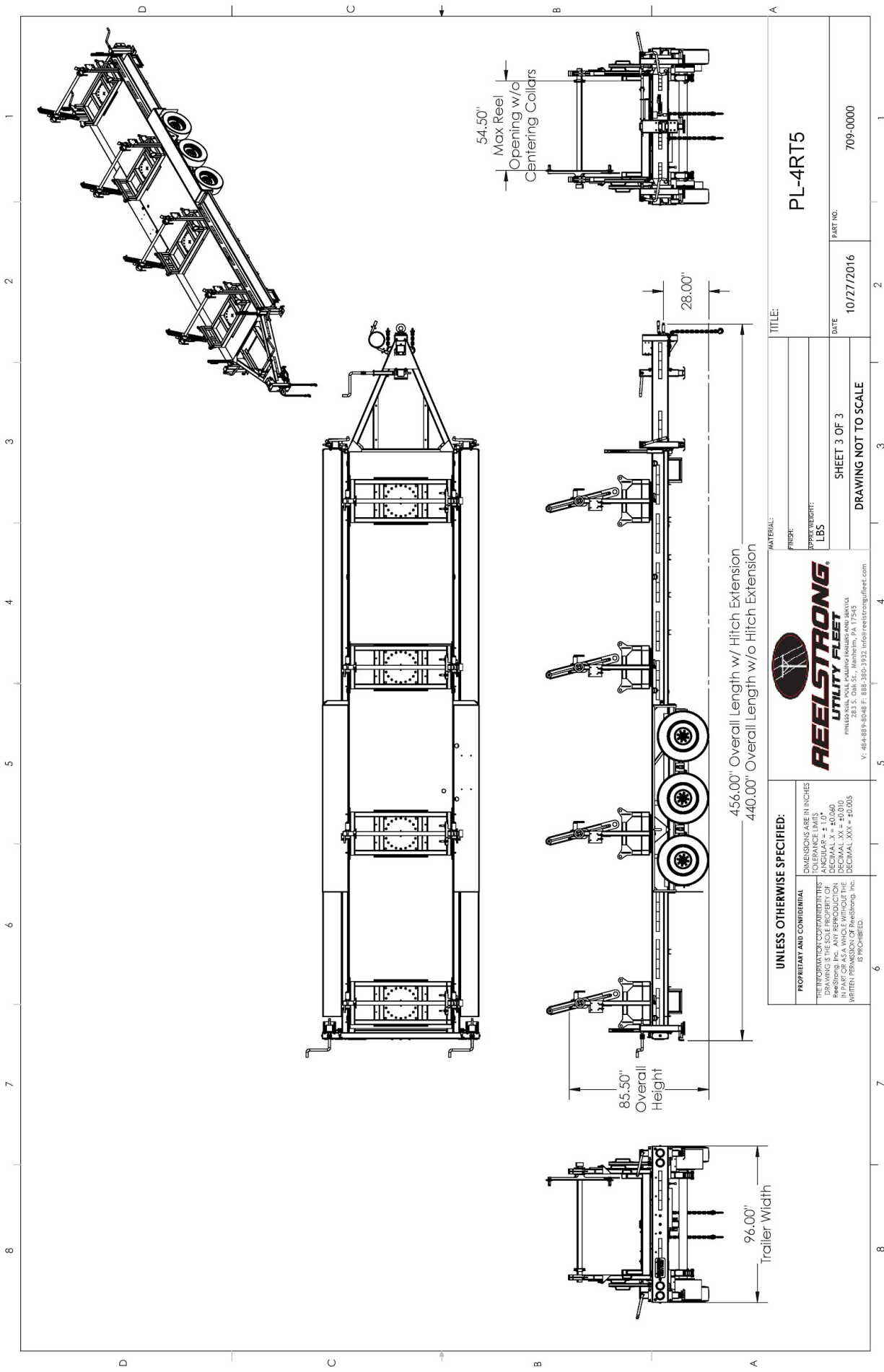
- Wiring Connections Soldered and Sealed w/ Heat Shrink Tubing
- Plug-and-Play Sealco Wiring Harness
- Wheel Chocks: Rubber or All Weather Galvanized Grip Strut
- Spare Tire and Mount
- Solar Charged Breakaway Kit
- Strobe Warning Lights
- Hydraulic Front Jack
- Hydraulic Rear and Intermediate Outriggers
- Telescoping Rear and Intermediate Outriggers
- Truck-Lite Lighting
- Lug Nut Indicators

### **OPTIONAL PREMIUM ROLLER PACKAGE**

- OVD Fairlead Rollers (One “1” Per Turret)
- URD Fairlead Rollers (Two “2” Per Turret)
- OVD/URD Cable Gathering Windows
- URD Arching/Traversing Fairlead

### **OPTIONAL ECONOMY ROLLER PACKAGE**

- OVD Fairlead Rollers (One “1” Per Turret)
- URD Fairlead Rollers (Two “2” Per Turret)
- OVD/URD Cable Gathering Windows
- URD Cable Gathering Window



<b>UNLESS OTHERWISE SPECIFIED:</b> <small>PROPRIETARY AND CONFIDENTIAL</small> <small>THE INFORMATION CONTAINED IN THIS DRAWING IS THE SOLE PROPERTY OF REELSTRONG UTILITY FLEET, INC. AND IS TO BE USED ONLY FOR THE PROJECT AND IN PART FOR AS A WHOLE WITHOUT THE WRITTEN PERMISSION OF Reelstrong, Inc. IS PROHIBITED.</small>		<small>DIMENSIONS ARE IN INCHES</small> <small>TOLERANCE LIMITS</small> <small>DECIMAL .XX = ±0.060</small> <small>DECIMAL .XX = ±0.010</small> <small>DECIMAL .XXX = ±0.005</small>	
<b>REELSTRONG.</b> <small>UTILITY FLEET</small> <small>283 S. Oak St., Manheim, PA 17345</small> <small>P: 64-889-8048 F: 888-380-3932 info@reelstrongfleet.com</small>		<small>TITLE:</small> <b>PL-4RT5</b>	
<small>MATERIAL:</small> <b>LBS</b>		<small>DATE:</small> <b>10/27/2016</b>	
<small>PROF:</small> <b>LBS</b>		<small>PART NO.:</small> <b>709-0000</b>	
<small>SHEET 3 OF 3</small> <small>DRAWING NOT TO SCALE</small>		<small>DATE:</small> <b>10/27/2016</b>	