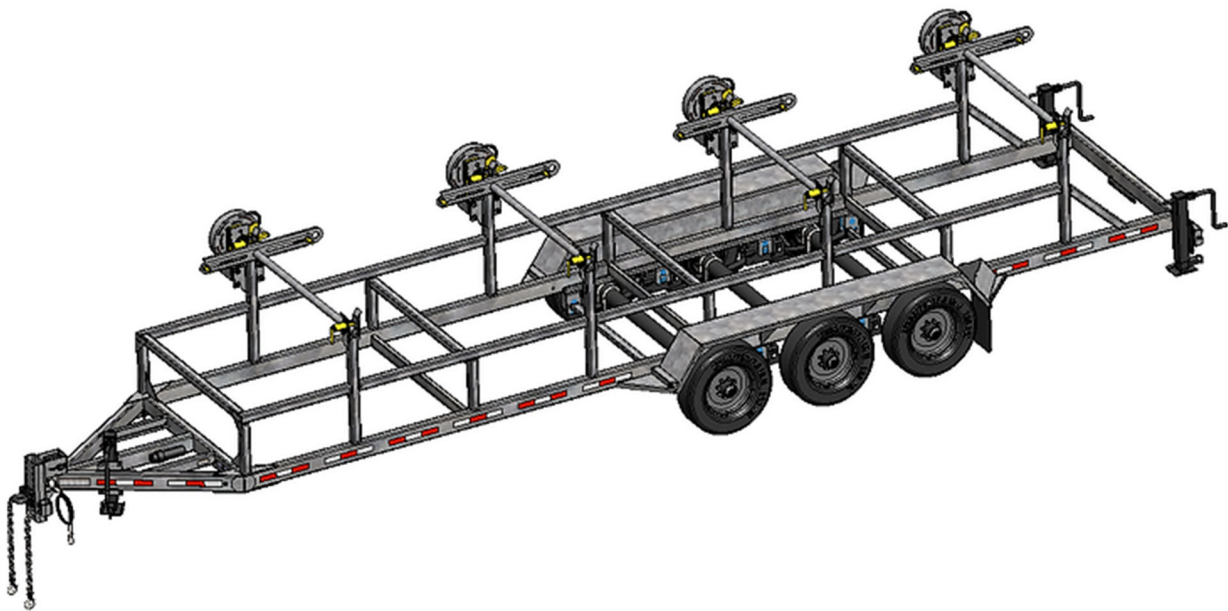


# **REELSTRONG<sup>®</sup>**

## **UTILITY FLEET**

### **MRST4-84-60 POWERLOCK™ REEL TRAILER SPECS**



#### **EXCLUSIVE STANDARD ADDED VALUE:**

- POWERLOCK™ Technology Provides Industry Leading Safety, Ease of Use, Low Maintenance and Durability.
  - SAFETY and Peace of Mind
  - No Pins, Cotters, or Lanyards that Secure the Reel Arbor (which is the most critical safety point).
  - Faster Reel Loading, Unloading, and Deployment Reduces Labor Costs and Fatigue on Workers.

***BUILT FOR SAFETY. BUILT FOR SPEED. BUILT TO LAST.***

**CAPACITIES:** 41,400 lbs. GVWR @ 15% Tongue Weight

**AXLES:** Triple 12K lbs. Sprung

**WHEELS:** (6) 17.5 x 6.75 HC / 8 on 6.5 BC w/ 0.19 Inset

**TIRES:** (6) 235/75R17.5 LR-H Tires

**BRAKES:** 12.25" x 5.00" Electric w/ Safety Breakaway Kit

**PAYLOAD: ALL FINAL PAYLOADS BASED ON CHOSEN MODEL AND OPTIONS**

**REEL WEIGHT (PAYLOAD):** 34,000 lbs. (8,500 lbs. per Reel)

**REEL DIAMETER:** (4) 84" Maximum

**REEL WIDTH:** 60" Maximum

**REEL SHAFT DIAMETER:** 2.50" Tube w/ Centering Collars

**OVERALL LENGTH:** See Drawing.

**OVERALL WIDTH:** See Drawing.

**OVERALL WEIGHT:** 7,400 lbs. Approx. (Actual Trailer Weight will Vary with Options & Finishes Chosen)

### **STANDARD FEATURES**

- POWERLOCK™ Technology Provides Industry Leading Safety, Ease of Use, Low Maintenance and Durability.
- Oil Bath Hubs (Greaseable Option All)
- Electric Brakes
- Wheel Chock Holders

### **STANDARD TRAILER BODY**

- Heavy Duty 6" X 3" X ¼"
- 7-Position Adjustable Hitch
- ½" X 36" GR70 Yellow Zinc Safety Chains with Hooks
- 12,000 lbs. Static Front Jack w/ Spring Return
- Ground Lug: Copper Alloy Bolted to Frame
- Fenders: ⅛" Tread Plate
- A-frame: Approx. 5' Long

### **WIRING**

- DOT / ICC Approved LED Lights and Conspicuity Reflective Tape

*—All specifications / designs are subject to change without notice - All GVWR and reel capacities are de-rateable to your needs.*

## **WIRING (cont.)**

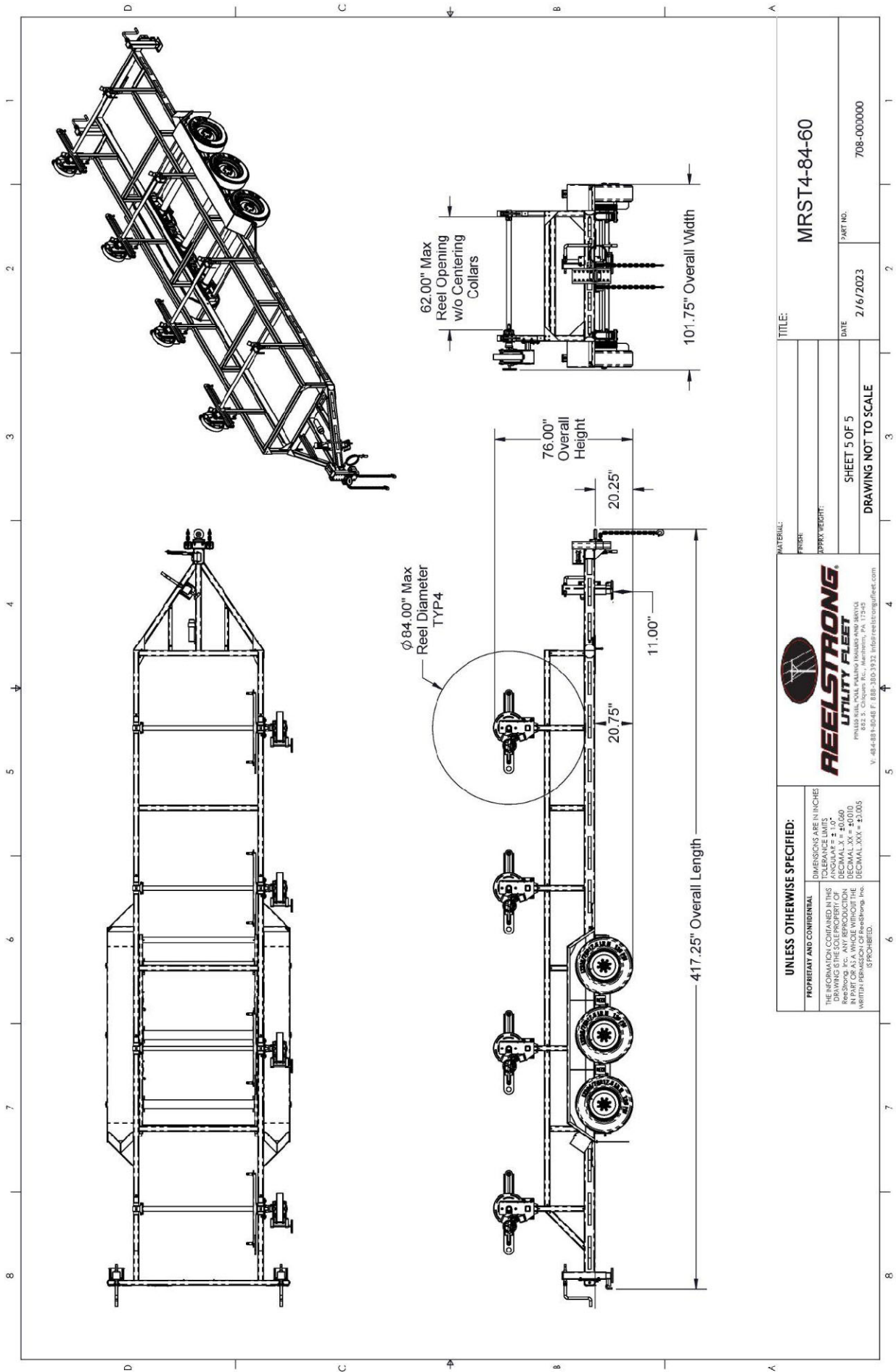
- FMVSS / CMVSS Standard 108 LED Lighting
- Sealed Beam, Rubber Mounted Stop, Turn, Tail and Marker Lights
- 100% Sealed Heat-Shrunked Wiring Connections w/ Full Loom
- Breakaway Kit with Absorbed Glass Mat (AGM) Battery

## **PAINT**

- Biodegradable Pretreat Acid Cleaning (Superior to re-used sandblasting material that can impregnate metals with oil)
- Seams Caulked
- Rust Preventative 2-Part Epoxy Primer
- Standard Colors: Red, Black, White and CAT Yellow

## **OPTIONS**

- 10-Year Galvanized Structural Warranty (2-Year Painted)
- 13 HP HONDA Engine Hydraulic Power Pack Comes STANDARD w/ ENGINE COVER, 15 Gallon Reservoir, Replaceable Oil Filter, Pressure Gauge and Solar Fade Resistant Plastic Control Placard. (Electric Start Optional)
- 3,300 or 4,800 ft/lbs Torque Hydraulic Take-up Retriever. (*Motor Spooled w/ Reel Brake ILO Cross-Over Relief Valve for Smooth Instant Reel Stoppage*)
- 2-7/16" Universal Adapter for Capstan and Power Reel Attachments
- 7 Inch General Purpose Capstan
- Collapsible Power Reel
- Rotating Arbor Ground
- Auxiliary Hydraulic Quick-Connect Ports
- Rewind Leveler
- 16" Bronze Alloy Ventilated Reel Brake w/ Ventilated Guard
- 16" Long 6-Bolt Hitch Extension (w/ 52" Safety Chains and Breakaway Cable Extension)
- Aluminum or Steel Toolbox
- 10K-HD / 15K / 20K Axles Available w/ Air Brakes
- Anti-Lock Brakes (ABS)
- Wiring Connections Soldered and Sealed w/ Heat Shrink Tubing
- Plug-and-Play Sealco Wiring Harness
- Wheel Chocks: Rubber or All Weather Galvanized Grip Strut
- Spare Tire and Mount
- Solar Charged Breakaway Kit
- Strobe Warning Lights
- All Stainless Steel Fasteners (1/2" and under)
- Hydraulic Front Jack
- Rear Underground Fairlead Roller Attachment
- Truck-Lite Lighting
- Lug Nut Indicators



<p><b>UNLESS OTHERWISE SPECIFIED:</b></p> <p>DIMENSIONS ARE IN INCHES          TOLERANCES UNLESS OTHERWISE SPECIFIED:          DECIMAL - .015"          DECIMAL - .XX" = +0.060          DECIMAL - .XXX" = +0.010          DECIMAL - .XXX" = +0.005          WRITING PERMISSION OF ReelStrong, Inc. IS PROHIBITED.</p>		<p><b>REELSTRONG UTILITY FLEET</b></p> <p>REELSTRONG UTILITY FLEET          832 S. Clingens Run, Merthyr, PA 17348          P.O. Box 100, Merthyr, PA 17348          W. 484-881-8048 F. 888-380-3932 info@reelstrongfleet.com</p>	
<p><b>PROPRIETARY AND CONFIDENTIAL</b></p> <p>THE INFORMATION CONTAINED IN THIS DRAWING IS THE SOLE PROPERTY OF REELSTRONG, INC. ANY REUSE OR REPRODUCTION IN PART OR AS A WHOLE WITHOUT THE WRITING PERMISSION OF REELSTRONG, INC. IS PROHIBITED.</p>		<p><b>TITLE:</b> MRST4-84-60</p>	
<p><b>MATERIAL:</b></p> <p><b>FINISH:</b></p> <p><b>DRY WEIGHT:</b></p>		<p><b>SHEET 5 OF 5</b></p> <p><b>DRAWING NOT TO SCALE</b></p>	
		<p><b>DATE:</b> 2/16/2023</p>	<p><b>PART NO.:</b> 708-000000</p>