

REELSTRONG®

UTILITY FLEET

PD POLE DINKY SPECS



EXCLUSIVE STANDARD ADDED VALUE:

- Industry Leading Safety, Ease of Use, Low Maintenance and Durability.
- Low Center of Gravity to Prevent Roll-Over.
- Three-Strap Pole Securement to Ensure Load Stays in Place Throughout Transportation.
- Deep V Cradles to Prevent Poles from Rolling, Shifting, or Sliding.
- Great Value

BUILT FOR SAFETY. BUILT FOR SPEED. BUILT TO LAST.

CAPACITIES

- PD3: 3,000 lbs. GVWR
- PD7: 8,050 lbs. GVWR @ 15% Tongue Weight
- PD10: 11,050 lbs. GVWR @ 15% Tongue Weight
- PD15: 17,250 lbs. GVWR @ 15% Tongue Weight

AXLES

- PD3: 3K lbs. Torsion
- PD7: 7K lbs. Torsion
- PD10: 10K lbs. Sprung
- PD15: 15K lbs. Sprung

WHEELS

- PD3: (2) 15 x 6JJ / 5 on 4.5 BC w/ Zeraset
- PD7: (2) 16 x 6K / 8 on 6.5 BC w/ Zeraset
- PD10: (2) 17.50 x 6.75 HC / 8 on 6.5 BC w/ 0.19 Inset
- PD15: (4) 17.5 x 6.75 HC / 8 on 275mm BC w/ 5.60 Outset

TIRES

- PD3: (2) ST-205/75R15 LR-C Tires
- PD7: (2) ST-235/85R16 LR-E Tires
- PD10: (2) ST-215/75R17.5 LR-H Tires
- PD15: (4) ST-215/75R17.5 LR-H Tires

BRAKES

- PD3: No Brakes
- PD7: 12.00" x 2.00" Electric w/ Safety Breakaway Kit
- PD10: 12.00" x 3.38" Electric w/ Safety Breakaway Kit
- PD15: 12.25" x 5.00" Electric w/ Safety Breakaway Kit

PAYLOAD: ALL FINAL PAYLOADS BASED ON CHOSEN MODEL AND OPTIONS

POLE WEIGHT (PAYLOAD)

- PD3: 1,750 lbs. Approx.
- PD7: 6,250 lbs. Approx.
- PD10: 9,200 lbs. Approx.
- PD15: 14,500 lbs. Approx.

OVERALL LENGTH

- PD3: 112.00"
- PD7: 112.00"
- PD10: 112.00"
- PD15: 111.25"

OVERALL WIDTH

- PD3: 79.25"
- PD7: 79.25"
- PD10: 79.25"
- PD15: 79.25"

CURB WEIGHT:

- PD3: 1,250 lbs. Approx.
- PD7: 1,800 lbs. Approx.
- PD10: 1,850 lbs. Approx.
- PD15: 2,750 lbs. Approx.

Actual Trailer Weight will Vary with Options & Finishes Chosen.

POLE SEAT HEIGHT

- PD3: 28.75"
- PD7: 29.25"
- PD10: 39"
- PD15: 40"

STANDARD FEATURES

- Oil Bath Hubs (Greaseable Option All)
- Wheel Chock Holders
- Electric Brakes (on PD7/PD10/PD15)
- Swing-Away Front Jack Stand
- Tongue Lift Handles
- Cradles: Deep V w/ Saw-Tooth Grip (PD3/PD7/PD10)

POLE SECUREMENT

- Binding: (3) 4" Strap Binders w/ 4" Ratchet Straps

STANDARD TRAILER BODY

- Heavy Duty 5" Channel Frame (PD3/PD7/PD10)
- Heavy Duty Rectangular Tube Frame (PD15)
- 1/8" Tread Plate Fenders
- 5 Position Adjustable Hitch
- 3/8" X 36" GR70 Yellow Zinc Safety Chains with Hooks
- Expanded Metal Cargo Area

WIRING

- DOT / ICC Approved LED Lights and Conspicuity Reflective Tape
- Internal Cat Track Protects Wiring (and air brakes if applicable)
- Removable Rear Access Door for Cat Track and Wiring
- Sealed Beam, Rubber Mounted Stop, Turn, Tail and Marker Lights
- 100% Sealed Heat-Shrunked Wiring Connections w/ Full Loom

WIRING (cont.)

- Breakaway Kit with Absorbed Glass Mat (AGM) Battery

PAINT

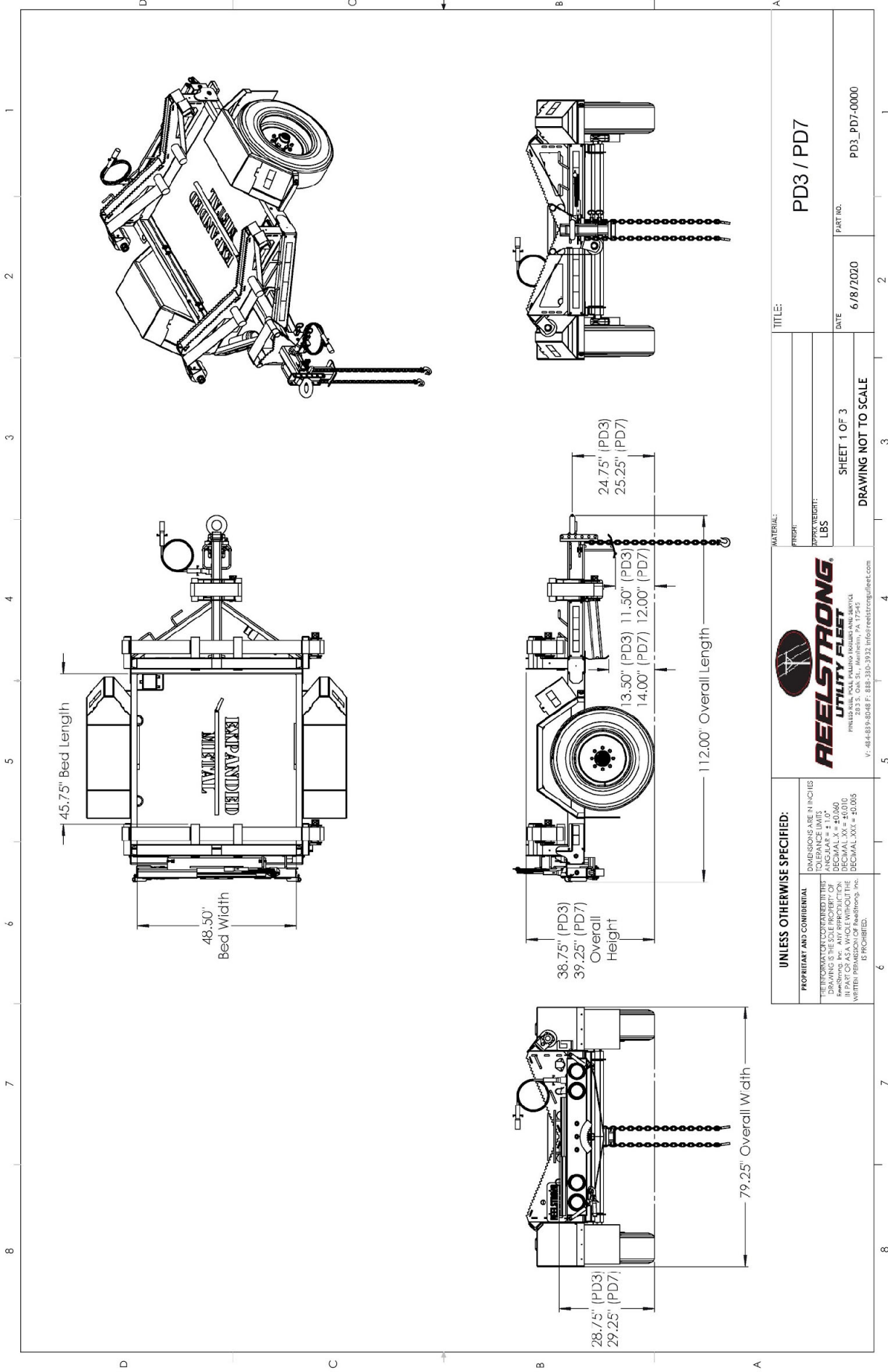
- Biodegradable Pretreat Acid Cleaning
(Superior to re-used sandblasting material that can impregnate metals with oil)
- Seams Caulked
- Rust Preventative 2-Part Epoxy Primer
- Standard Colors: Red, Black, White and CAT Yellow

LIGHT BAR

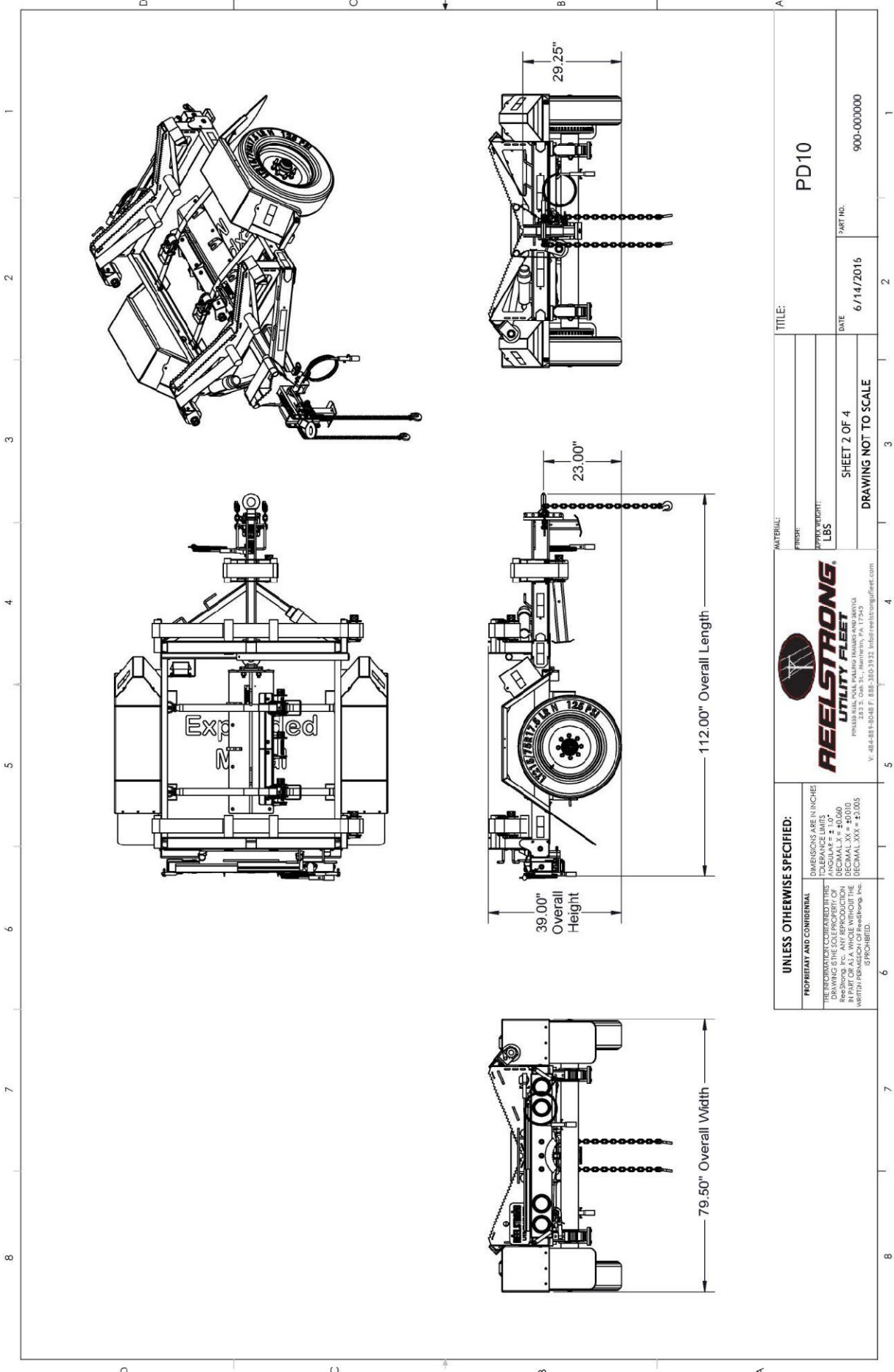
- All TIG Welded Aluminum
- Contains (4) Four 4" Stop/Turn / Tail Rubber Mounted Sealed Beam LED Lights
- (3) Three Center ID Marker Lights and (2) Two Side Marker Lights
- 7-Way Die Cast Connector
- 35' Standard Electric Cable Length with a 7-Way Connector Plug

OPTIONS

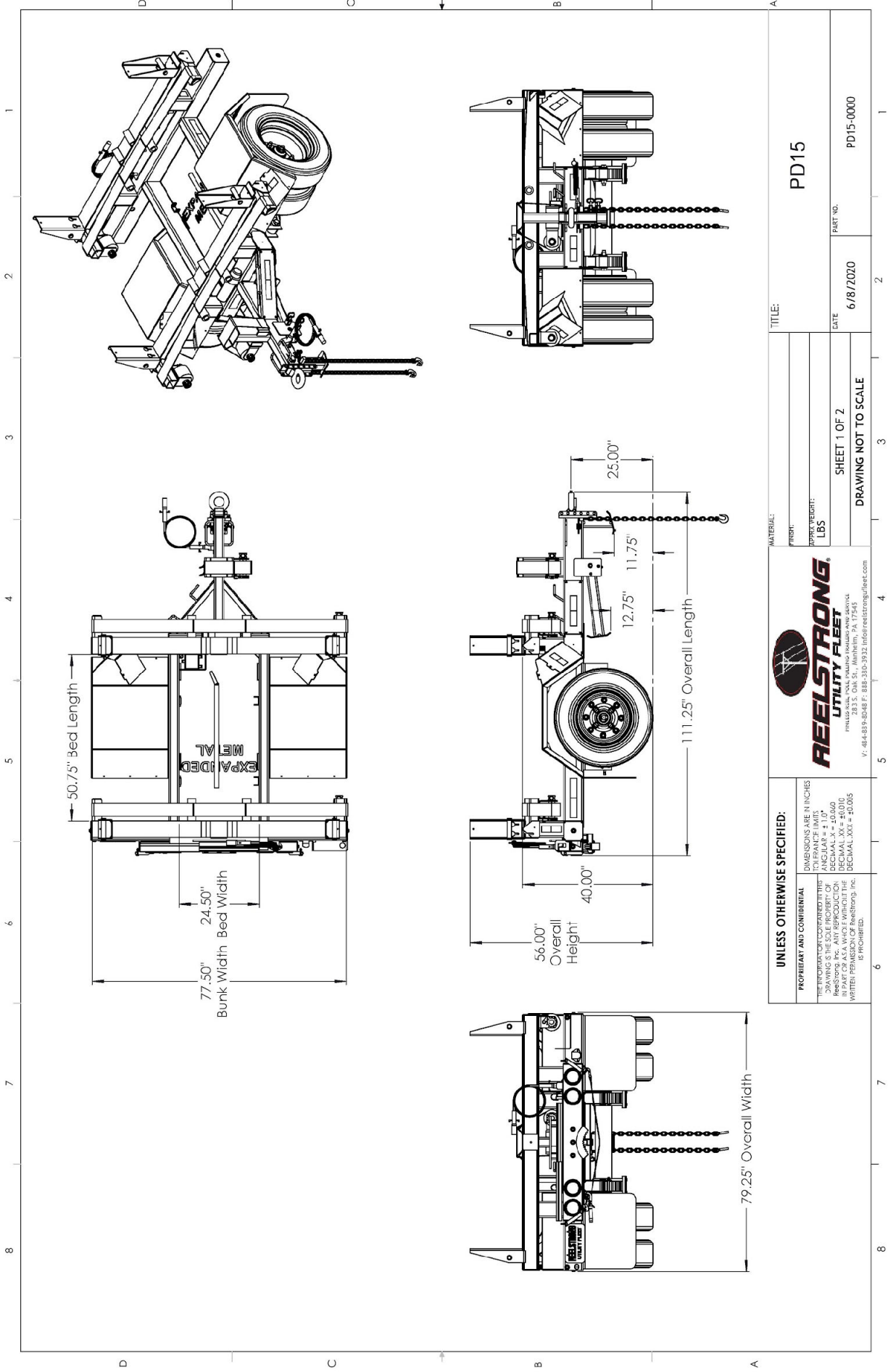
- 10-Year Galvanized Structural Warranty (2-Year Painted)
- Wiring Connections Soldered and Sealed w/ Heat Shrink Tubing
- Plug-and-Play Sealco Wiring Harness
- Wheel Chocks: Rubber or All Weather Galvanized Grip Strut
- Spare Tire and Mount
- Solar Charged Breakaway Kit
- Bolt-On Pole Muzzle
- Heavy-Duty Pole Muzzle
- Cradles: H-Beam w/ Non-Binding Stanchions
- Truck-Lite Lighting
- Lug Nut Indicators



UNLESS OTHERWISE SPECIFIED: DIMENSIONS ARE IN INCHES TOLERANCE LIMITS DECIMAL XX = ±0.010 FRACTIONAL XX = ±0.060 IN PART CO. AS A WHOLE WITHOUT THE WRITTEN PERMISSION OF Reelstrong, Inc. IS PROHIBITED.		REELSTRONG UTILITY FLANGE 203 S. Oak St., Wallingford, PA 17340 P: 484-839-8048 F: 888-330-3932 info@reelstrong.com	
PROPRIETARY AND CONFIDENTIAL THE INFORMATION CONTAINED IN THIS DRAWING IS THE SOLE PROPERTY OF REELSTRONG, INC. AND IS TO BE KEPT CONFIDENTIAL. NO PART OF THIS DRAWING IS TO BE REPRODUCED OR TRANSMITTED IN ANY FORM OR BY ANY MEANS, ELECTRONIC OR MECHANICAL, INCLUDING PHOTOCOPYING, RECORDING, OR BY ANY INFORMATION STORAGE AND RETRIEVAL SYSTEM, WITHOUT THE WRITTEN PERMISSION OF REELSTRONG, INC.		TITLE: PD3 / PD7	
MATERIAL: PROPERTIES: APPROX WEIGHT: LBS		DATE: 6/8/2020	
DATE: 6/8/2020		PART NO.: PD3_PD7-0000	
SHEET 1 OF 3		DRAWING NOT TO SCALE	



<p>UNLESS OTHERWISE SPECIFIED:</p> <p>THE INFORMATION CONTAINED IN THIS DRAWING IS THE SOLE PROPERTY OF REELSTRONG UTILITY FLEET, INC. IN PART OR AS A WHOLE WITHOUT THE WRITTEN PERMISSION OF Reelstrong, Inc. IS PROHIBITED.</p>		<p>REELSTRONG UTILITY FLEET</p> <p>REELSTRONG UTILITY FLEET 233 S. Oak St., Manheim, PA 17349 P: 484-881-8048 F: 888-380-3932 info@reelstrongfleet.com</p>	
<p>PROPRIETARY AND CONFIDENTIAL</p>		<p>TITLE: PD10</p>	
<p>DIMENSIONS ARE IN INCHES TOLERANCES ARE: FRACTIONS: ± 0.005 DECIMAL: ± 0.005 DECIMAL: XX" ± 0.010 DECIMAL: XXX" ± 0.005</p>		<p>MATERIAL: FMSR</p> <p>PROPERTY REPORT: LBS</p>	
<p>SHEET 2 OF 4</p>		<p>DATE: 6/14/2015</p>	
<p>DRAWING NOT TO SCALE</p>		<p>PART NO.: 900-000000</p>	



UNLESS OTHERWISE SPECIFIED:

PROPRIETARY AND CONFIDENTIAL

TITLE INFORMATION CONTAINED HEREIN IS THE PROPERTY OF REELSTRONG UTILITY FLEET. NO PART OF THIS DRAWING IS TO BE REPRODUCED OR TRANSMITTED IN ANY FORM OR BY ANY MEANS, ELECTRONIC OR MECHANICAL, INCLUDING PHOTOCOPYING, RECORDING, OR BY ANY INFORMATION STORAGE AND RETRIEVAL SYSTEM, WITHOUT THE WRITTEN PERMISSION OF Reelstrong, Inc. or its affiliates.

DIMENSIONS ARE IN INCHES
 ANGLES ARE IN DEGREES
 ANGULARS = ± 1.0°
 DECIMALS = ± 0.060
 DECIMALS = ± 0.010
 DECIMALS = ± 0.005



MATERIAL:
 FINISH:
 APPROX WEIGHT:
 LBS

TITLE: PD15

DATE: 6/8/2020

PART NO: PD15-0000

SHEET 1 OF 2
 DRAWING NOT TO SCALE