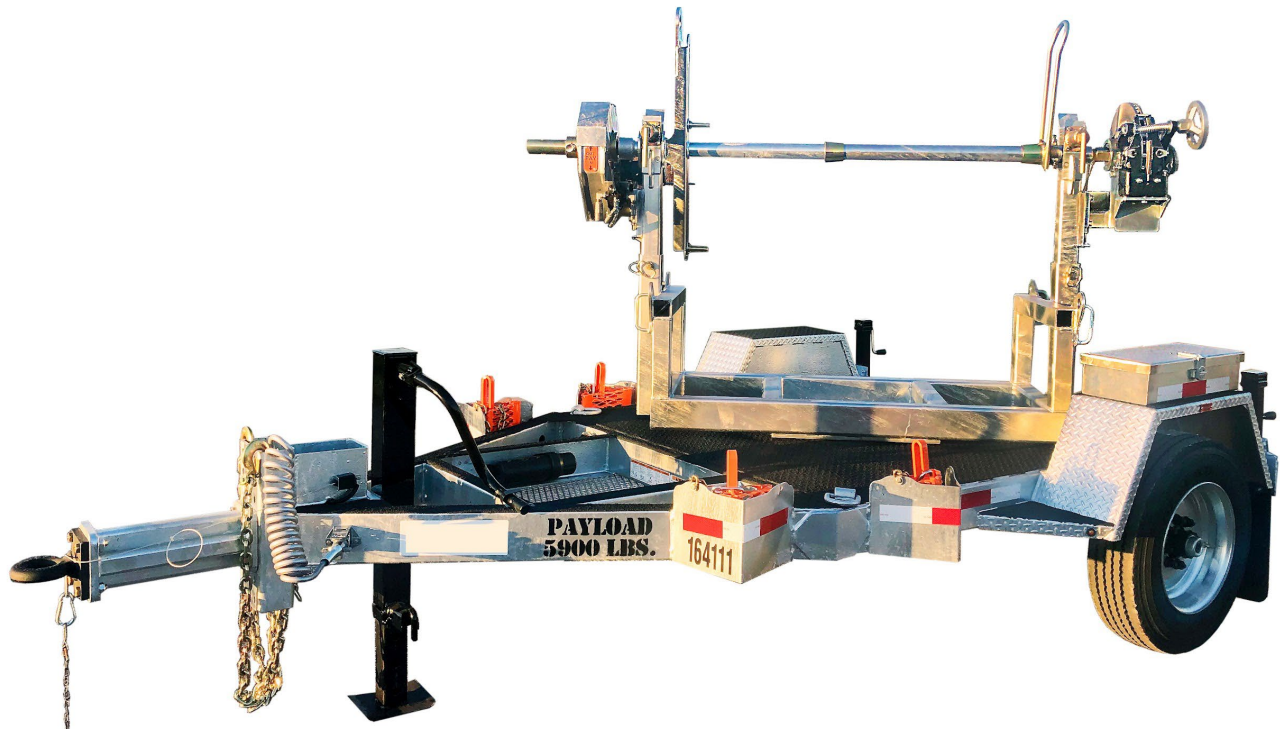


REELSTRONG®

UTILITY FLEET

PL-1RT POWERLOCK™ REEL TRAILER SPECS



LOWEST TOTAL COST OF OWNERSHIP (TCO) FROM:

- **LIFETIME WARRANTY PINLESS POWERLOCK™** Reel Bar Securement
- **INDUSTRY LEADING 20" OVERSIZED TURRET BEARING**
 - 250K Axial, 90K ft/lbs Moment Load Lockable on 3 Degree Intervals
- **INDUSTRY LEADING 24" OVERSIZED TURRET BEARING (PL-1RT10-DO)**
 - Lockable on 3 Degree Intervals
- **OPEN TOP, "NON ENCAPSULATED" NYLATRON BEARING SADDLE** (low-coefficient of friction). **OPEN TOP = LESS FRICTION/LOW MAINTENANCE and EASIER PAY-OUT.**
- **No Pins or Cotters to Secure Reel Bar** (*most critical safety point*)
- **Yellow Zinc Electro-Plated and Stainless Precision Machined Components**
- **PRACTICAL:** No Expensive, Unnecessary Bronze Components, yet we Don't Cut Corners and Provide Premium, Heavy Duty, Top-Quality Latches, Hardware, Fittings and Components.

BUILT FOR SAFETY. BUILT FOR SPEED. BUILT TO LAST.

CAPACITIES

- PL-1RT6: 9,200 lbs. GVWR @ 15% Tongue Weight
- PL-1RT8: 11,050 lbs. GVWR @ 15% Tongue Weight
- PL-1RT8-DO: 13,800 lbs. GVWR @ 15% Tongue Weight
- PL-1RT8-DO-EXO: 13,800 lbs. GVWR @ 15% Tongue Weight
- PL-1RT10-DO: 16,100 lbs. GVWR @ 15% Tongue Weight

AXLES

- PL-1RT6: 8K lbs. Torsion
- PL-1RT8: 10K lbs. Sprung
- PL-1RT8-DO: 12K lbs. Sprung
- PL-1RT8-DO-EXO: 12K lbs. Sprung
- PL-1RT10-DO: Tandem 7K lbs. Torsion

WHEELS

- PL-1RT6: (2) 17.5 x 6.75 HC / 8 on 6.5 BC w/ 0.19 Inset
- PL-1RT8: (2) 17.5 x 6.75 HC / 8 on 6.5 BC w/ 0.19 Inset
- PL-1RT8-DO: (2) 17.5 x 6.75 HC / 8 on 6.5 BC w/ 0.19 Inset
- PL-1RT8-DO-EXO: (2) 17.5 x 6.75 HC / 8 on 6.5 BC w/ 0.19 Inset
- PL-1RT10-DO: (4) 16 x 6K / 8 on 6.5 BC w/ Zeraset

TIRES

- PL-1RT6: (2) ST-215/75R17.5 LR-H Tires
- PL-1RT8: (2) ST-215/75R17.5 LR-H Tires
- PL-1RT8-DO: (2) ST-235/75R17.5 LR-J Tires
- PL-1RT8-DO-EXO: (2) ST-235/75R17.5 LR-J Tires
- PL-1RT10-DO: (4) ST-235/85R16 LR-E Tires

BRAKES

- PL-1RT6: 12.25" x 3.38" Electric w/ Safety Breakaway Kit
- PL-1RT8: 12.25" x 3.38" Electric w/ Safety Breakaway Kit
- PL-1RT8-DO: 12.25" x 5.00" Electric w/ Safety Breakaway Kit
- PL-1RT8-DO-EXO: 12.25" x 5.00" Electric w/ Safety Breakaway Kit
- PL-1RT10-DO: 12.00" x 2.00" Electric w/ Safety Breakaway Kit

PAYLOAD: ALL FINAL PAYLOADS BASED ON CHOSEN MODEL AND OPTIONS

REEL WEIGHT (PAYLOAD)

- PL-1RT6: 6,200 lbs. Approx. (payload lowers as options chosen)
- PL-1RT8: 8,000 lbs. Approx. (payload lowers as options chosen)
- PL-1RT8-DO: 8,000 lbs. Approx. (payload lowers as options chosen)
- PL-1RT8-DO-EXO: 8,000 lbs. Approx. (payload lowers as options chosen)
- PL-1RT10-DO: 10,000 lbs. Approx. (payload lowers as options chosen)

(ADDITIONAL WEIGHT OF OPTIONS REDUCES PAYLOAD)

REEL DIAMETER: Positions from 72", 84" to 96"

REEL WIDTH:

- PL-1RT6: 54" Max
- PL-1RT8: 54" Max
- PL-1RT8-DO: 60" Max
- PL-1RT8-DO-EXO: 60" Max
- PL-1RT10-DO: 60" Max

REEL BAR DIA: 2.5"

REEL BAR DIA: 3.00" (PL-1RT10-DO)

LENGTH:

- PL-1RT6: 151" Approx.
- PL-1RT8: 151" Approx.
- PL-1RT8-DO: 164.50" Approx.
- PL-1RT8-DO-EXO: 160.25" Approx.
- PL-1RT10-DO: 195.66" Approx.

WIDTH:

- PL-1RT6: 96" Approx.
- PL-1RT8: 96" Approx.
- PL-1RT8-DO: 101.75" Approx.
- PL-1RT8-DO-EXO: 101" Approx.
- PL-1RT8-DO: 101.00" Approx.

CURB WEIGHT:

- PL-1RT6: 3,000 lbs. Approx.
- PL-1RT8: 3,050 lbs. Approx.
- PL-1RT8-DO: 4,100 lbs. Approx.
- PL-1RT8-DO-EXO: 4,600 lbs. Approx.
- PL-1RT10-DO: 5,200 lbs. Approx.

Trailer Weight will Vary with Options & Finishes Chosen.

STANDARD FEATURES

- **PINLESS POWERLOCK™ LIFETIME WARRANTY VIRTUALLY ZERO MAINTENANCE** Yellow Zinc Electroplated
- **INDUSTRY LEADING 20" OVERSIZED TURRET BEARING w/ 250K Axial, 90K ft/lbs Moment Load Lockable on 3 Deg. Intervals**
- **OPEN TOP, "NON ENCAPSULATED" NYLATRON BEARING SADDLE** (low-coefficient of friction). OPEN TOP = LESS FRICTION/LOW MAINTENANCE and EASIER PAY-OUT. (Haven't Replaced a Saddle in 14 Years)
- Oil Bath Hubs (Greaseable Option All)

STANDARD FEATURES (cont.)

- Electric Brakes
- Wheel Chock Holders
- Removable Turrets to Turn Trailer into Flatbed, if Needed.
- Three (3) POINT STEPS AND HANDHOLDS STANDARD**

STANDARD TRAILER BODY

- Heavy Duty 6" X 3" X ¼" Frame
- 6-Position Adjustable Hitch
- ¾" X 36" GR70 Yellow Zinc Safety Chains with Hooks
- 12,000 lbs. Static Front Jack w/ Spring Return
- Ground Lug: Copper Alloy Star Washer Bolted to Frame (Welded Optional)
- Fenders: ½" Fabricated Diamond Plate
- (2) Rear 8,000 lbs. Static Stabilizer Jacks

WIRING

- DOT / ICC-- FMVSS / CMVSS Approved LED ULTRA- HIGH VISIBILITY 180 DEGREE BULLET Marker and Clearance Lights
- LED Sealed Beam Rubber Mounted Stop, Turn, Tail and Marker Lights
- Breakaway Kit with Absorbed Glass Mat (AGM) Battery
- 100% Sealed Heat-Shrunked Wiring Connections w/ Full Loom
- FULLY PROTECTED 7 or 6 Way Female Plug acts as Junction Box Recessed in FRAME RAIL. No Easily Damaged Plastic Junction Boxes

PAINT

- Biodegradable Pretreat Acid Cleaning (Superior to re-used sandblasting material that can impregnate metals with oil)
- Seams Caulked
- Rust Preventative 2-Part Epoxy Primer
- Two-Part Polyurethane Topcoats (2 topcoats)
- Standard Colors: White and CAT Yellow (Custom Available)
- Ten (10) Year Galvanized Structural Warranty (2-Year Painted)

OPTIONS

- 13 HP HONDA Engine Hydraulic Power Pack Comes STANDARD w/ ENGINE COVER, 15 Gallon Reservoir, Replaceable Oil Filter, Pressure Gauge and Solar Fade Resistant Plastic Control Placard. (Electric Start Optional)
- 3,300 ft/lbs Torque Hydraulic Take-up Retriever. (Motor Spooled w/ Reel Brake ILO Cross-Over Relief Valve for Smooth Instant Reel Stoppage)
- 2-7/16" Universal Adapter for Capstan and Power Reel Attachments
- Hydraulic Hose Rotary Swivel Union (*manages & eliminates loose hydraulic hoses*)
- 7 Inch General Purpose Capstan
- Collapsible Power Reel
- 16" Bronze Alloy Ventilated Reel Brake w/ Ventilated Guard

OPTIONS (cont.)

- 16" Long 6-Bolt Hitch Extension (w/ 52" Safety Chains and Breakaway Cable Extension)
- 3" Lunette Eye
- Rotating Arbor Ground
- All Stainless Steel Fasteners (1/2" and under)
- Anti-Skid/Anti-Glare Sand Paint on all Walking Surfaces
- Various Trailer Light Plugs (Customer Choice)
- Aluminum or Steel Toolbox
- Air Brakes w/ ABS
- Wiring Connections Soldered and Sealed w/ Heat Shrink Tubing
- Plug-and-Play Sealco Wiring Harness
- Wheel Chocks: Rubber or All Weather Galvanized Grip Strut
- Spare Tire and Mount
- Solar Charged Breakaway Kit
- Strobe Warning Lights
- Hydraulic Front Jack
- Hydraulic Rear and Intermediate Outriggers
- Telescoping Rear and Intermediate Outriggers
- Truck-Lite Lighting
- Lug Nut Indicators

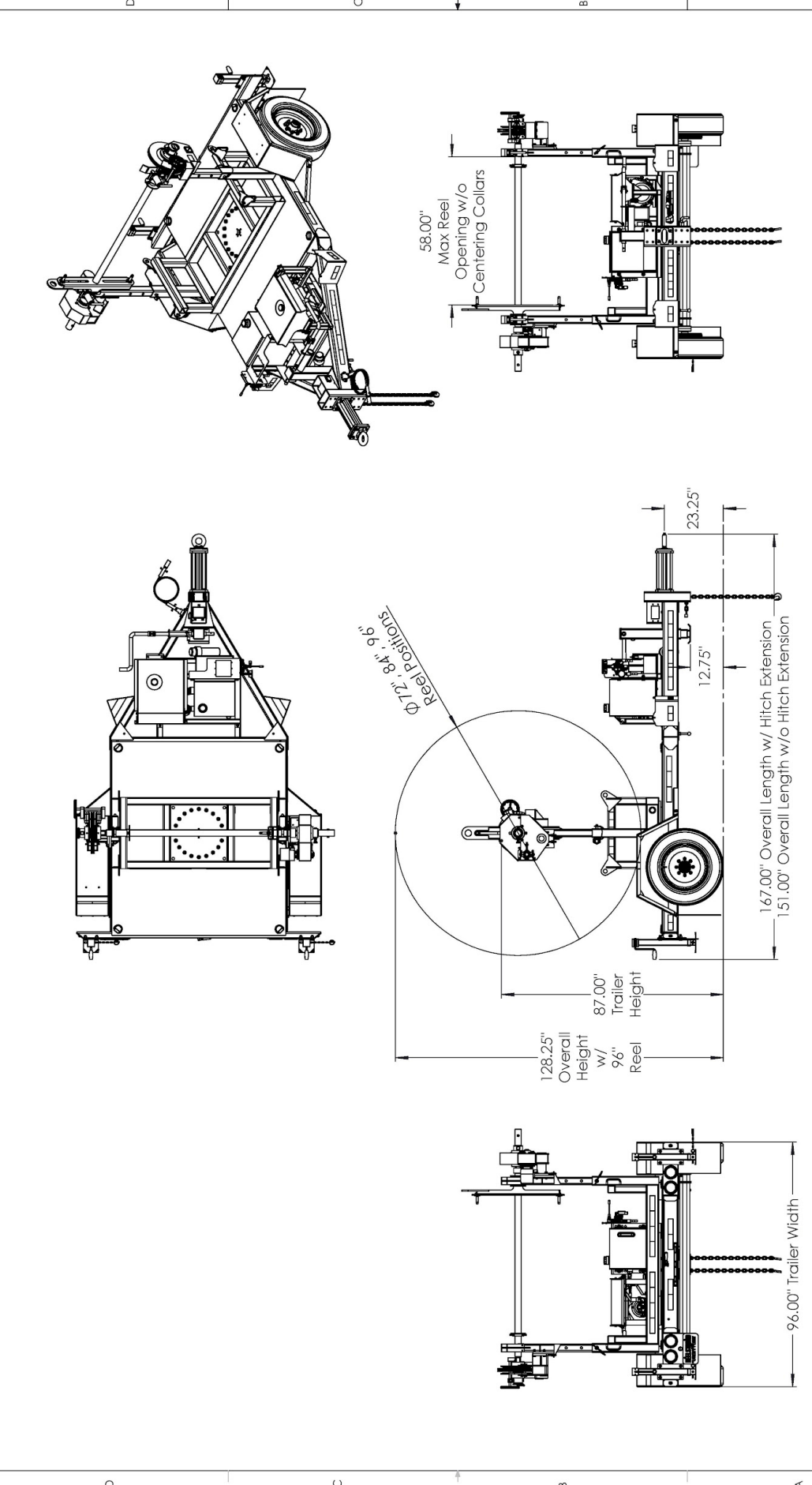
OPTIONAL PREMIUM ROLLER PACKAGE

- OVD Fairlead Rollers (One "1" Per Turret)
- URD Fairlead Rollers (Two "2" Per Turret)
- OVD/URD Cable Gathering Windows
- URD Arching/Traversing Fairlead

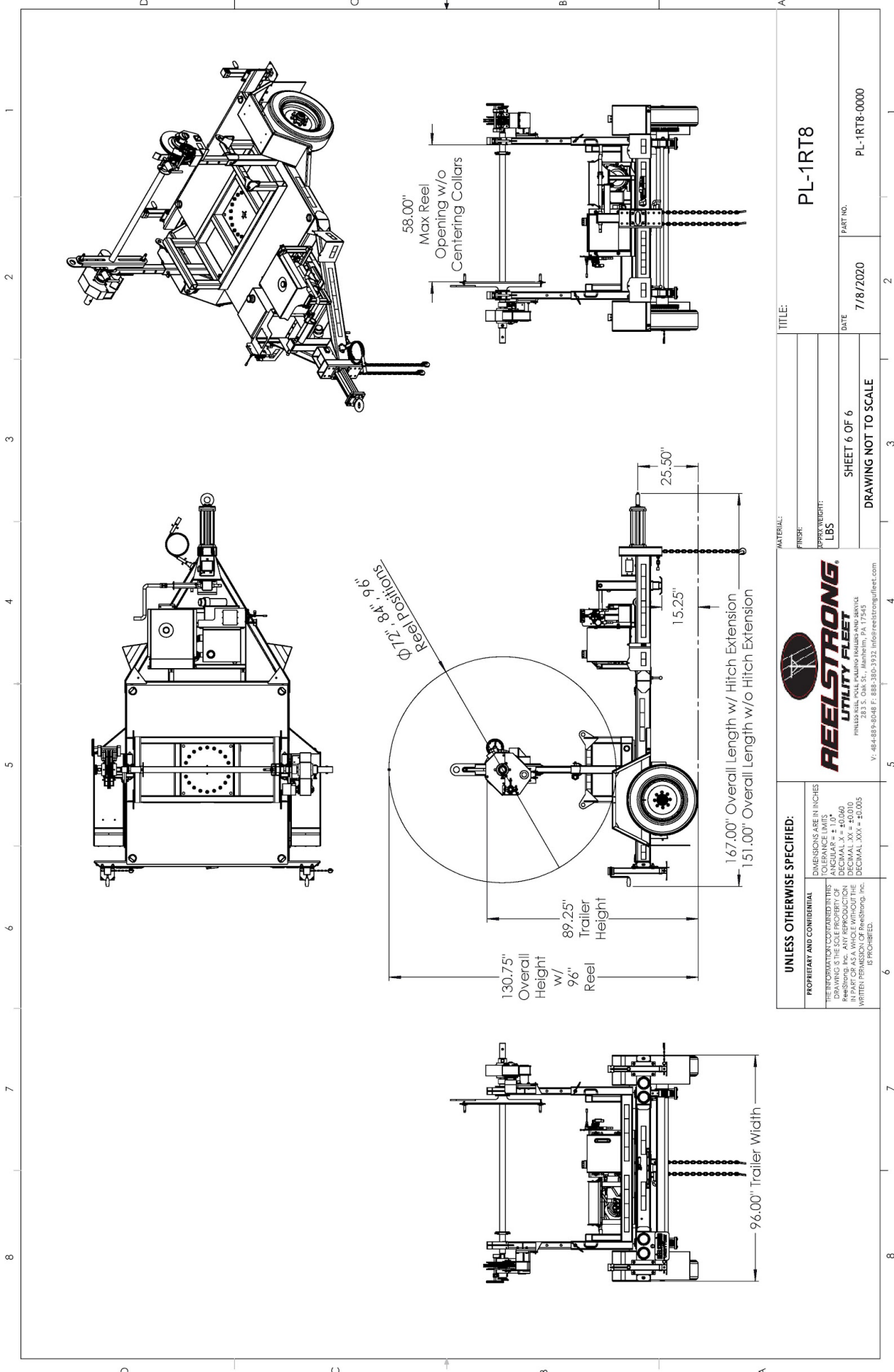
OPTIONAL ECONOMY ROLLER PACKAGE

- OVD Fairlead Rollers (One "1" Per Turret)
- URD Fairlead Rollers (Two "2" Per Turret)
- OVD/URD Cable Gathering Windows
- URD Cable Gathering Window

1 2 3 4 5 6 7 8



<p>UNLESS OTHERWISE SPECIFIED:</p> <p>PROPRIETARY AND CONFIDENTIAL</p> <p>THE INFORMATION CONTAINED HEREIN IS THE SOLE PROPERTY OF REELSTRONG UTILITY FLEET. IT IS TO BE USED ONLY FOR THE PROJECT AND IN PART OR AS A WHOLE WITHOUT THE WRITTEN PERMISSION OF Reelstrong, Inc. IS PROHIBITED.</p>		<p>DIMENSIONS ARE IN INCHES</p> <p>TOLERANCE LIMITS</p> <p>DECIMAL .XX = ±0.005</p> <p>DECIMAL .XX = ±0.010</p> <p>DECIMAL .XXX = ±0.005</p>	
<p>REELSTRONG UTILITY FLEET</p> <p>283 S. Oak St., Manheim, PA 17545</p> <p>V: 484-889-8048 F: 888-380-3932 info@reelstrongfleet.com</p>		<p>TITLE: PL-1RT6</p>	
<p>MATERIAL: _____</p> <p>FINISH: _____</p> <p>APPROX WEIGHT: LBS</p>		<p>DATE: 7/8/2020</p> <p>PART NO: PL-1RT6-0000</p>	
<p>SHEET 6 OF 6</p> <p>DRAWING NOT TO SCALE</p>		<p>1 2 3 4 5 6 7 8</p>	



TITLE: PL-1RT8	
MATERIAL:	
FINISH:	
APPROX WEIGHT:	LBS
DATE:	7/8/2020
PART NO. PL-1RT8-0000	

SHEET 6 OF 6	
DRAWING NOT TO SCALE	

REELSTRONG UTILITY FLEET

283 S. Oak St., Manheim, PA 17345
 P: 64-889-8048 F: 888-380-3932 info@reelstrongfleet.com

UNLESS OTHERWISE SPECIFIED:

PROPRIETARY AND CONFIDENTIAL

THE INFORMATION CONTAINED IN THIS DRAWING IS THE SOLE PROPERTY OF REELSTRONG UTILITY FLEET. IT IS TO BE USED IN PART OR AS A WHOLE WITHOUT THE WRITTEN PERMISSION OF Reelstrong, Inc. IS PROHIBITED.

DIMENSIONS ARE IN INCHES

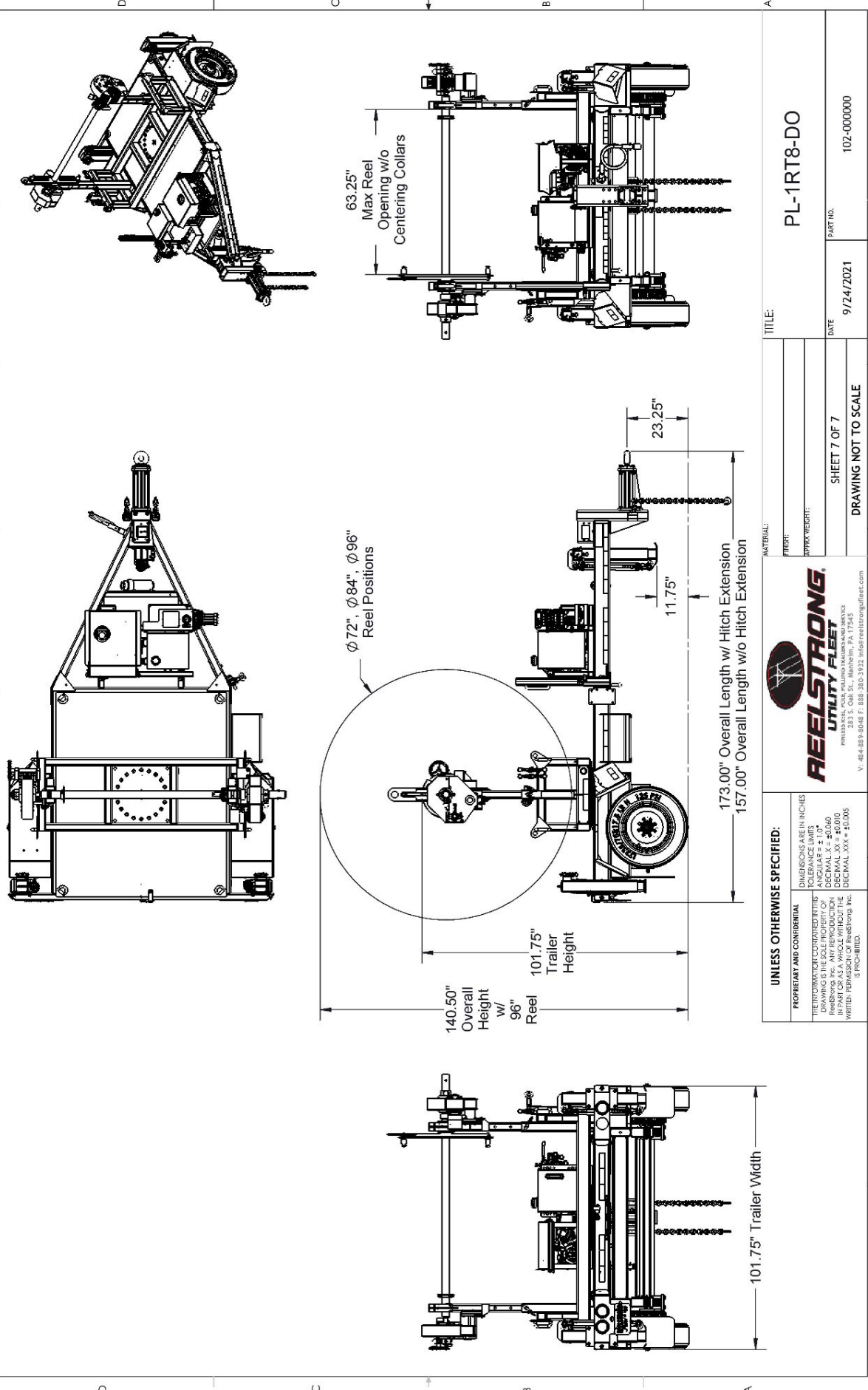
TOLERANCE LIMITS

DECIMAL .XX = ±0.005

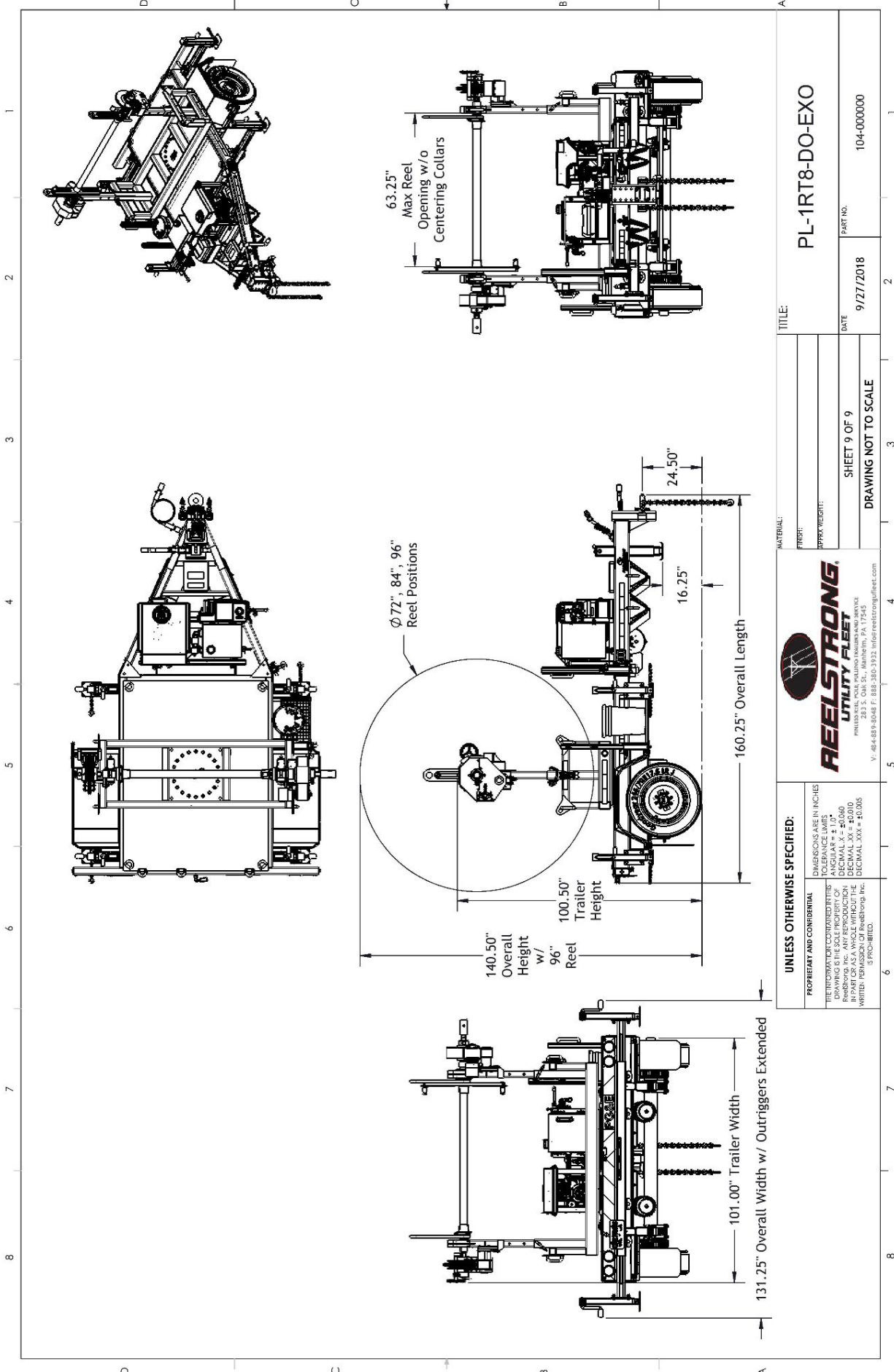
DECIMAL .XX = ±0.010

DECIMAL .XXX = ±0.005

1 2 3 4 5 6 7 8



TITLE: PL-1RT8-DO	
PART NO. 102-000000	
DATE: 9/24/2021	SHEET 7 OF 7
DRAWING NOT TO SCALE	
	
<small>UNLESS OTHERWISE SPECIFIED: DIMENSIONS ARE IN INCHES TOLERANCE LIMITS DECIMAL XX = ±0.060 DECIMAL XX = ±0.010 DECIMAL XXX = ±0.005 IS PROHIBITED.</small>	
<small>PROPRIETARY AND CONFIDENTIAL THE INFORMATION CONTAINED HEREIN IS THE SOLE PROPERTY OF REELSTRONG UTILITY FLEET INC. IN PART OR AS A WHOLE WITHOUT THE WRITTEN PERMISSION OF Reelstrong Inc. IS PROHIBITED.</small>	
<small>MATERIAL: FRUIT: APPROX REPORT: 233 S. Oak St., Mahanoh, PA 17545 V: 664-889-8048 F: 888-380-3932 info@reelstrongfleet.com</small>	



TITLE: PL-1RT8-DO-EXO

MATERIAL: _____

FRST: _____

APPROX REPORT: _____

DATE: 9/27/2018

PART NO: 104-000000

SHEET 9 OF 9

DRAWING NOT TO SCALE



UNLESS OTHERWISE SPECIFIED:
 PROPRIETARY AND CONFIDENTIAL
 DIMENSIONS ARE IN INCHES
 TOLERANCE LIMITS
 THE INFORMATION CONTAINED HEREIN
 DRAWING IS THE SOLE PROPERTY OF
 REELSTRONG UTILITY FLEET
 IN PART OR AS A WHOLE WITHOUT THE
 WRITTEN PERMISSION OF ReelStrong Inc.
 IS PROHIBITED.

DECIMAL .XX = ±0.010
 DECIMAL .XXX = ±0.005

131.25" Overall Width w/ Outriggers Extended

101.00" Trailer Width

160.25" Overall Length

100.50" Trailer Height

96" Reel

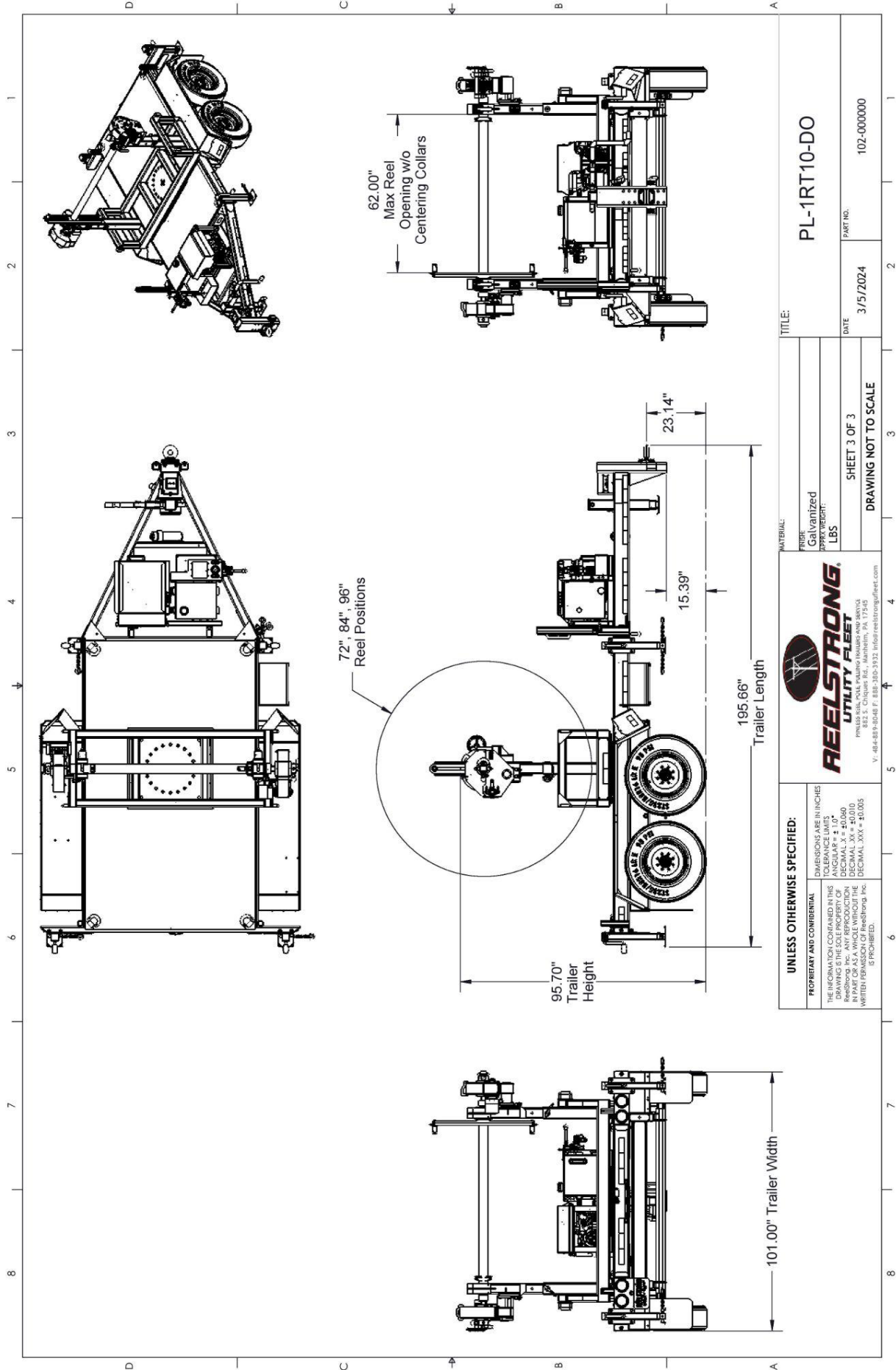
140.50" Overall Height w/ Reel

Ø 72", 84", 96" Reel Positions

63.25" Max Reel Opening w/o Centering Collars

24.50"

16.25"



UNLESS OTHERWISE SPECIFIED:
 PROPRIETARY AND CONFIDENTIAL
 DIMENSIONS ARE IN INCHES
 TOLERANCE LIMITS:
 THE INFORMATION CONTAINED IN THIS DRAWING IS THE SOLE PROPERTY OF REELSTRONG, INC. ALL RIGHTS RESERVED. IN PART OR AS A WHOLE WITHOUT THE WRITTEN PERMISSION OF ReelStrong, Inc. IS PROHIBITED.
 DECIMAL .XX = ±0.010
 DECIMAL .XXX = ±0.005



MATERIAL:
 FINISH: Galvanized
 WEIGHT: LBS
 SHEET 3 OF 3
 DRAWING NOT TO SCALE

TITLE: PL-1RT10-DO
 DATE: 3/5/2024
 PART NO.: 102-000000

8 7 6 5 4 3 2 1

8 7 6 5 4 3 2 1

D C B A

D C B A