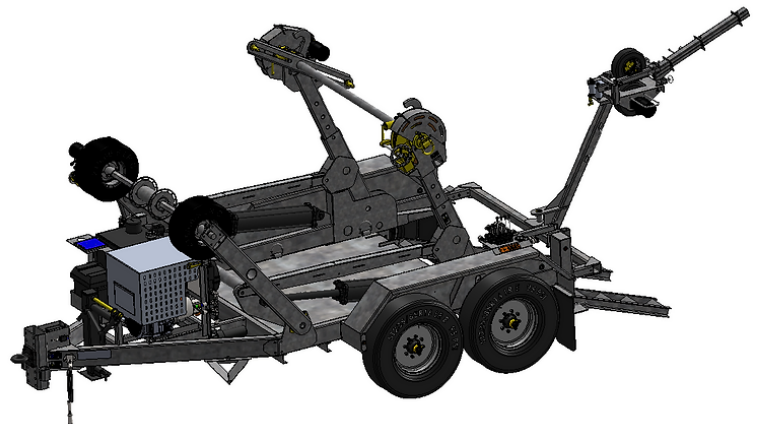
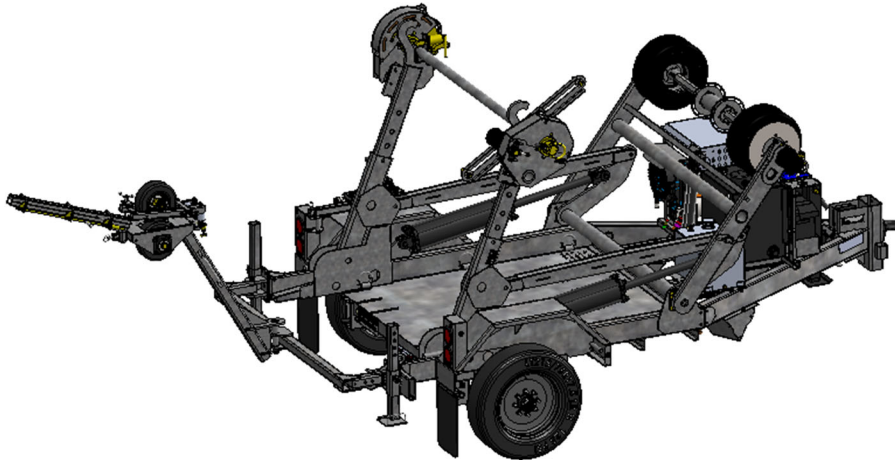


REELSTRONG[®]

UTILITY FLEET

ALIO PINLESS POWERLOCK™ ALL-IN-ONE TRAILER SPECS



LOWEST TOTAL COST OF OWNERSHIP (TCO) From:

- **LIFETIME WARRANTY PINLESS POWERLOCK™** Reel Bar Securement
- No Pins or Cotters to Secure Reel Bar (*most critical safety point*).
- Fastest, Safest Loading, Unloading and Deployment Reduces Labor .
- Yellow Zinc Electro-Plated and Stainless Precision Machined Components
- **PRACTICAL:** No Expensive, Unnecessary Bronze Components, yet we Don't Cut Corners and Provide Premium, Heavy Duty, Top-Quality Latches, Hardware, Fittings and Components.

BUILT FOR SAFETY. BUILT FOR SPEED. BUILT TO LAST.

CAPACITIES:

- ALIO-6: 11,050 lbs. GVWR @ 15% Tongue Weight
- ALIO-9: 13,800 lbs. GVWR @ 15% Tongue Weight

AXLES:

- ALIO-6: Single 10K lbs. Sprung
- ALIO-9: Tandem 6K lbs. Torsion

WHEELS:

- ALIO-6: (2) 17.5 x 6.75 HC / 8 on 6.5 BC w/ 0.19 Inset
- ALIO-9: (4) 16 x 6K / 8 on 6.5 BC w/ Zeraset

TIRES:

- ALIO-6: (2) 215/75R17.5 LR-H Tires
- ALIO-9: (4) ST235/80R16 LR-E Tires

BRAKES:

- ALIO-6: 12.25" x 3.38" Electric w/ Safety Breakaway Kit
- ALIO-9: 12" x 2" Electric w/ Safety Breakaway Kit

REEL WEIGHT (PAYLOAD):

- ALIO-6: 6,000 lbs. Approx.
- ALIO-9: 9,000 lbs. Approx.

PAYLOAD: ALL FINAL PAYLOADS BASED ON CHOSEN MODEL AND OPTIONS

REEL DIAMETER: Positions for 84", 96", 108", and 120"

REEL WIDTH: 60" Max

REEL SHAFT DIAMETER: 2.50"

OVERALL LENGTH:

- ALIO-6: 170.25"
- ALIO-9: 177.00"

OVERALL WIDTH:

- ALIO-6: 99"
- ALIO-9: 98"

OVERALL WEIGHT:

- ALIO-6: 4,400 lbs. Approx.
- ALIO-9: 4,700 lbs. Approx.

Actual Trailer Weight will Vary with Options & Finishes Chosen.

STANDARD FEATURES

- **LIFETIME WARRANTY PINLESS AUTOLOCK™**
- Oil Bath Hubs (Greaseable Option All)
- Electric Brakes
- Wheel Chock Holders
- Dexter Axles
- OPEN TOP, "NON ENCAPSULATED" NYLATRON BEARING SADDLE (low-coefficient of friction). OPEN TOP = LESS FRICTION/LOW MAINTENANCE and EASIER PAY-OUT. (Haven't Replaced a Saddle due to Wear in 13 Years)
- Wheel Chock Holders
- 6D-Rings Front, Center and Rear for Cargo / Transformers (CLD14)
- 20 HP HONDA Electric Start Engine Hydraulic Power Pack Comes STANDARD w/ ENGINE COVER, 25 Gallon Reservoir, Replaceable Oil Filter, Pressure Gauge and Solar Fade Resistant Plastic Control Placard.
- Two-Wheel Rim-Drive Take-up Retriever w/ 15" Overspin Brake, and Hex Drive Winch

STANDARD TRAILER BODY

- 6" X 3" X ¼" Frame
- 6-Position Adjustable Hitch
- ¾" X 36" GR70 Yellow Zinc Safety Chains with Hooks
- Standard Cargo Area
- 12,000 lbs. Static Front Jack w/ Spring Return
- Ground Lug: Copper Alloy Star Washer Bolted to Frame (Welded Optional)
- Fenders: ½" Fabricated Diamond Plate
- Quick Deploy Outriggers (no loose pins)
- DOT Reflective Conspicuity Tape

LIGHTS/WIRING

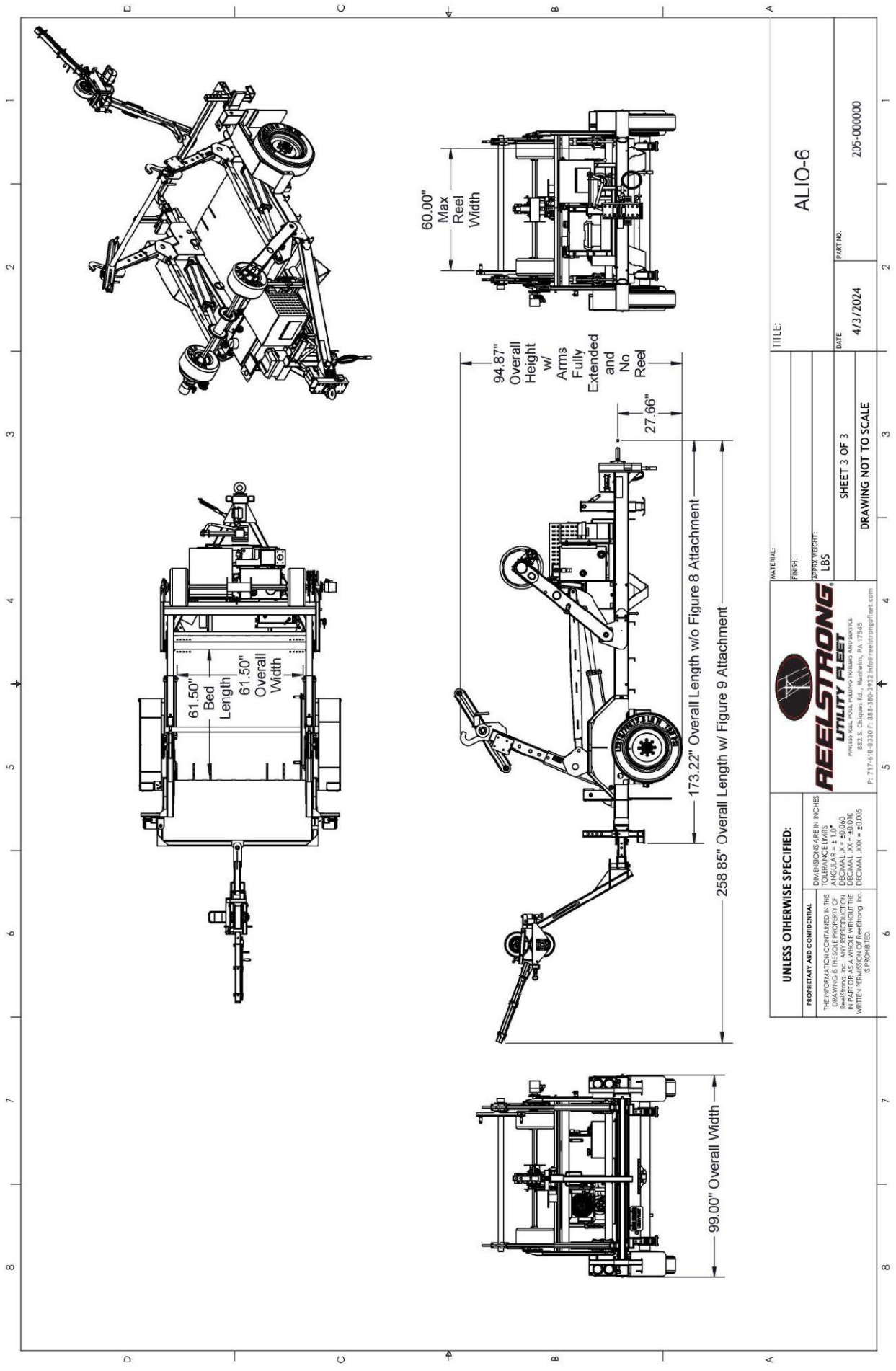
- DOT / ICC-- FMVSS / CMVSS Approved LED ULTRA- HIGH VISIBILITY 180 DEGREE BULLET Marker and Clearance Lights
- LED Sealed Beam Rubber Mounted Stop, Turn, Tail and Marker Lights
- 100% Sealed Heat-Shrunked Wiring Connections w/ Full Loom
- Breakaway Kit with Absorbed Glass Mat (AGM) Battery
- FULLY PROTECTED 7 or 6 Way Female Plug acts as Junction Box Recessed in FRAME RAIL. No Easily Damaged Plastic Junction Boxes!

PAINT

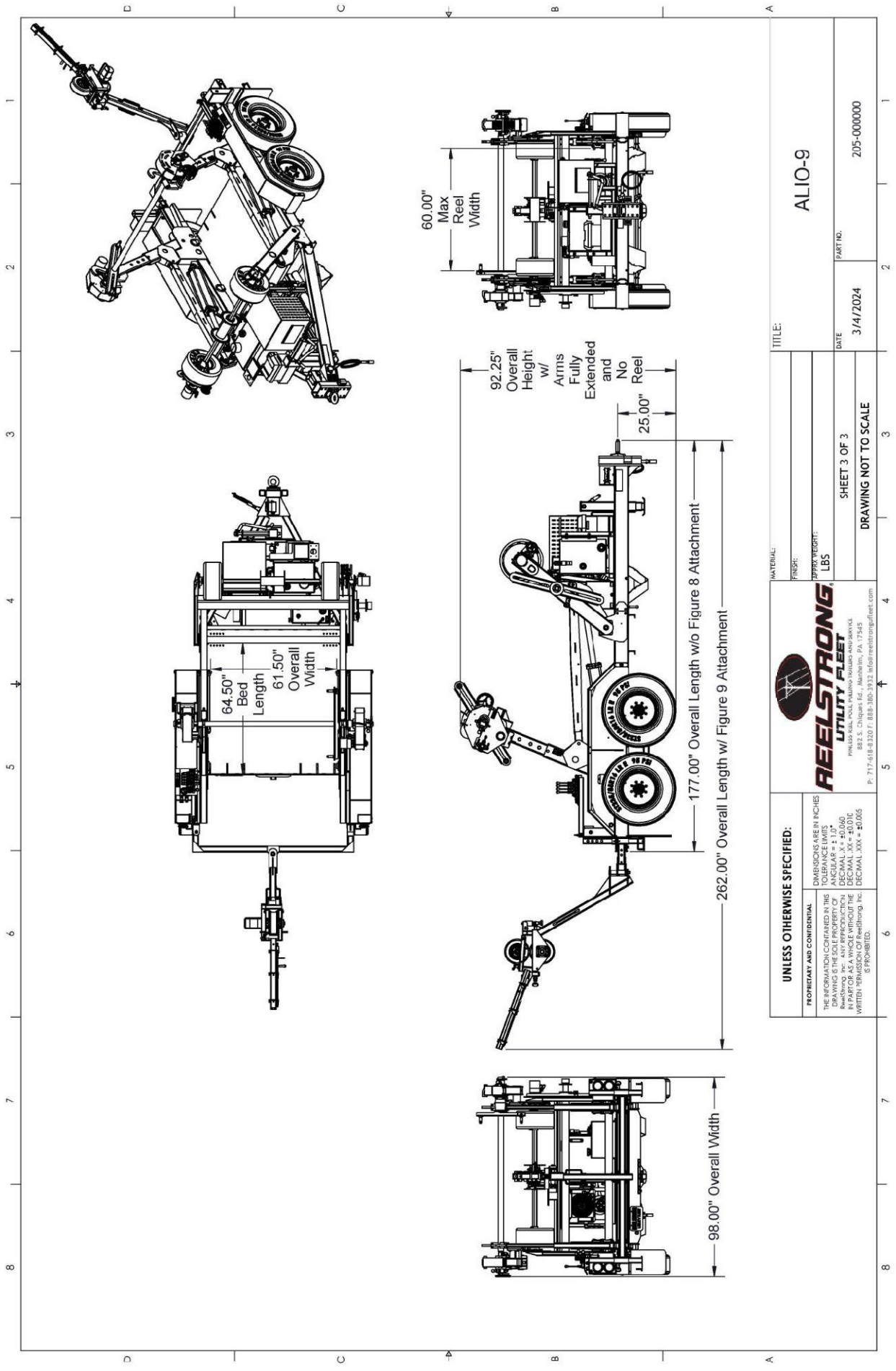
- Intense Metal pH Acid Surface Prep (Superior to sandblasting that can infuse metal w/ oil)
- Seams Caulked
- Rust Preventative 2-Part Epoxy Primer
- Two-Part Polyurethane Topcoats (2 topcoats)
- Standard Colors: White and CAT Yellow (Custom Available)

OPTIONS

- Ten (10) Year Galvanized Structural Warranty (2-Year Painted)
- 16" Bronze Alloy TRU-STOP Ventilated Reel Brake
- 3,300 ft/lbs Torque Hydraulic Take-up Retriever. (Motor Spooled w/ Reel Brake ILO Cross-Over Relief Valve for Smooth Instant Reel Stoppage)
- 2-7/16" Universal Adapter for Capstan, Collapsible Reel or Slip-Clutch Fiber-Optic Reels
- 7 Inch General Purpose Capstan
- Collapsible Power Reel
- Slip-Clutch Fiber-Optic Pulling Capstan
- Fiber-Optic Figure 8 Attachment
- Cable Rewind Leveler
- Rotating Arbor Ground
- Dumpster
- Utility Ramps
- Aluminum or Stainless Toolbox
- Air Brakes w/ ABS
- 16" Long 6-Bolt Hitch Extension (w/ 52" Safety Chains and Breakaway Cable Extension)
- 3" Lunette Eye
- Wiring Connections Soldered and Sealed w/ Heat Shrink Tubing
- Plug-and-Play Sealco Wiring Harness
- **Wheel Chocks:** Rubber or All Weather Galvanized Grip Strut
- Spare Tire and Mount
- Solar Charged Breakaway Kit
- 12" Caster Wheel for Tongue Jack
- Strobe Warning Lights
- All Stainless Steel Fasteners (1/2" and under)
- Auxiliary Hydraulic Quick-Connect Ports
- Various Trailer Light Plugs (Customer Choice)
- Custom Paint
- Custom Specification
- Truck-Lite Lighting
- Lug Nut Indicators



UNLESS OTHERWISE SPECIFIED: DIMENSIONS ARE IN INCHES TOLERANCE LIMITS ANGULAR = ± 1.0° LINEAR = ± 0.010" DECIMAL XX = ± 0.010" DECIMAL XXX = ± 0.005" IS PROHIBITED.		REELSTRONG UTILITY FLEET 882 S. Chiquas Rd., Manheim, PA 17345 P: 717-618-8300 F: 888-380-3932 info@reelstrongfleet.com	
PROPRIETARY AND CONFIDENTIAL THE INFORMATION CONTAINED IN THIS DRAWING IS THE SOLE PROPERTY OF REELSTRONG, INC. NO PART OF THIS DRAWING IS TO BE REPRODUCED OR TRANSMITTED IN ANY FORM OR BY ANY MEANS, WITHOUT THE WRITTEN PERMISSION OF REELSTRONG, INC. IS PROHIBITED.		TITLE: ALIO-6 SHEET 3 OF 3 DRAWING NOT TO SCALE	
MATERIAL: FINISH: APPROX WEIGHT: LBS		DATE: 4/3/2024 PART NO: 205-000000	



UNLESS OTHERWISE SPECIFIED: <small> DIMENSIONS ARE IN INCHES TOLERANCE LIMITS ANGULAR = ± 1.0° LINEAR = ± 0.015" DECIMAL XX = ± 0.010" DECIMAL XXX = ± 0.005" WRITTEN PERMISSION OF ReelStrong, Inc. IS PROHIBITED. </small>		REELSTRONG UTILITY FLEET <small> 882 S. Chiquas Ed., Manheim, PA, 17345 P: 717-618-8320 F: 888-380-3932 info@reelstrongfleet.com </small>	
PROPRIETARY AND CONFIDENTIAL <small> THE INFORMATION CONTAINED IN THIS DRAWING IS THE SOLE PROPERTY OF REELSTRONG, INC. IT IS TO BE USED ONLY FOR THE PART OR ASSEMBLY IDENTIFIED BY THIS DRAWING. ANY REPRODUCTION OR TRANSMISSION OF THIS DRAWING WITHOUT THE WRITTEN PERMISSION OF REELSTRONG, INC. IS PROHIBITED. </small>		ALIO-9	
MATERIAL: FINISH: APPROX WEIGHT: LBS		DATE: 3/14/2024	
SHEET 3 OF 3		PART NO.: 205-000000	
DRAWING NOT TO SCALE			