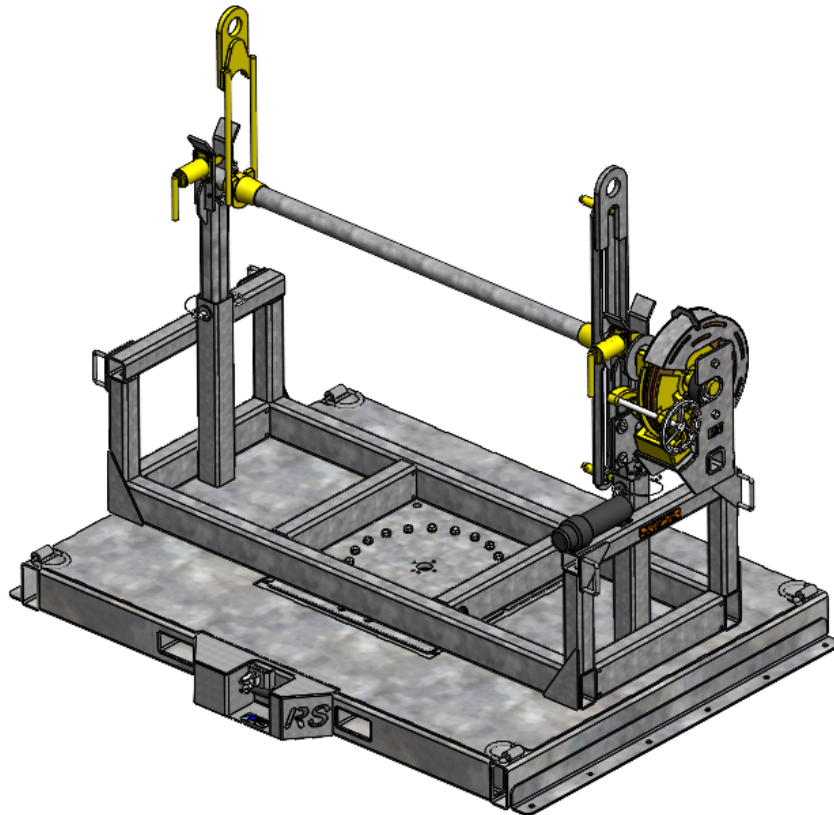


# **REELSTRONG®**

## **UTILITY FLEET**

### **TS8 POWERLOCK™ SINGLE FLATBED TURRET SPECS**



#### **LOW EST TOTAL COST OF OWNERSHIP (TCO) FROM :**

- **LIFETIME WARRANTY PINLESS POWERLOCK™** Reel Bar Securement
- **INDUSTRY LEADING 20" OVERSIZED TURRET BEARING**
  - 250K Axial, 90K ft/lbs Moment Load Lockable on 3 Degree Intervals
- **OPEN TOP, "NON ENCAPSULATED" NYLATRON BEARING SADDLE** (low-coefficient of friction). OPEN TOP = LESS FRICTION/LOW MAINTENANCE and EASIER PAY-OUT.
- No Pins or Cotters to Secure Reel Bar (*most critical safety point*)
- Yellow Zinc Electro-Plated and Stainless Precision Machined Components
- **PRACTICAL:** No Expensive, Unnecessary Bronze Components, yet we Don't Cut Corners and Provide Premium, Heavy Duty, Top-Quality Latches, Hardware, Fittings and Components.

**BUILT FOR SAFETY. BUILT FOR SPEED. BUILT TO LAST.**

## MAX REEL CAPACITY

- Height: 72", 84", 96"
- Width: 60"
- Weight: 8,000 lbs.

**ARBOR BAR:** 2.50" w/ Centering Collars

## DIMENSIONS (w/ 16" Drop-In Reel Brake)

- Length: 95.56"
- Width: 60"
- Height: 60.25" w/o Reel
- Weight: 2,300 lbs.

## STANDARD FEATURES

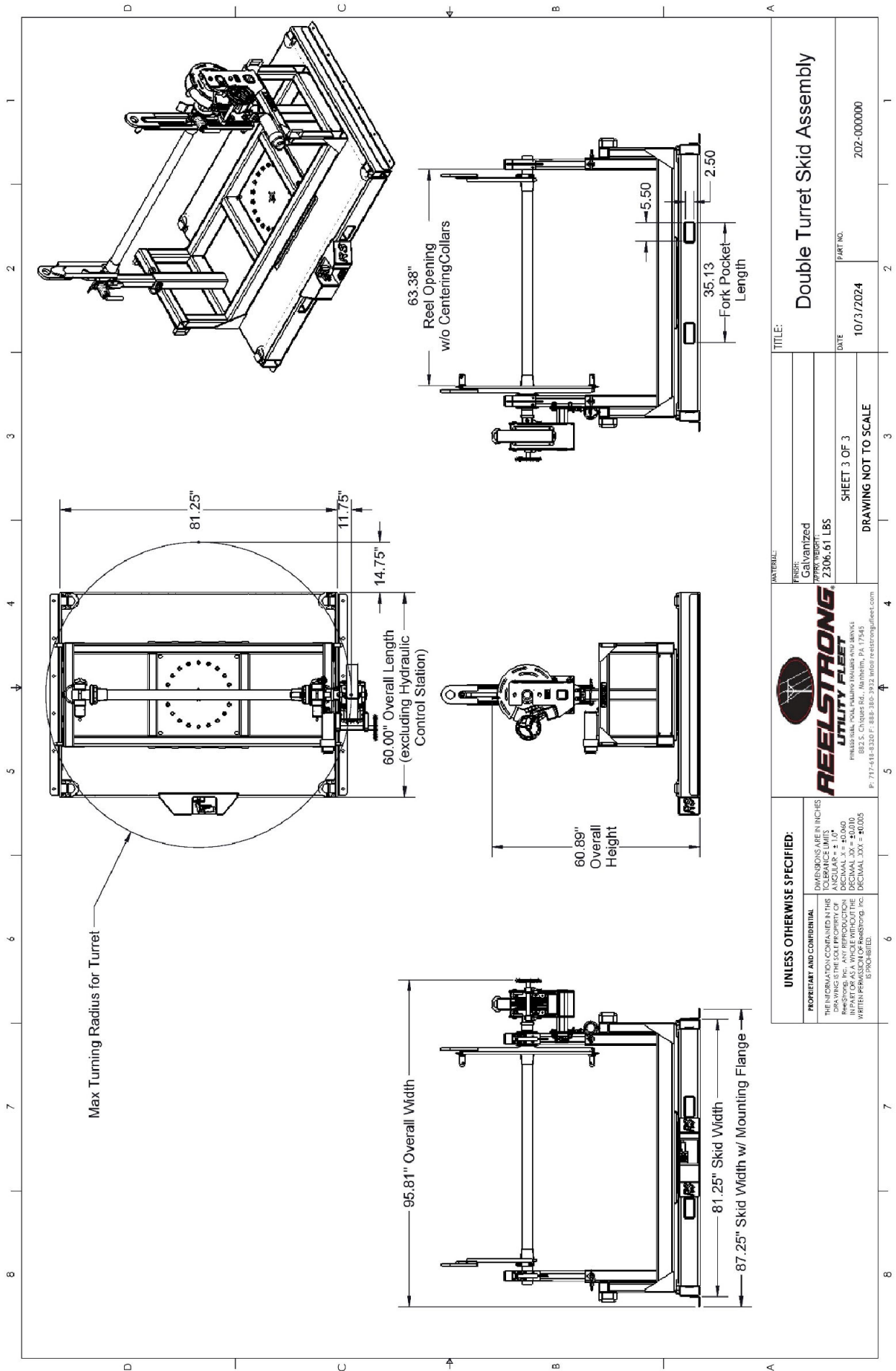
- **PINLESS POWERLOCK™ LIFETIME WARRANTY VIRTUALLY ZERO MAINTENANCE**  
Yellow Zinc Electroplated
- **OPEN TOP, "NON ENCAPSULATED" NYLATRON BEARING SADDLE** (low-coefficient of friction). OPEN TOP = LESS FRICTION/LOW MAINTENANCE and EASIER PAY-OUT.  
(Haven't Replaced a Saddle in 14 Years)
- No Tools Required to Replace Reels

## CONSTRUCTION

- Heavy Duty 6" X 3" X ¼" Frame
- Steel Tube Frame Continuously Welded
- D-Rings Located on Each Corner for Tie Down
- Mounting Flange Along the Length of the Skid to Mount on a Flatbed

## OPTIONS CHOSEN

- Galvanizing w/ 10-year Structural Warranty
- 16" Bronze Alloy Ventilated Reel Brake
- Conical Package for 2-1/2" Reel Bars
  - "Precision Machined" CONICAL centering collar w/ lift lug (Yellow Zinc Plated)
  - Removable sliding "Precision Machined" CONICAL drive bar cone (Yellow Zinc Plated)



<b>UNLESS OTHERWISE SPECIFIED:</b> DIMENSIONS ARE IN INCHES TOLERANCE LIMITS ANGULAR ± 1.0° DECIMAL ± .0060 DECIMAL .XXY ± .01005 IS PROHIBITED.		<b>REELSTRONG</b> UTILITY FLEET 882 S. Chatham Rd., Marple, PA 17545 P: 717-418-8320 F: 883-382-3932 info@reelstrongfleet.com	
<b>PROPRIETARY AND CONFIDENTIAL</b> THE INFORMATION CONTAINED IN THIS DRAWING IS THE SOLE PROPERTY OF REELSTRONG, INC. ANY REPRODUCTION OR TRANSMISSION OF THIS DRAWING WITHOUT WRITTEN PERMISSION OF REELSTRONG, INC. IS PROHIBITED.		MATERIAL: Galvanized pipe/structure WEIGHT: 2,306.61 LBS	
TITLE: Double Turret Skid Assembly		PART NO: 202-000000	
SHEET 3 OF 3		DATE: 10/3/2024	
DRAWING NOT TO SCALE			