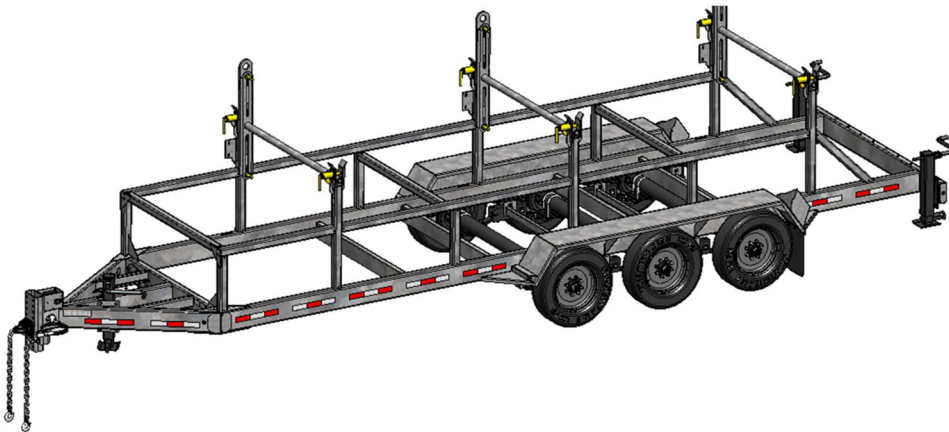


# **REELSTRONG**<sup>®</sup>

## **UTILITY FLEET**

### **MRST3 POWERLOCK™ REEL TRAILER SPECS**



#### **EXCLUSIVE STANDARD ADDED VALUE:**

- POWERLOCK™ Technology Provides Industry Leading Safety, Ease of Use, Low Maintenance and Durability.
  - SAFETY and Peace of Mind
  - No Pins, Cotters, or Lanyards that Secure the Reel Arbor (which is the most critical safety point).
  - Faster Reel Loading, Unloading, and Deployment Reduces Labor Costs and Fatigue on Workers.

**BUILT FOR SAFETY. BUILT FOR SPEED. BUILT TO LAST.**

## **CAPACITIES**

- MRST3-84-60: 34,000 lbs. GVWR @ 15% Tongue Weight
- MRST3-96-60: 33,150 lbs. GVWR @ 15% Tongue Weight

## **AXLES**

- MRST3-84-60: Tandem 15K lbs. Sprung
- MRST3-96-60: Triple 10K lbs. Sprung

## **WHEELS**

- MRST3-84-60: (4) 19.5 x 6.75 HC / 8 on 275mm BC w/ 0.63 Outset
- MRST3-96-60: (6) 17.5 x 6.75 HC / 8 on 6.5 BC w/ 0.19 Inset

## **TIRES**

- MRST3-84-60: (4) 285/70R19.5 18 Ply Tires
- MRST3-96-60: (6) 215/75R17.5 LR-H Tires

## **BRAKES**

- MRST3-84-60: 12.25" x 5.00" Electric w/ Safety Breakaway Kit
- MRST3-96-60: 12.25" x 3.38" Electric w/ Safety Breakaway Kit

## **PAYLOAD: ALL FINAL PAYLOADS BASED ON CHOSEN MODEL AND OPTIONS**

### **REEL WEIGHT (PAYLOAD)**

- MRST3-84-60: 27,000 lbs. (9,000 lbs. per Reel)
- MRST3-96-60: 27,000 lbs. (9,000 lbs. per Reel)

### **REEL DIAMETER**

- MRST3-84-60: (3) 84" Maximum
- MRST3-96-60: (3) 96" Maximum

**REEL WIDTH:** 60" Maximum

**REEL SHAFT DIAMETER:** 2.50" Tube w/ Centering Collars

**OVERALL LENGTH:** See Drawing.

**OVERALL WIDTH:** See Drawing.

### **OVERALL WEIGHT**

- MRST3-84-60: 5,500 lbs. Approx.
  - MRST3-96-60: 5,600 lbs. Approx.
- (Actual Trailer Weight will Vary with Options & Finishes Chosen)

## **STANDARD FEATURES**

- POWERLOCK™ Technology Provides Industry Leading Safety, Ease of Use, Low Maintenance and Durability.
- Oil Bath Hubs (Greaseable Option All)
- Electric Brakes
- Wheel Chock Holders

## **STANDARD TRAILER BODY**

- Heavy Duty 8" X 3" X ¼"
- 9-Position Adjustable Hitch (MRST3-84-60)
- 7-Position Adjustable Hitch (MRST3-96-60)
- ½" X 36" GR70 Yellow Zinc Safety Chains with Hooks
- 12,000 lbs. Static Front Jack w/ Spring Return
- Ground Lug: Copper Alloy Bolted to Frame
- Fenders: ⅛" Tread Plate
- A-frame: Approx. 5' Long

## **WIRING**

- DOT / ICC Approved LED Lights and Conspicuity Reflective Tape
- FMVSS / CMVSS Standard 108 LED Lighting
- Sealed Beam, Rubber Mounted Stop, Turn, Tail and Marker Lights
- 100% Sealed Heat-Shrunked Wiring Connections w/ Full Loom
- Breakaway Kit with Absorbed Glass Mat (AGM) Battery

## **PAINT**

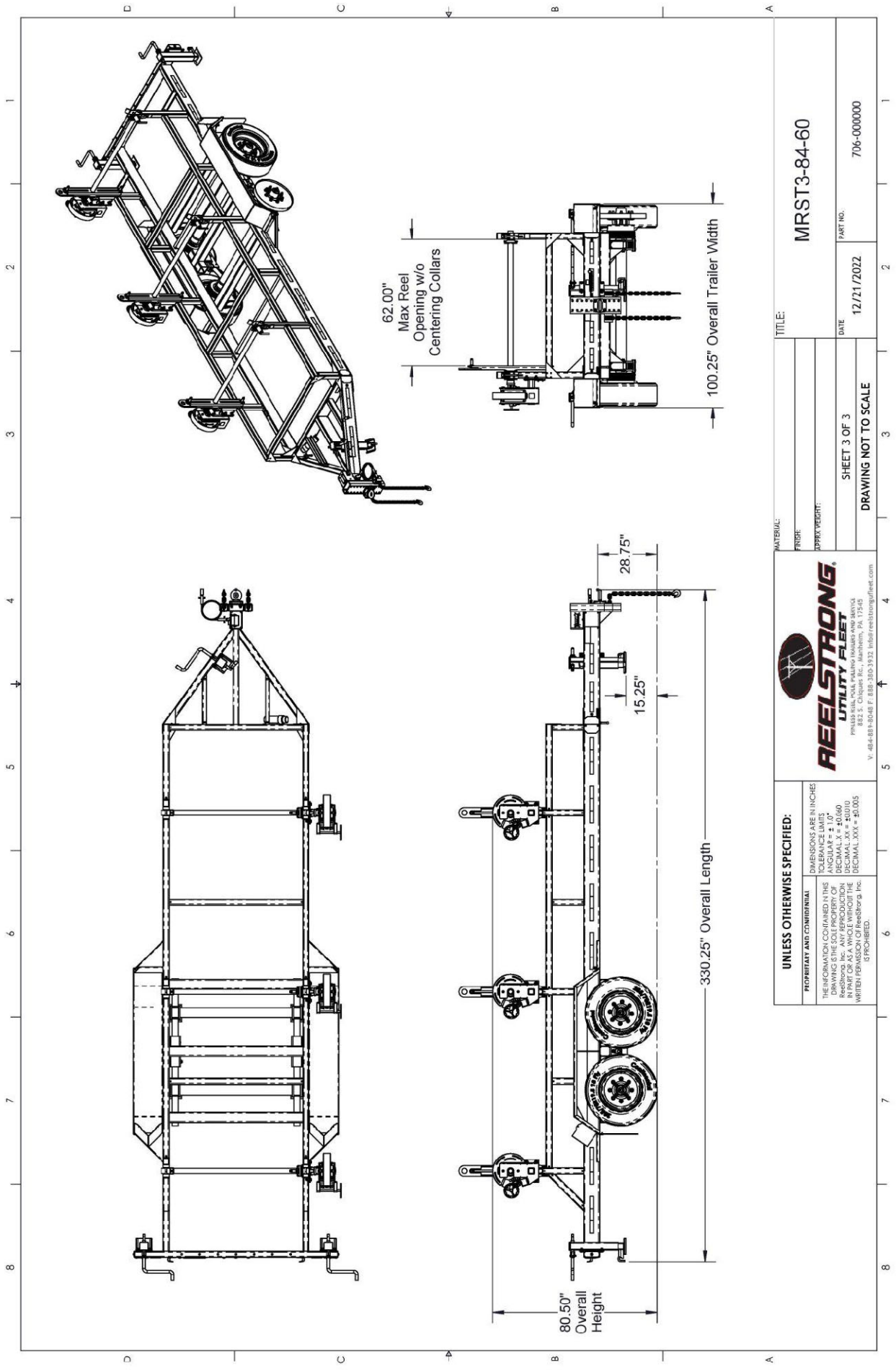
- Biodegradable Pretreat Acid Cleaning (Superior to re-used sandblasting material that can impregnate metals with oil)
- Seams Caulked
- Rust Preventative 2-Part Epoxy Primer
- Standard Colors: Red, Black, White and CAT Yellow

## **OPTIONS**

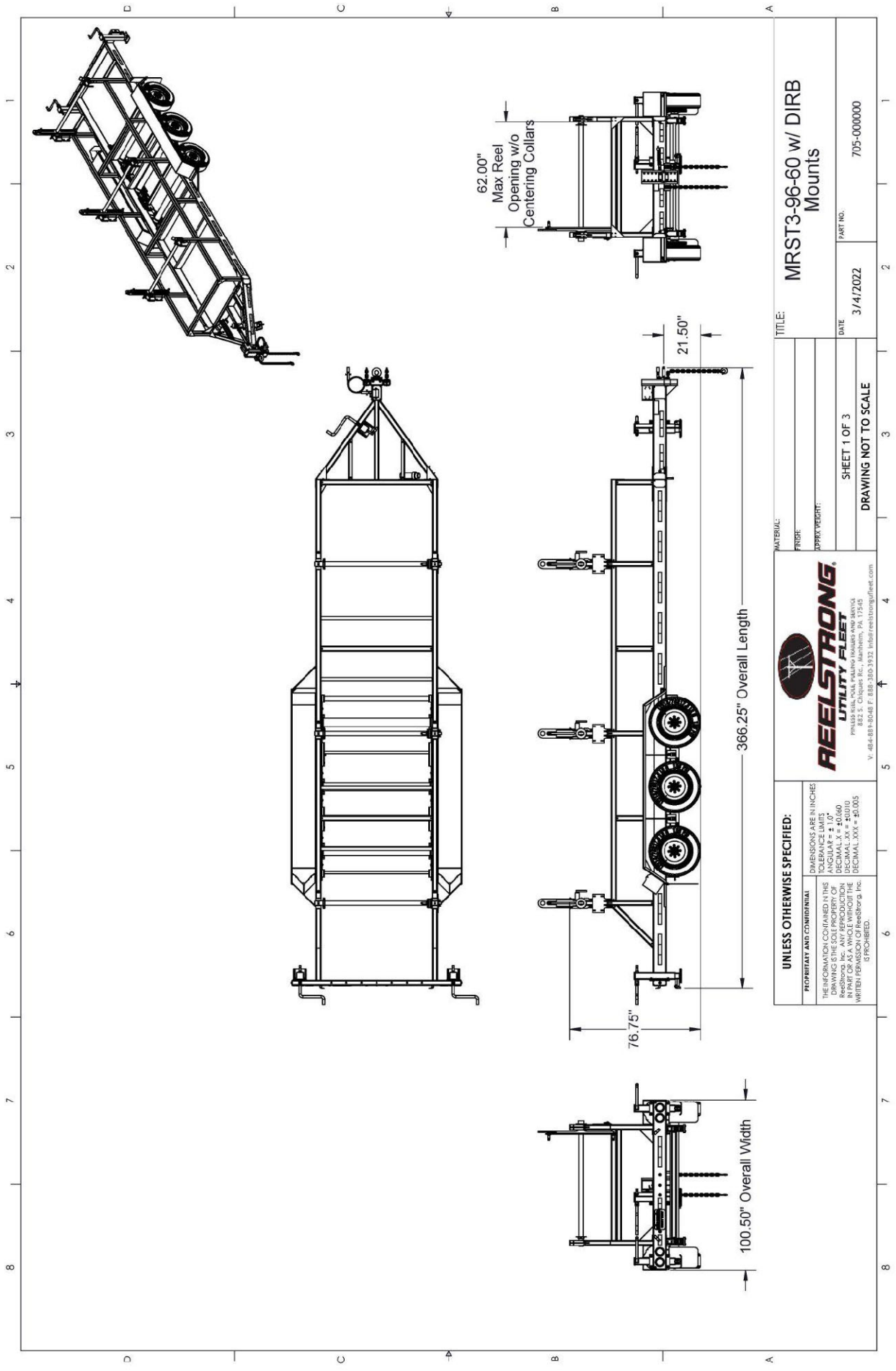
- 10-Year Galvanized Structural Warranty (2-Year Painted)
- 13 HP HONDA Engine Hydraulic Power Pack Comes STANDARD w/ ENGINE COVER, 15 Gallon Reservoir, Replaceable Oil Filter, Pressure Gauge and Solar Fade Resistant Plastic Control Placard. (Electric Start Optional)
- 3,300 or 4,800 ft/lbs Torque Hydraulic Take-up Retriever. (*Motor Spooled w/ Reel Brake ILO Cross-Over Relief Valve for Smooth Instant Reel Stoppage*)
- 2-7/16" Universal Adapter for Capstan and Power Reel Attachments
- 7 Inch General Purpose Capstan
- Collapsible Power Reel
- Rotating Arbor Ground
- Auxiliary Hydraulic Quick-Connect Ports
- Rewind Leveler

### **OPTIONS (cont.)**

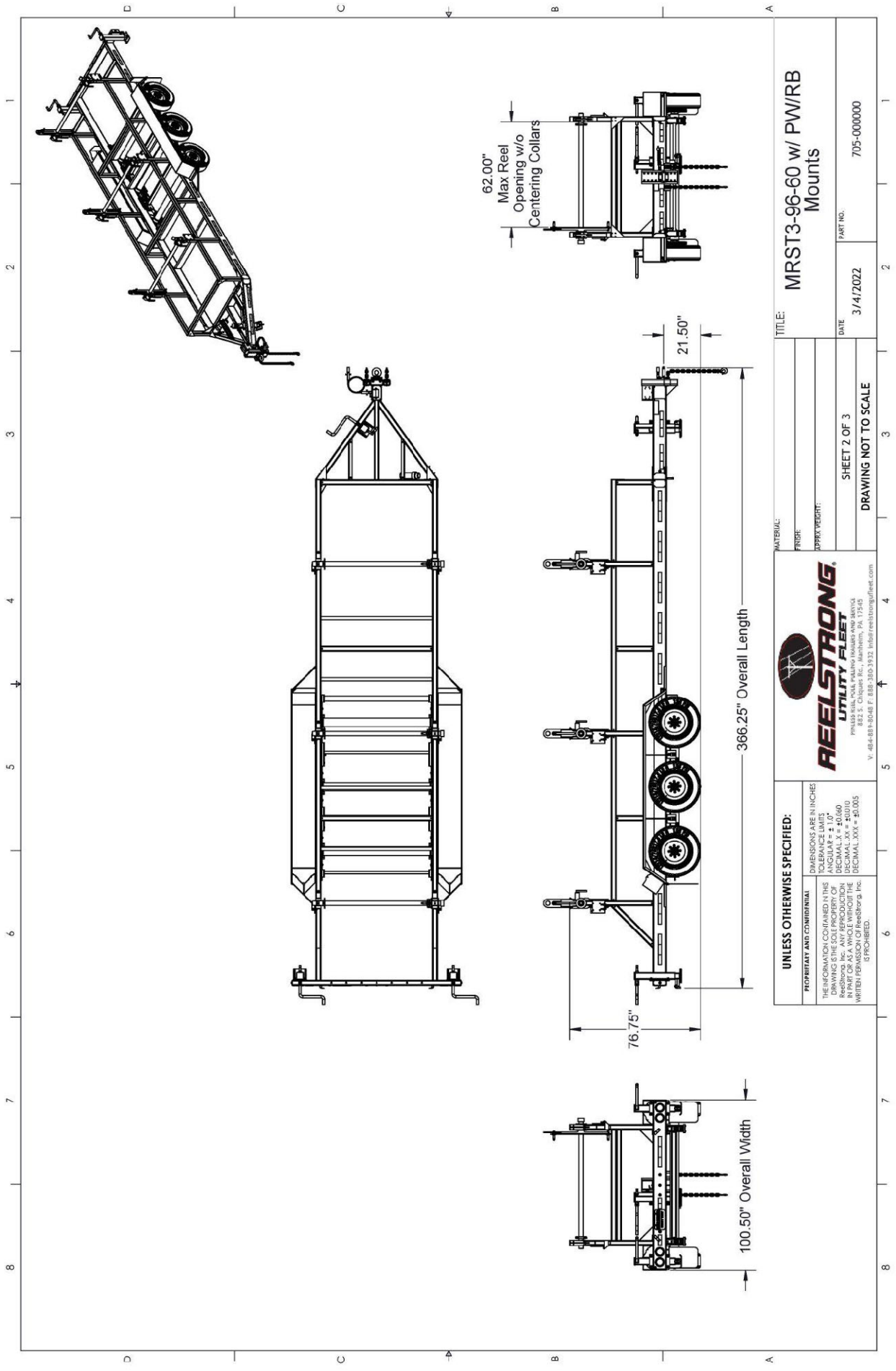
- 16" Bronze Alloy Ventilated Reel Brake w/ Ventilated Guard
- 16" Long 6-Bolt Hitch Extension (w/ 52" Safety Chains and Breakaway Cable Extension)
- Aluminum or Steel Toolbox
- 10K-HD / 15K / 20K Axles Available w/ Air Brakes
- Anti-Lock Brakes (ABS)
- Wiring Connections Soldered and Sealed w/ Heat Shrink Tubing
- Plug-and-Play Sealco Wiring Harness
- Wheel Chocks: Rubber or All Weather Galvanized Grip Strut
- Spare Tire and Mount
- Solar Charged Breakaway Kit
- Strobe Warning Lights
- All Stainless Steel Fasteners (1/2" and under)
- Hydraulic Front Jack
- Rear Underground Fairlead Roller Attachment
- Truck-Lite Lighting
- Lug Nut Indicators



<b>UNLESS OTHERWISE SPECIFIED:</b> DIMENSIONS ARE IN INCHES TOLERANCE LIMITS DECIMAL .XX = ±0.005 DECIMAL .XXX = ±0.010 DECIMAL .XXXX = ±0.015 DECIMAL .XXXXX = ±0.020 DECIMAL .XXXXXX = ±0.025 DECIMAL .XXXXXXX = ±0.030 DECIMAL .XXXXXXXX = ±0.035 DECIMAL .XXXXXXXXX = ±0.040 DECIMAL .XXXXXXXXXX = ±0.045 DECIMAL .XXXXXXXXXXX = ±0.050 DECIMAL .XXXXXXXXXXX = ±0.055 DECIMAL .XXXXXXXXXXX = ±0.060 DECIMAL .XXXXXXXXXXX = ±0.065 DECIMAL .XXXXXXXXXXX = ±0.070 DECIMAL .XXXXXXXXXXX = ±0.075 DECIMAL .XXXXXXXXXXX = ±0.080 DECIMAL .XXXXXXXXXXX = ±0.085 DECIMAL .XXXXXXXXXXX = ±0.090 DECIMAL .XXXXXXXXXXX = ±0.095 DECIMAL .XXXXXXXXXXX = ±0.100		<b>PROPRIETARY AND CONFIDENTIAL</b> THE INFORMATION CONTAINED IN THIS DRAWING IS THE SOLE PROPERTY OF REELSTRONG, INC. ANY REUSE OR DISTRIBUTION OF THIS DRAWING IN PART OR AS A WHOLE WITHOUT THE WRITTEN PERMISSION OF REELSTRONG, INC. IS PROHIBITED.	
<b>REELSTRONG</b> UTILITY FLEET 882 S. Claque Rd., Mahan, PA 17245 V. 484-881-8048 F. 888-380-3932 info@reelstrong.com		TITLE: <b>MRST3-84-60</b> PART NO. 706-000000 DATE 12/11/2022 SHEET 3 OF 3 DRAWING NOT TO SCALE	



<b>UNLESS OTHERWISE SPECIFIED:</b> PROPRIETARY AND CONFIDENTIAL THE INFORMATION CONTAINED IN THIS DRAWING IS THE SOLE PROPERTY OF REELSTRONG, INC. ANY REUSE OR REPRODUCTION IN WHOLE OR IN PART WITHOUT THE WRITTEN PERMISSION OF REELSTRONG, INC. IS PROHIBITED.		DIMENSIONS ARE IN INCHES! TOLERANCE LIMITS DECIMAL...XX = ±0.005 DECIMAL...XX = ±0.010 DECIMAL...XXX = ±0.005	
<b>REELSTRONG</b> UTILITY FLEET 882 S. Clippings Rd., Mahanoma, PA 17245 V. 484-881-3048 F. 888-380-3932 info@reelstrongfleet.com		TITLE: <b>MRST3-96-60 w/ DIRB Mounts</b> MATERIAL: _____ FINISH: _____ APPROX. WEIGHT: _____	
SHEET 1 OF 3 DRAWING NOT TO SCALE		DATE: 3/14/2022 PART NO.: 705-000000	



<b>UNLESS OTHERWISE SPECIFIED:</b> PROPRIETARY AND CONFIDENTIAL THE INFORMATION CONTAINED IN THIS DRAWING IS THE SOLE PROPERTY OF REELSTRONG, INC. ANY REUSE OR TRANSMISSION IN ANY FORM OR BY ANY MEANS WITHOUT THE WRITTEN PERMISSION OF ReelStrong, Inc. IS PROHIBITED.		DIMENSIONS ARE IN INCHES! TOLERANCE LIMITS DECIMAL...XX = +0.000 DECIMAL...XX = +0.010 DECIMAL...XXX = +0.005	
<b>REELSTRONG</b> UTILITY FLEET 882 S. Claque Rd., Manheim, PA 17345 V. 484-881-8048 F. 888-380-3932 info@reelstrong.com		TITLE: <b>MRST3-96-60 w/ PW/RB Mounts</b> MATERIAL: _____ FINISH: _____ APPROX. WEIGHT: _____	
SHEET 2 OF 3 DRAWING NOT TO SCALE		DATE: 3/14/2022 PART NO.: 705-000000	