

# **REELSTRONG®**

## **UTILITY FLEET**

### **SPU-35 MOBILE OVD/URD UNIVERSAL P-LINE PULLER SPECS**



#### **EXCLUSIVE STANDARD ADDED VALUE:**

- Industry Leading Safety, Ease of Use, Low Maintenance and Durability.
- Universal Adapter & Adjustable Rollers Accept Sherman & Reilly, TSE, & Eagle Spider Systems.
- Patent Pending 180° Degree Underground / Overhead Turret Winch Levelwind & Directional Control All-in-One.
- Hydraulic Rotating Turret Crane for Safety & Ease.
- Hydraulic Controlled Winch Traverse Prevents Runaway Winch,

***BUILT FOR SAFETY. BUILT FOR SPEED. BUILT TO LAST.***

**MACHINE'S PURPOSE:** The SPU-35 is a Pilot Line System for pulling in P-Lines, bull rope or direct to conductor. In many cases pulling directly to the conductor can save a significant amount of labor.

**PROS :**

- **VERY VERSATILE**
- **3,000 LBS OF PULL IN A COMPACT, SELF-CONTAINED PACKAGE**
- **ACCEPTS S&R, TSE and EAGLE CONTROLLER BASED "SPIDER STYLE" STRINGING SYSTEMS**
- **OVERHEAD "AND" UNDERGROUND PULLER ILO FOUR DRUM JUST OVERHEAD**
- **PATENT PENDING 180 DEGREE ROTATING LEVELWIND AND DIRECTIONAL ALL-IN-ONE TURRET FOR ULTRA-EASY LEVELWINDING.**
- **PULL 90 DEGREE FROM RIGHT AWAYS. NO LINING TRUCK UP WITH WORK (IN MOST CASES)**
- **TRAILER IS COMPACT STORAGE FOR ROPE, REELS AND CONTROLLERS**

**CONS:**

- **CAN ONLY PULL ONE CONDUCTOR AT A TIME vs FOUR-DRUM PULLER**
- **MUST CHANGE OUT REELS WITH CRANE ONE AT A TIME**

**CAPACITIES:** 9,200 lbs. GVWR @ 15% Tongue Weight

**AXLES:** 8K lbs. Torsion

**WHEELS:** (2) 17.5 x 6.75 HC / 8 on 6.5 BC w/ 0.19 Inset

**TIRES:** (2) ST-215/75R17.5 LR-H Tires

**BRAKES:** 12.25" x 3.38" Electric w/ Safety Breakaway Kit

**PAYLOAD: ALL FINAL PAYLOADS BASED ON CHOSEN MODEL AND OPTIONS**

**REEL WEIGHT (PAYLOAD):** 3,100 lbs. Approx. (Combined)

**REEL DIAMETER:** 30" Maximum

**REEL WIDTH:** 15.50" Maximum

**REEL SHAFT DIAMETER:** 2-7/16" Tube

**OVERALL LENGTH:** 16.5' Approx. (194.75")

**OVERALL WIDTH:** 97.25"

**CURB WEIGHT:** 6,100 lbs. Approx. (Combined)

*Actual Trailer Weight will Vary with Options & Finishes Chosen.*

#### **STANDARD FEATURES**

- Industry Leading Safety, Ease of Use, Low Maintenance and Durability.
- Vanguard 35 HP Engine Pack Comes STANDARD w/ ENGINE COVER and Noise Suppression
- Oil Bath Hubs (Greaseable Option All)
- Electric Brakes
- Wheel Chock Holders
- Adjustable Swing Away Seat
- Ultra-Smooth Torsion Axle
- Low Center of Gravity

## **FUNCTIONAL DESCRIPTION:**

The Reelstrong UF Universal Mobile Spider System is a 100% self-contained overhead / underground pulling system that accepts all major Spider Systems that you may already own and / or wish to purchase, consolidating your fleet and tool equipment into a compact, time and money saving, half (½) ton towable package. The dual-purpose Patent-Pending reel winch hydraulically rotates on a turret allowing for safe and convenient directional control of rope from any 180-degree angle in tight spots and “levelwinds” without the need for a hydraulic cylinder powered traversing fairlead. The reel lift crane is controlled by a tethering remote pendant keeping the operator safely away from the rotating crane and the “hydraulic traversing” (non free-sliding) which prevents the possibility of a runaway winch on uneven terrain further protecting the operator. It’s the most safe, convenient, and cost-effective spider pulling system ever made.

## **STANDARD TRAILER BODY**

- Heavy Duty 6” X 3” X ¼” Frame
- 6-Position Adjustable Hitch
- ¾” X 36” GR70 Yellow Zinc Safety Chains with Hooks
- (1) Hydraulic Front Jack
- (2) Rear Hydraulic Stabilizer Jacks
- Ground Lug: Copper Alloy Bolted to Frame
- Fenders: ½” Plate
- 10-Year Galvanized Structural Warranty (2-Year Painted)

## **WIRING**

- DOT / ICC Approved LED Lights and Conspicuity Reflective Tape
- FMVSS / CMVSS Standard 108 LED Lighting
- Sealed Beam, Rubber Mounted Stop, Turn, Tail and Marker Lights
- 100% Sealed Heat-Shrunked Wiring Connections w/ Full Loom
- Breakaway Kit with Absorbed Glass Mat (AGM) Battery

## **PAINT**

- Biodegradable Pretreat Acid Cleaning (Superior to re-used sandblasting material that can impregnate metals with oil)
- Seams Caulked
- Rust Preventative 2-Part Epoxy Primer
- Standard Colors: Red, Black, White and CAT Yellow
- Yanmar Tier 4 Diesel Engine Pack Comes STANDARD w/ ENGINE COVER
- Auxiliary Hydraulic Quick-Connect Ports
- 16” Long 6-Bolt Hitch Extension (w/ 52” Safety Chains and Breakaway Cable Extension)

## OPTIONS

- 3" Lunette Eye
- Wiring Connections Soldered and Sealed w/ Heat Shrink Tubing
- Plug-and-Play Sealco Wiring Harness
- Wheel Chocks: Rubber or All Weather Galvanized Grip Strut
- Spare Tire and Mount
- Solar Charged Breakaway Kit
- Aluminum or Steel Toolbox
- 12" Caster Wheel for Tongue Jack
- Strobe Warning Lights
- All Stainless Steel Fasteners (1/2" and under)
- 7 Inch Capstan
- Collapsible Power Reel
- Fiber Optic Clutch Capstan
- Truck-Lite Lighting
- Lug Nut Indicators
- Underground Package
  - Pad Mount Transformer Arm
  - Fairlead for Wire Rope
- Universal AT&T Bayonet Adapter
- 3,000 Ft. Aluminum Reel for 5/16" Rope (3/8" and 1/2" Rope Available)
- 6,000 Ft. Aluminum Reel for 5/16" Rope (3/8" and 1/2" Rope Available)
- 3,500 Ft. Aluminum Reel for 3/8" Rope (1/2" Rope Available)
- 3,000 Ft. Steel Reel for 3/8" Steel Cable (for Underground Package)
- 5/16", 3/8", or 1/2" Rope (Yellow, Red, Blue, Green)

**ESTIMATE LINE TENSION (IN LBS) BY ALIGNING THE PULLING DIAMETER TO THE HYDRAULIC PRESSURE SETTING**

		PULLING MOTOR HYDRAULIC PRESSURE GAUGE READING (IN PSI)												
		200	400	600	800	1000	1200	1400	1600	1800	2000	2200	2400	2600
<b>PULLING DIAMETER</b>	<b>30</b>	91	337	587	840	1097	1356	1617	1878	2140	2401	2662	2920	3176
	<b>28</b>	98	361	629	900	1175	1453	1732	2012	2293	2573	2852	3128	3402
	<b>26</b>	105	388	677	970	1266	1565	1865	2167	2469	2771	3071	3369	3664
	<b>24</b>	114	421	733	1051	1371	1040	2021	2348	2675	3002	3327	2650	3970
	<b>22</b>	124	459	800	1146	1496	1849	2205	2561	2918	3275	3629	3982	4330
	<b>20</b>	137	505	880	1261	1646	2034	2425	2817	3210	3602	3992	4380	4763
	<b>18</b>	152	561	978	1401	1829	2260	2695	3130	3567	4002	4436	4866	5293
	<b>16</b>	171	631	1100	1576	2057	2543	3031	3522	4013	4503	4990	5475	5954
	<b>14</b>	195	721	1257	1801	2351	2906	3464	4025	4586	5146	5703	6257	6805

**XXXX OVERHEAD PULL SETTING**

**ESTIMATE LINE SPEED BY ALIGNING THE FLOW CONTROL SETTING TO THE PULLING DIAMETER**

		PULLING DIAMETER									
		14	16	18	20	22	24	26	28	30	
<b>FLOW CONTROL</b>	<b>100%</b>	FT/MIN	92	106	119	132	145	158	172	185	198
		MPH	1.0	1.2	1.3	1.5	1.6	1.8	1.9	2.1	2.2
	<b>75%</b>	FT/MIN	69	79	89	99	109	119	129	139	149
		MPH	0.8	0.9	1.0	1.1	1.2	1.3	1.5	1.6	1.7
	<b>50%</b>	FT/MIN	46	53	59	66	73	79	86	92	99
		MPH	0.5	0.6	0.7	0.7	0.8	0.9	1.0	1.0	1.1
	<b>25%</b>	FT/MIN	23	26	30	33	36	40	43	46	50
		MPH	0.3	0.3	0.3	0.4	0.4	0.4	0.5	0.5	0.6

**ESTIMATES ARE BASED ON ENGINE SPEED OF 2500 RPM**

—All specifications / designs are subject to change without notice - All GVWR and reel capacities are de-rateable to your needs

# PE-12/Pilot Line



## PE-12

PE-12 has been re-engineered, boosting its strengths significantly. Using the same high-tenacity fiber we use in our value-packed Portland Braid, this polyester single braid offers a single-end-per-carrier construction, which keeps the rope from flattening out in service and self centers in sheaves beautifully. PE-12 comes with

the same tough grades of Maxijacket urethane we use on our more expensive products. PE-12 is easy to splice, and field repairs are easily accomplished. It is available in unlimited lengths and brilliant colors for easy identification. PE-12 is torque free and is undamaged when rigging with swivels.

### Specifications

Diameter		Average Spliced Break Strength*		Minimum Spliced Break Strength*		Maximum** Working Load 5:1		Weight	
Inches	(mm)	Lbs	Kg	Lbs	Kg	Lbs	Kg	Lbs/100ft	Kg/100m
5/16	(8)	3,900	1,770	3,510	1,593	780	354	2.9	4.3
3/8	(10)	5,900	2,675	5,310	2,408	1,180	535	3.9	5.8
7/16	(11)	10,000	4,540	9,000	4,086	2,000	980	6.4	9.5
1/2	(13)	12,500	5,675	11,250	5,108	2,500	1,135	8.5	12.7
9/16	(14)	15,800	7,170	14,220	6,453	3,160	1,434	10.5	15.6
5/8	(16)	18,500	8,395	16,650	7,556	3,700	1,679	11.4	17.0
3/4	(19)	23,250	10,555	20,925	9,500	4,650	2,111	17.4	25.9
7/8	(22)	34,350	15,590	30,915	14,031	6,870	3,118	25.9	38.6
1	(25)	41,600	18,885	37,440	16,997	8,320	3,777	31.3	46.6



## Pilot Line

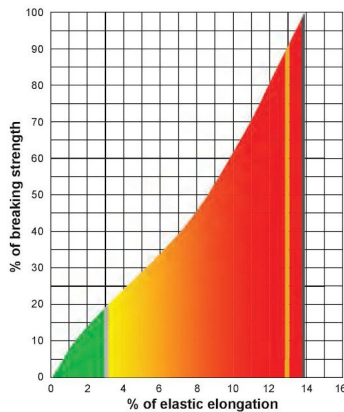
Pilot Line is a 12-strand 100% polyester single braid with Maxijacket coating to improve abrasion resistance.

It is used as a pilot line for stringing applications. Available in standard colors of black, blue, green and red. Other colors available upon request.

### Specifications

Nominal Diameter		Average Spliced Break Strength*		Minimum Spliced Break Strength*		Maximum** Working Load 5:1		Weight	
Inches	(mm)	Lbs	Kg	Lbs	Kg	Lbs	Kg	Lbs/100ft	Kg/100m
5/16	(8)	3,600	1,630	3,240	1,467	720	326	2.3	3.4

\* Knots and abrupt bends significantly reduce the strength of all ropes and lower maximum working load.  
 \*\* Working load is based on static or moderately dynamic lifting/pulling operations. Instantaneous changes in load up or down, in excess of 10% of the rope's rated working load constitute hazardous shock load and would void the normal working-load recommendation. Consult Yale Cordage for guidelines for working loads and the safe use of rope.



### Energy Absorption

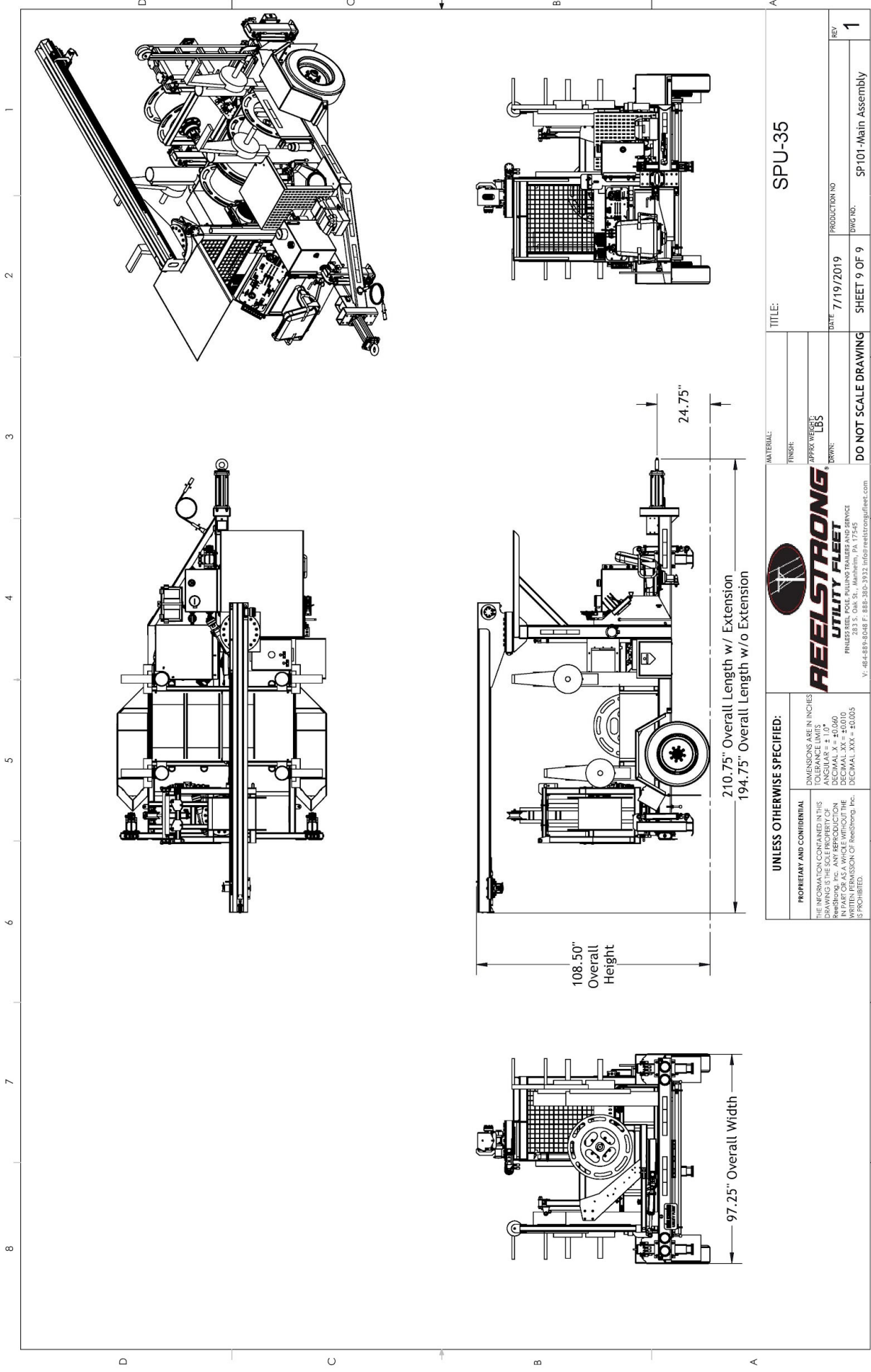
The colored area under the curve represents the rope's ability to do "work" and is expressed in foot-pounds per pound of rope in tension.  
 ■ Green working 406 ft. lbs./lb.  
 ■ Red ultimate 8,738 ft. lbs./lb.

**Dielectric Strength:** The maximum allowable leakage for clean, dry PE-12 and Pilot Line is 100 micro-amperes when tested at 100kV per Yale Method 712-1701 Rev 1 "Routine Production Test." Absorbed and entrained moisture or impurities will increase rope's conductivity dramatically.

Approved Splice Technique: #10015101.

- Maximum Working Load
- Minimum Break Strength
- Average Break Strength

Specific Gravity: 1.38



<p><b>UNLESS OTHERWISE SPECIFIED:</b></p> <p>PROPRIETARY AND CONFIDENTIAL          THE INFORMATION CONTAINED IN THIS DRAWING IS THE SOLE PROPERTY OF REELSTRONG UTILITY FLEET, INC. AND IS TO BE USED FOR THE PART OR AS A WHOLE WITHOUT THE WRITTEN PERMISSION OF Reelstrong, Inc. IS PROHIBITED.</p>		<p>REELSTRONG UTILITY FLEET</p> <p>PHILADELPHIA, PA 19104          283 S. Oak St., Meridian, PA 17245          V: 484-889-8048 F: 888-380-3932 info@reelstrongutility.com</p>		<p>MATERIAL: _____</p> <p>FINISH: _____</p> <p>APPROX WEIGHT: _____ LBS</p> <p>DRAWN: _____</p>		<p>TITLE: SPU-35</p>	
<p>DATE: 7/19/2019</p>		<p>PRODUCTION NO: _____</p>		<p>REV: 1</p>		<p>DO NOT SCALE DRAWING</p>	
<p>SHEET 9 OF 9</p>		<p>SP101 - Main Assembly</p>		<p>DATE: 7/19/2019</p>		<p>PRODUCTION NO: _____</p>	