

# **REELSTRONG®**

## **UTILITY FLEET**

### **PT HEAVY DUTY LIFETIME WARRANTY MEGA-ROLLER™ w/ SELF-SECURING TONGUE-LOCK POLE TRAILER SPECIFICATION**



**MEGA-ROLLER™ W/  
SECURELOCK™ SYSTEM  
(PATENT PENDING)**

#### **LOWEST TOTAL COST OF OWNERSHIP (TCO) FROM:**

- **LIFETIME WARRANTY MEGA-ROLLER™** (6 Roller Patent Pending) w/ Bronze Super Alloy Bearings Provides a Smooth “ONE MAN OPERATION” of the Tongue. NO TRUCK NEEDED to Extend or Retract. NO WEAR PADS TO MAINTAIN OR REPLACE.
- SELF-SECURING SECURELOCK™ Tongue-lock. No Pins to Lose.
- **PRACTICAL:** No Expensive, Unnecessary Bronze Components, yet we Don't Cut Corners and Provide Premium, Heavy Duty, Top-Quality Latches, Hardware, Fittings and Components.
- Non-Binding/Freezing EZ Slide Pole Centering Stanchions. Replaces Rusted/Seized Lever Lock Stanchions and Expensive Bronze.
- Heavy Duty yet Simple 5” H-Beam Pole Seats

***BUILT FOR SAFETY. BUILT FOR SPEED. BUILT TO LAST.***

## CAPACITIES

- PT24: 27,600 lbs. GVWR @ 15% Tongue Weight
- PT24-RE: 27,600 lbs. GVWR @ 15% Tongue Weight
- PT30: 34,500 lbs. GVWR @ 15% Tongue Weight
- PT30-RE: 34,500 lbs. GVWR @ 15% Tongue Weight

## AXLES

- PT24: Tandem 12K lbs. Sprung
- PT24-RE: Tandem 12K lbs. Sprung
- PT30: Tandem 15K lbs. Sprung
- PT30-RE: Tandem 15K lbs. Sprung

## WHEELS

- PT24: (8) 16 x 6K / 8 on 6.5 BC w/ 5.50 Outset
- PT24-RE: (8) 16 x 6K / 8 on 6.5 BC w/ 5.50 Outset
- PT30: (8) 17.5 x 6.75 HC / 8 on 275mm BC w/ 5.60 Outset
- PT30-RE: (8) 17.5 x 6.75 HC / 8 on 275mm BC w/ 5.60 Outset

## TIRES

- PT24: (8) ST-235/85R16 LR-E Tires
- PT24-RE: (8) ST-235/85R16 LR-E Tires
- PT30: (8) ST-215/75R17.5 LR-H Tires
- PT30-RE: (8) ST-215/75R17.5 LR-H Tires

## BRAKES

- PT24: 12.25" x 5.00" Electric w/ Safety Breakaway Kit
- PT24-RE: 12.25" x 5.00" Electric w/ Safety Breakaway Kit
- PT30: 12.25" x 5.00" Electric w/ Safety Breakaway Kit
- PT30-RE: 12.25" x 5.00" Electric w/ Safety Breakaway Kit

## PAYLOAD: ALL FINAL PAYLOADS BASED ON CHOSEN MODEL AND OPTIONS

### POLE WEIGHT (PAYLOAD)

- PT24: 20,950 lbs. Approx.
- PT24-RE: 19,600 lbs. Approx.
- PT30: 27,150 lbs. Approx.
- PT30-RE: 25,500 lbs. Approx.

### LENGTH Retracted / Extended Lengths:

- PT24: 32' / 36.5' / 41' / 45.5' / 50'
- PT24-RE: 34.25' / 40.5' / 46.75' / 53' / 63'
- PT30: 32' / 36.5' / 41' / 45.5' / 50'
- PT30-RE: 34.25' / 40.5' / 46.75' / 53' / 63'

**WIDTH:** See Drawings Below

**WEIGHT:**

- PT24: 6,650 lbs. Approx.
- PT24-RE: 8,000 lbs. Approx.
- PT30: 7,350 lbs. Approx.
- PT30-RE: 8,700 lbs. Approx.

*Actual Trailer Weight will Vary with Options & Finishes Chosen.*

**CARGO BED**

- PT24: 100" X 43" (Customizable)
- PT24-RE: 100" X 41" (Customizable)
- PT30: 100" X 43" (Customizable)
- PT30-RE: 100" X 41" (Customizable)

**STANDARD FEATURES**

- **LIFETIME WARRANTY MEGA-ROLLER 6-ROLLER** Telescoping Tongue  
(NO WEAR PADS TO REPLACE)
- **LIFETIME WARRANTY MEGA-ROLLER 8-ROLLER** Telescoping Rear Extension  
(NO WEAR PADS TO REPLACE) (PT24-RE and PT30-RE only)
- **SELF-SECURING SECURELOCK™** Tongue Lock Roller System (No Loose Pin)
- **NON-BINDING/FREEZING EZ-SLIDE POLE-CENTERING STANCHIONS**
- Oil Bath Hubs (Greaseable Option All)
- Electric Brakes
- Wheel Chock Holders
- Adjustable Spring Pads
- Slipper Springs
- Reinforced Spring Hangers
- Wheel Chock Holders
- ALL Pole Rests: 5" H Beam
- Winch Binders w/ Ratcheting Breaker Bar (**BOA Crank Winch Optional**)

**STANDARD TRAILER BODY**

- 6" X 6" X 3/8" Wall ("Square" for Max Equal Lateral and Vertical Strength) Male Extendable Tongue Tube (Compare to Competition)
- 8" X 8" X 1/4" Wall Female Tongue Tube
- 7" X 3" X 1/4" Wall Male Extendable Rear Extension Tubes (PT24-RE and PT30-RE only)
- 8" X 4" X 1/4" Wall Female Rear Extension Tubes (PT24-RE and PT30-RE only)
- Oversized Precision Rollers w/ Bronze Bearings
- 7-Position Adjustable Hitch
- 1/2" X 42" GR70 Yellow Zinc Safety Chains with Hooks
- Removable Male Extension Tongue
- Standard Cargo Area

—All specifications / designs are subject to change without notice - All GVWR and reel capacities are de-rateable to your needs.

## **STANDARD TRAILER BODY (cont.)**

- 12,000 lbs. Static Front Jack w/ Spring Return
- Fenders: 1/8" Fabricated Diamond Plate

## **WIRING**

- DOT / ICC-- FMVSS / CMVSS Approved LED ULTRA- HIGH VISIBILITY 180 DEGREE BULLET Marker and Clearance Lights
- LED Sealed Beam Rubber Mounted Stop, Turn, Tail and Marker Lights
- **Internal Cat Track** Protects Wiring (and air brakes if applicable)
- Removable Rear Access Door to Access Cat Track and Wiring
- Breakaway Kit with Absorbed Glass Mat (AGM) Battery
- 100% Sealed Heat-Shrunked Wiring Connections w/ Full Loom
- FULLY PROTECTED 7 or 6 Way Female Plug acts as Junction Box Recessed in FRAME RAIL.  
No Easily Damaged Plastic Junction Boxes

## **PAINT**

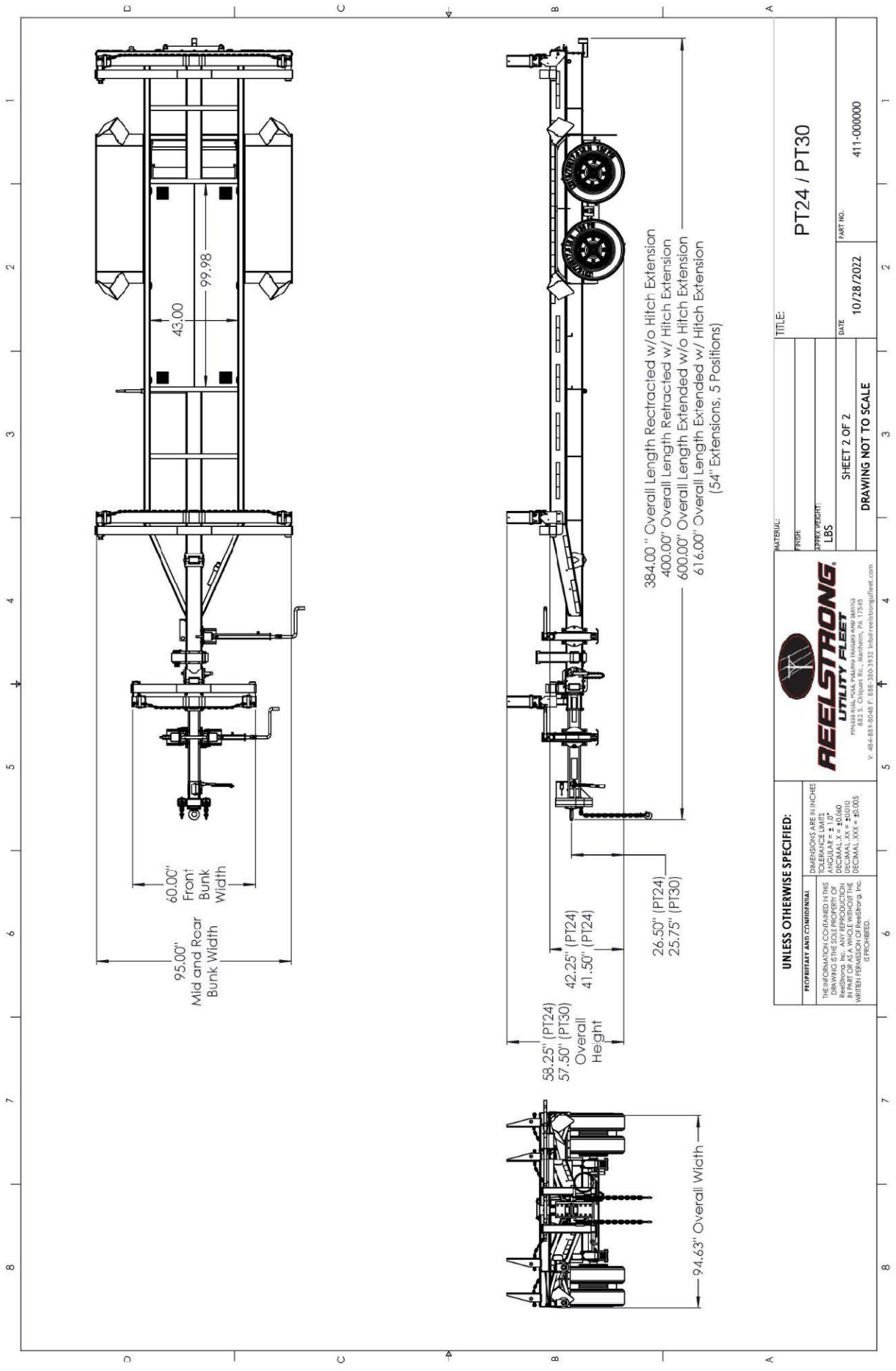
- Biodegradable Pretreat Acid Cleaning (Superior to re-used sandblasting material that can impregnate metals with oil)
- Seams Caulked
- Rust Preventative 2-Part Epoxy Primer
- Two-Part Polyurethane Topcoats (2 topcoats)
- Standard Colors: White and CAT Yellow (Custom Available)

## **OPTIONS**

- 10-Year Galvanized Structural Warranty (2-Year Painted)
- BOA Hand Operated Ratcheting Pole Strap Winch for SAFETY and Ultra Ease-of-use
- Air Brakes w/ ABS
- Lever Lock Stanchions
- Wiring Connections Soldered and Sealed w/ Heat Shrink Tubing
- Plug-and-Play Sealco Wiring Harness
- Lever Lock Stanchions
- Wheel Chocks: Rubber or All Weather Galvanized Grip Strut
- Spare Tire and Mount
- Extension Intervals to Customer Spec
- Solar Charged Breakaway Kit
- Quick-Rotate Swivel Jack
- 16" Long 6-Bolt Hitch Extension (w/ 52" Safety Chains and Breakaway Cable Extension)
- 3" Lunette Eye
- All Stainless Steel Fasteners (1/2" and under)
- Anti-Skid/Anti-Glare Sand Paint on all Walking Surfaces
- Various Trailer Light Plugs (Customer Choice)
- Truck-Lite Lighting
- Lug Nut Indicators

## **OPTIONAL LIGHT BAR**

- All TIG Welded Aluminum w/ Claw-Tooth for Superior Grip
- Contains (4) Four 4" Stop/Turn / Tail Rubber Mounted Sealed Beam LED Lights
- (3) Three Center ID Marker Lights
- (2) Two Side Marker Lights
- 7-Way REMOVABLE, DOUBLE ENDED NON-HARD WIRED Light Plug (to prevent yank-out damage and for easy maintenance) (7-Way ILO 4-Way is easier to source and more readily available for you)
- 35' Standard Electric Cable Length with a 7-Way Connector Plug



<b>UNLESS OTHERWISE SPECIFIED:</b> DIMENSIONS ARE IN INCHES TOLERANCE LIMITS FINISH WEIGHT PER FT. LBS		<b>PT24 / PT30</b> PART NO. 411-000000	
MATERIAL:		TITLE:	
FINISH:		DATE: 10/28/2022	
WEIGHT PER FT.: LBS		SHEET 2 OF 2	
DRAWING NOT TO SCALE		DATE: 10/28/2022	

**REELSTRONG**  
**UTILITY FLUET**  
 882 S. Claque Rd., Mahan, PA 17245  
 V. 484-881-3048 F. 888-380-3932 info@reelstrongfluet.com

PROPRIETARY AND CONFIDENTIAL  
 THE INFORMATION CONTAINED IN THIS DRAWING IS THE SOLE PROPERTY OF REELSTRONG UTILITY FLUET, INC. AND IS TO BE USED ONLY IN PART OR AS A WHOLE WITHOUT THE WRITTEN PERMISSION OF REELSTRONG UTILITY FLUET, INC. IS PROHIBITED.

