

# **REELSTRONG<sup>®</sup>**

## **UTILITY FLEET**

### **PL-2RT POWERLOCK™ REEL TRAILER SPECS**



#### **LOWEST TOTAL COST OF OWNERSHIP (TCO) FROM:**

- **LIFETIME WARRANTY PINLESS POWERLOCK™** Reel Bar Securement
- **INDUSTRY LEADING 20" OVERSIZED TURRET BEARING**
- **250K Axial, 90K ft/lbs Moment Load Lockable on 3 Degree Intervals**
- **OPEN TOP, "NON ENCAPSULATED" NYLATRON BEARING SADDLE** (low-coefficient of friction). **OPEN TOP = LESS FRICTION/LOW MAINTENANCE and EASIER PAY-OUT.**
- **No Pins or Cotters to Secure Reel Bar** (*most critical safety point*)
- **Yellow Zinc Electro-Plated and Stainless Precision Machined Components**
- **PRACTICAL:** No Expensive, Unnecessary Bronze Components, yet we Don't Cut Corners and Provide Premium, Heavy Duty, Top-Quality Latches, Hardware, Fittings and Components.

**BUILT FOR SAFETY. BUILT FOR SPEED. BUILT TO LAST.**

## **CAPACITIES**

- PL-2RT5: 18,400 lbs. GVWR @ 15% Tongue Weight
- PL-2RT7: 22,100 lbs. GVWR @ 15% Tongue Weight

## **AXLES**

- PL-2RT5: Tandem 8K lbs. Torsion
- PL-2RT7: Tandem 10K lbs. Sprung

## **WHEELS**

- PL-2RT5: (4) 17.5 x 6.75 HC / 8 on 6.5 BC w/ 0.19 Inset
- PL-2RT7: (4) 17.5 x 6.75 HC / 8 on 6.5 BC w/ 0.19 Inset

## **TIRES**

- PL-2RT5: (4) ST-215/75R17.5 LR-H Tires
- PL-2RT7: (4) ST-215/75R17.5 LR-H Tires

## **BRAKES**

- PL-2RT5: 12.25" x 3.38" Electric w/ Safety Breakaway Kit
- PL-2RT7: 12.25" x 3.38" Electric w/ Safety Breakaway Kit

## **PAYLOAD: ALL FINAL PAYLOADS BASED ON CHOSEN MODEL AND OPTIONS**

### **REEL WEIGHT (PAYLOAD)**

- PL-2RT5: 10,000 lbs. Approx. (5,000 lbs. Per Turret)
- PL-2RT7: 14,000 lbs. Approx. (7,000 lbs. Per Turret)

**[ALL REELS CLEAR EACH OTHER UPON ROTATION. COMPARE TO COMPETITION. SHORTER VERSION AVAILABLE](#)**

### **CURB WEIGHT:**

- PL-2RT5: 5,850 lbs. Approx.
- PL-2RT7: 6,550 lbs. Approx.

*Trailer Weight will Vary with Options & Finishes Chosen.*

**REEL DIA:** (2) 72" Maximum

**REEL WIDTH:** 54" Maximum

**REEL BAR DIA:** 2.5"

**LENGTH:** 252" Approx

## STANDARD FEATURES

- **PINLESS POWERLOCK™** **LIFETIME WARRANTY** **VIRTUALLY ZERO MAINTENANCE** Yellow Zinc Electroplated
- **INDUSTRY LEADING 20" OVERSIZED TURRET BEARING w/ 250K Axial, 90K ft/lbs Moment Load Lockable on 3 Deg. Intervals**
- **OPEN TOP, "NON ENCAPSULATED" NYLATRON BEARING SADDLE** (low-coefficient of friction). OPEN TOP = LESS FRICTION/LOW MAINTENANCE and EASIER PAY-OUT. (Haven't Replaced a Saddle in 14 Years)
- Oil Bath Hubs (Greaseable Option All)
- Electric Brakes
- Wheel Chock Holders
- Removable Turrets to Turn Trailer into Flatbed, if Needed.
- **Three (3) POINT STEPS AND HANDHOLDS STANDARD**

## STANDARD TRAILER BODY

- 8" X 4" X ¼" Frame
- 6-Position Adjustable Hitch
- ½" X 36" GR70 Yellow Zinc Safety Chains with Hooks
- 12,000 lbs. Static Front Jack w/ Spring Return
- (2) Rear 8,000 lbs. Static Stabilizer Jacks w/ Spring Return
- Ground Lug: Copper Alloy Star Washer Bolted to Frame (Welded Optional)
- Fenders: ½" Fabricated Diamond Plate

## WIRING

- DOT / ICC-- FMVSS / CMVSS Approved LED ULTRA- HIGH VISIBILITY 180 DEGREE BULLET Marker and Clearance Lights
- LED Sealed Beam Rubber Mounted Stop, Turn, Tail and Marker Lights
- Breakaway Kit with Absorbed Glass Mat (AGM) Battery
- 100% Sealed Heat-Shrunked Wiring Connections w/ Full Loom
- FULLY PROTECTED 7 or 6 Way Female Plug acts as Junction Box Recessed in FRAME RAIL. No Easily Damaged Plastic Junction Boxes

## PAINT

- Biodegradable Pretreat Acid Cleaning (Superior to re-used sandblasting material that can impregnate metals with oil)
- Seams Caulked
- Rust Preventative 2-Part Epoxy Primer
- Two-Part Polyurethane Topcoats (2 topcoats)
- Standard Colors: White and CAT Yellow (Custom Available)

## **OPTIONS**

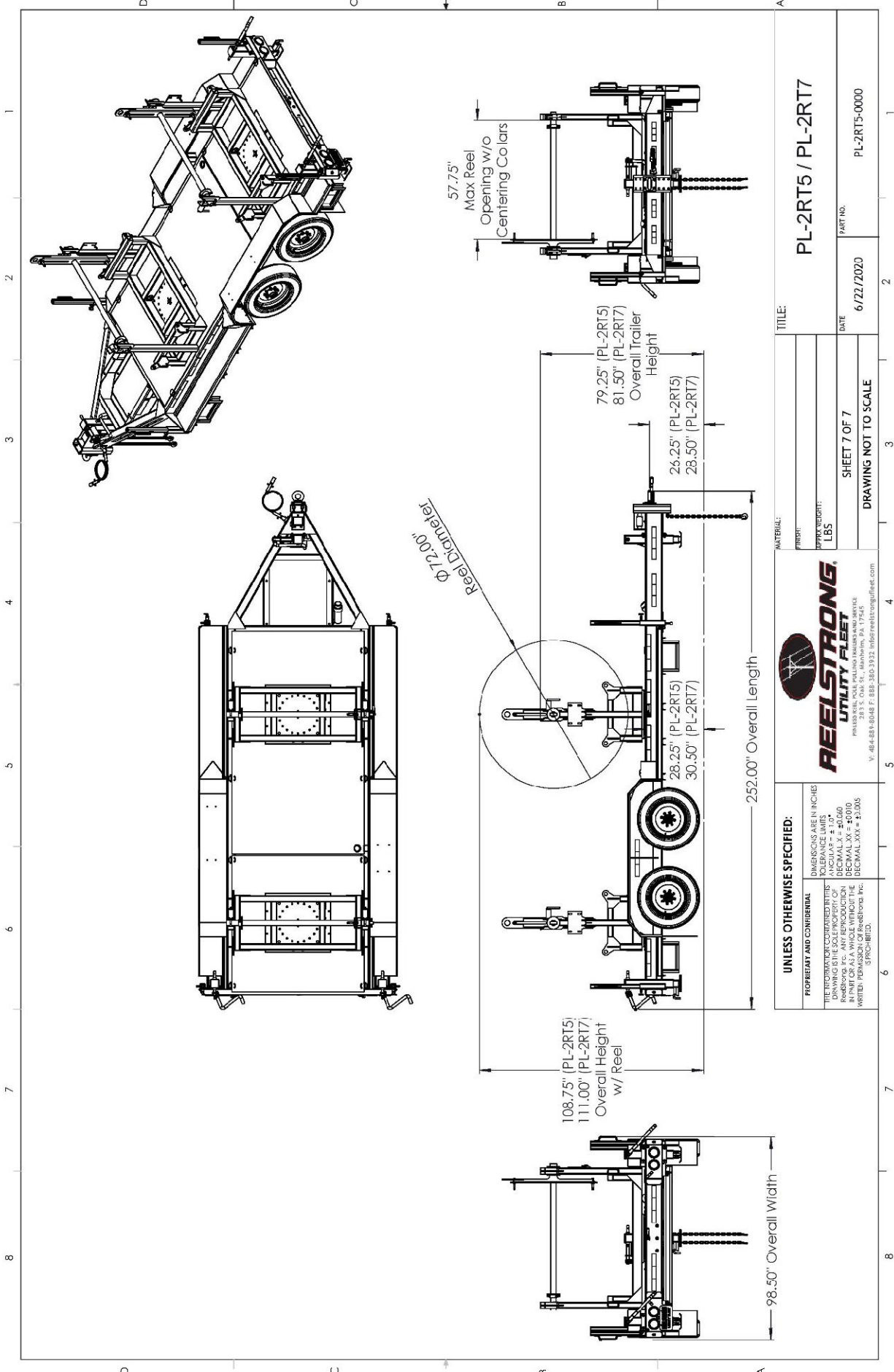
- 13 HP HONDA Engine Hydraulic Power Pack Comes STANDARD w/ ENGINE COVER, 15 Gallon Reservoir, Replaceable Oil Filter, Pressure Gauge and Solar Fade Resistant Plastic Control Placard. (Electric Start Optional)
- Ten (10) Year Galvanized Structural Warranty (2-Year Painted)
- Spare Tire and Mount
- 3,300 ft/lbs Torque Hydraulic Take-up Retriever. (Motor Spooled w/ Reel Brake ILO Cross-Over Relief Valve for Smooth Instant Reel Stoppage)
- 2-7/16" Universal Adapter for Capstan and Power Reel Attachments
- Hydraulic Hose Rotary Swivel Union (*manages & eliminates loose hydraulic hoses*)
- 7 Inch General Purpose Capstan
- Collapsible Power Reel
- Rotating Arbor Ground
- 16" Bronze Alloy Ventilated Reel Brake w/ Ventilated Guard
- 16" Long 6-Bolt Hitch Extension (w/ 52" Safety Chains and Breakaway Cable Extension)
- 3" Lunette Eye
- All Stainless Steel Fasteners (1/2" and under)
- Anti-Skid/Anti-Glare Sand Paint on all Walking Surfaces
- Various Trailer Light Plugs (Customer Choice)
- Aluminum or Steel Toolbox
- Air Brakes w/ ABS
- Wiring Connections Soldered and Sealed w/ Heat Shrink Tubing
- Plug-and-Play Sealco Wiring Harness
- Wheel Chocks: Rubber or All Weather Galvanized Grip Strut
- Solar Charged Breakaway Kit
- Strobe Warning Lights
- Hydraulic Front Jack
- Hydraulic Rear and Intermediate Outriggers
- Telescoping Rear and Intermediate Outriggers
- Truck-Lite Lighting
- Lug Nut Indicators

## **OPTIONAL PREMIUM ROLLER PACKAGE**

- OVD Fairlead Rollers (One "1" Per Turret)
- URD Fairlead Rollers (Two "2" Per Turret)
- OVD/URD Cable Gathering Windows
- URD Arching/Traversing Fairlead

## **OPTIONAL ECONOMY ROLLER PACKAGE**

- OVD Fairlead Rollers (One "1" Per Turret)
- URD Fairlead Rollers (Two "2" Per Turret)
- OVD/URD Cable Gathering Windows
- URD Cable Gathering Window



<b>UNLESS OTHERWISE SPECIFIED:</b> DIMENSIONS ARE IN INCHES TOLERANCE LIMITS DECIMAL XX = ±0.060 DECIMAL XX = ±0.010 DECIMAL XXX = ±0.005 WRITTEN PERMISSION OF Reelstrong, Inc. IS REQUIRED.		<b>REELSTRONG</b> <b>UTILITY FLEET</b> 283 S. Oak St., Manasquan, PA 17545 P: 484-881-8048 F: 888-380-3332 info@reelstrong.com	
<b>TITLE:</b> PL-2RT5 / PL-2RT7		<b>PART NO.:</b> PL-2RT5-0000	
<b>MATERIAL:</b> FRUIT: APPROX WEIGHT: LBS		<b>DATE:</b> 6/22/2020	
<b>SHEET 7 OF 7</b> <b>DRAWING NOT TO SCALE</b>		<b>DATE:</b> 6/22/2020	