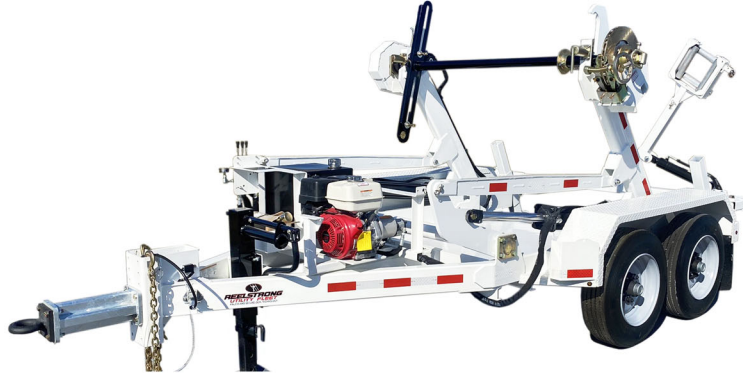


REELSTRONG[®]

UTILITY FLEET

CLD POWERLOCK™ REEL TRAILER SPECS



LOWEST TOTAL COST OF OWNERSHIP (TCO) From:

- **LIFETIME WARRANTY PINLESS POWERLOCK™** Reel Bar Securement
- No Pins or Cotters to Secure Reel Bar (*most critical safety point*).
- Fastest, Safest Loading, Unloading and Deployment Reduces Labor.
- Yellow Zinc Electro-Plated and Stainless Precision Machined Components
- **PRACTICAL:** No Expensive, Unnecessary Bronze Components, yet we Don't Cut Corners and Provide Premium, Heavy Duty, Top-Quality Latches, Hardware, Fittings and Components.

BUILT FOR SAFETY. BUILT FOR SPEED. BUILT TO LAST.

CAPACITIES

- CLD6: 9,200 lbs. GVWR @ 15% Tongue Weight
- CLD14: 22,100 lbs. GVWR @ 15% Tongue Weight
- CLD20: 27,450 lbs. GVWR @ 14.38% Tongue Weight

AXLES

- CLD6: Single 8K lbs. Torsion
- CLD14: Tandem 10K lbs. Torsion
- CLD20: Triple 8K lbs. Torsion

WHEELS

- CLD6: (2) 17.5 x 6.75 HC / 8 on 6.5 BC w/ 0.19 Inset
- CLD14: (4) 17.5 x 6.75 HC / 8 on 6.5 BC w/ 0.19 Inset
- CLD20: (6) 17.5 x 6.75 HC / 8 on 6.5 BC w/ 0.19 Inset

TIRES

- CLD6: (2) 215/75R17.5 LR-H Tires
- CLD14: (4) 215/75R17.5 LR-H Tires
- CLD20: (6) 215/75R17.5 LR-H Tires

BRAKES

- CLD6: 12.25" x 3.38" Electric w/ Safety Breakaway Kit
- CLD14: 12.25" x 3.38" Electric w/ Safety Breakaway Kit
- CLD20: 12.25" x 3.38" Electric w/ Safety Breakaway Kit

PAYLOAD: ALL FINAL PAYLOADS BASED ON CHOSEN MODEL AND OPTIONS

REEL WEIGHT (PAYLOAD)

- CLD6: 6,000 lbs. Approx.
- CLD14: 14,000 lbs. Approx.
- CLD20: 20,000 lbs. Approx.

REEL DIAMETER:

- CLD6: 96"
- CLD14: 108"
- CLD20: 120"

REEL WIDTH: 60" Max

REEL SHAFT DIAMETER:

- CLD6: 2.50"
- CLD14: 3"
- CLD20: 3"

OVERALL LENGTH:

- CLD6: 134.00"
- CLD14: 193.00"
- CLD20: 199.00"

OVERALL WIDTH: 102"**OVERALL WEIGHT:**

- CLD6: 3,050 lbs. Approx.
- CLD14: 5,050 lbs. Approx.
- CLD20: 6,200 lbs. Approx.

Actual Trailer Weight will Vary with Options & Finishes Chosen.

STANDARD FEATURES

- **LIFETIME WARRANTY PINLESS AUTOLOCK™**
- Oil Bath Hubs (Greaseable Option All)
- Electric Brakes
- Wheel Chock Holders
- Dexter Axles
- OPEN TOP, "NON ENCAPSULATED" NYLATRON BEARING SADDLE (low-coefficient of friction). OPEN TOP = LESS FRICTION/LOW MAINTENANCE and EASIER PAY-OUT. (Haven't Replaced a Saddle due to Wear in 13 Years)
- Wheel Chock Holders
- 6D-Rings Front, Center and Rear for Cargo / Transformers (CLD6/CLD14)
- Electric Over Hydraulic (CLD6)

STANDARD TRAILER BODY

- 6" X 3" X ¼" Frame (CLD6/CLD14)
- 8" X 3" X ¼" Frame (CLD20)
- 6-Position Adjustable Hitch
- ¾" X 36" GR70 Yellow Zinc Safety Chains with Hooks
- ½" X 36" GR70 Yellow Zinc Safety Chains with Hooks (CLD20)
- Standard Cargo Area (CLD6/CLD14)
- 8,000 lbs. Static Front Jack (CLD6)
- 12,000 lbs. Static Front Jack w/ Spring Return (CLD14/CLD20)
- Ground Lug: Copper Alloy Star Washer Bolted to Frame (Welded Optional)

LIGHTS/WIRING

- Fenders: ⅛" Fabricated Diamond Plate
- Quick Deploy Outriggers (no loose pins) (CLD20)
- DOT Reflective Conspicuity Tape

LIGHTS/WIRING

- DOT / ICC-- FMVSS / CMVSS Approved LED ULTRA- HIGH VISIBILITY 180 DEGREE BULLET Marker and Clearance Lights
- LED Sealed Beam Rubber Mounted Stop, Turn, Tail and Marker Lights
- 100% Sealed Heat-Shrunked Wiring Connections w/ Full Loom
- Breakaway Kit with Absorbed Glass Mat (AGM) Battery
- FULLY PROTECTED 7 or 6 Way Female Plug acts as Junction Box Recessed in FRAME RAIL. No Easily Damaged Plastic Junction Boxes!

PAINT

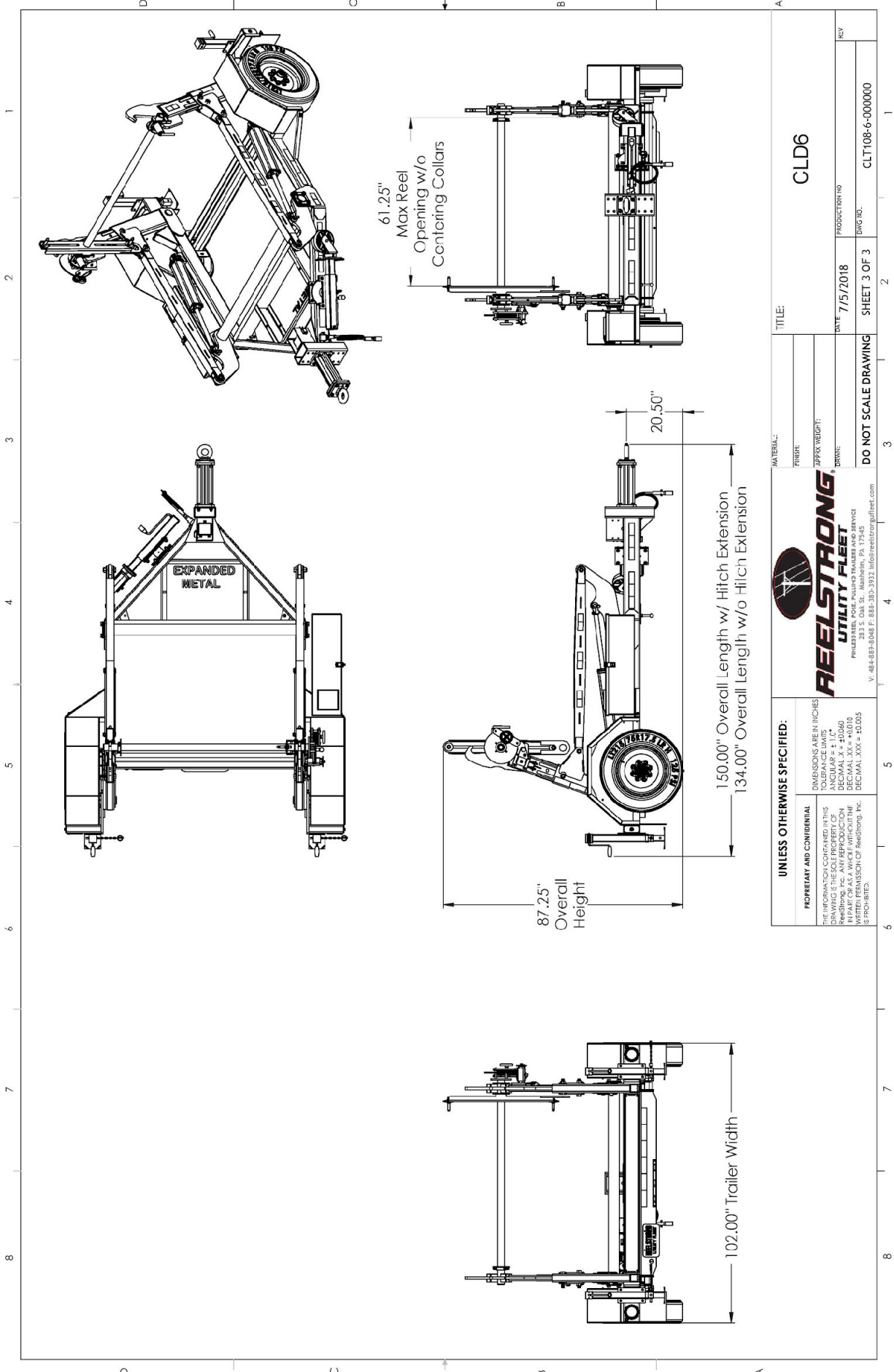
- Biodegradable Pretreat Acid Cleaning (Superior to re-used sandblasting material that can impregnate metals with oil)
- Seams Caulked
- Rust Preventative 2-Part Epoxy Primer
- Two-Part Polyurethane Topcoats (2 topcoats)
- Standard Colors: White and CAT Yellow (Custom Available)

OPTIONS

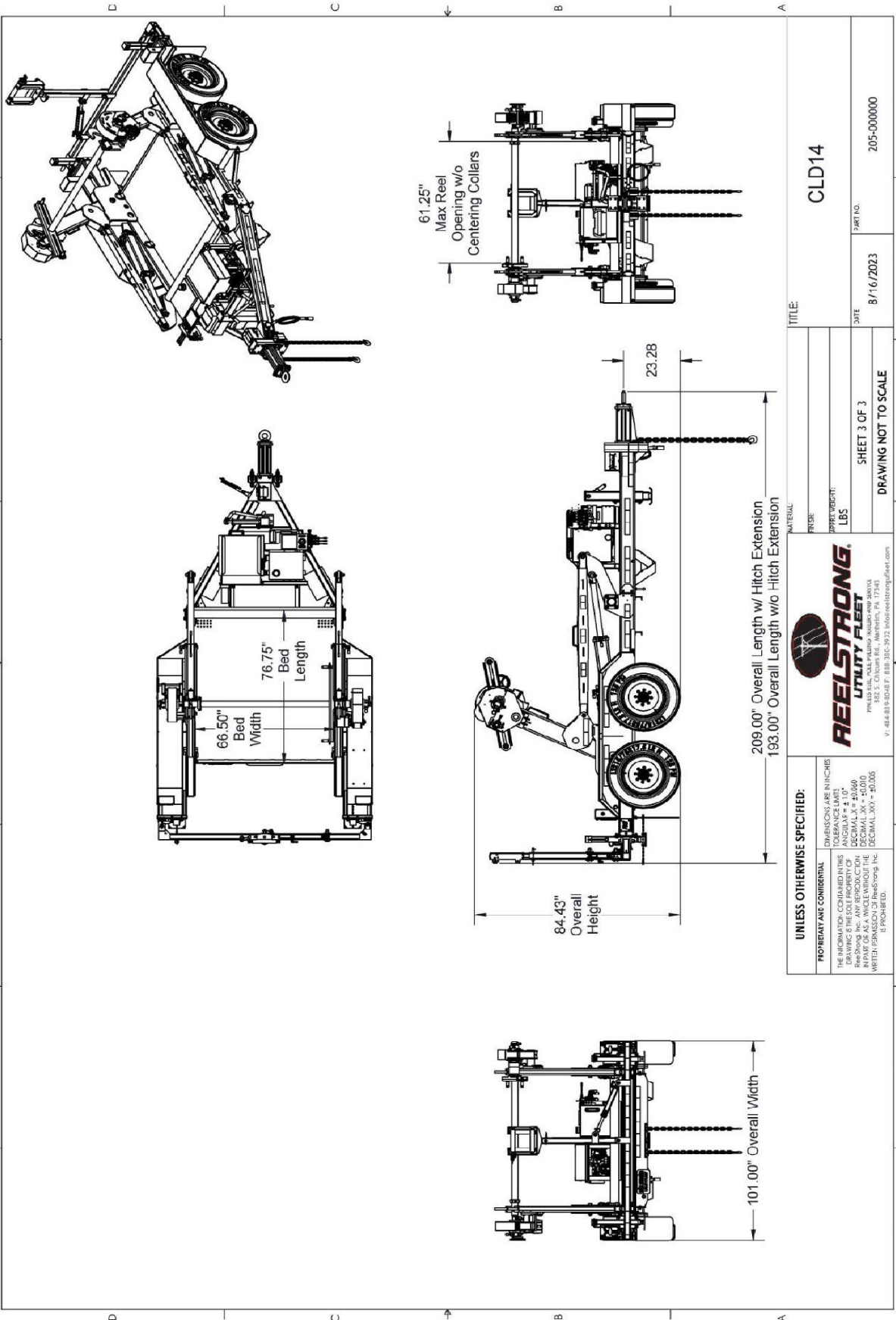
- 13 HP HONDA Engine Hydraulic Power Pack Comes STANDARD w/ ENGINE COVER, 15 Gallon Reservoir, Replaceable Oil Filter, Pressure Gauge and Solar Fade Resistant Plastic Control Placard. (Electric Start Optional)
- Ten (10) Year Galvanized Structural Warranty (2-Year Painted)
- Aluminum Engine Cover
- 16" Bronze Alloy TRU-STOP Ventilated Reel Brake w/ Ventilated Guard
- 3,300 ft/lbs Torque Hydraulic Take-up Retriever. (Motor Spooled w/ Reel Brake ILO Cross-Over Relief Valve for Smooth Instant Reel Stoppage)
- 2-7/16" Universal Adapter for Capstan, Collapsible Reel or Slip-Clutch Fiber-Optic Reels
- 7 Inch General Purpose Capstan
- Collapsible Power Reel
- Slip-Clutch Fiber-Optic Pulling Capstan
- Cable Rewind Leveler
- Rotating Arbor Ground
- Aluminum or Stainless Toolbox
- Air Brakes w/ ABS
- 16" Long 6-Bolt Hitch Extension (w/ 52" Safety Chains and Breakaway Cable Extension)
- 3" Lunette Eye
- Wiring Connections Soldered and Sealed w/ Heat Shrink Tubing
- Plug-and-Play Sealco Wiring Harness
- **Wheel Chocks:** Rubber or All Weather Galvanized Grip Strut
- Spare Tire and Mount
- Solar Charged Breakaway Kit
- 12" Caster Wheel for Tongue Jack
- Strobe Warning Lights
- All Stainless Steel Fasteners (1/2" and under)

OPTIONS (cont.)

- Auxiliary Hydraulic Quick-Connect Ports
- Various Trailer Light Plugs (Customer Choice)
- Custom Paint
- Custom Specification
- Truck-Lite Lighting
- Lug Nut Indicators

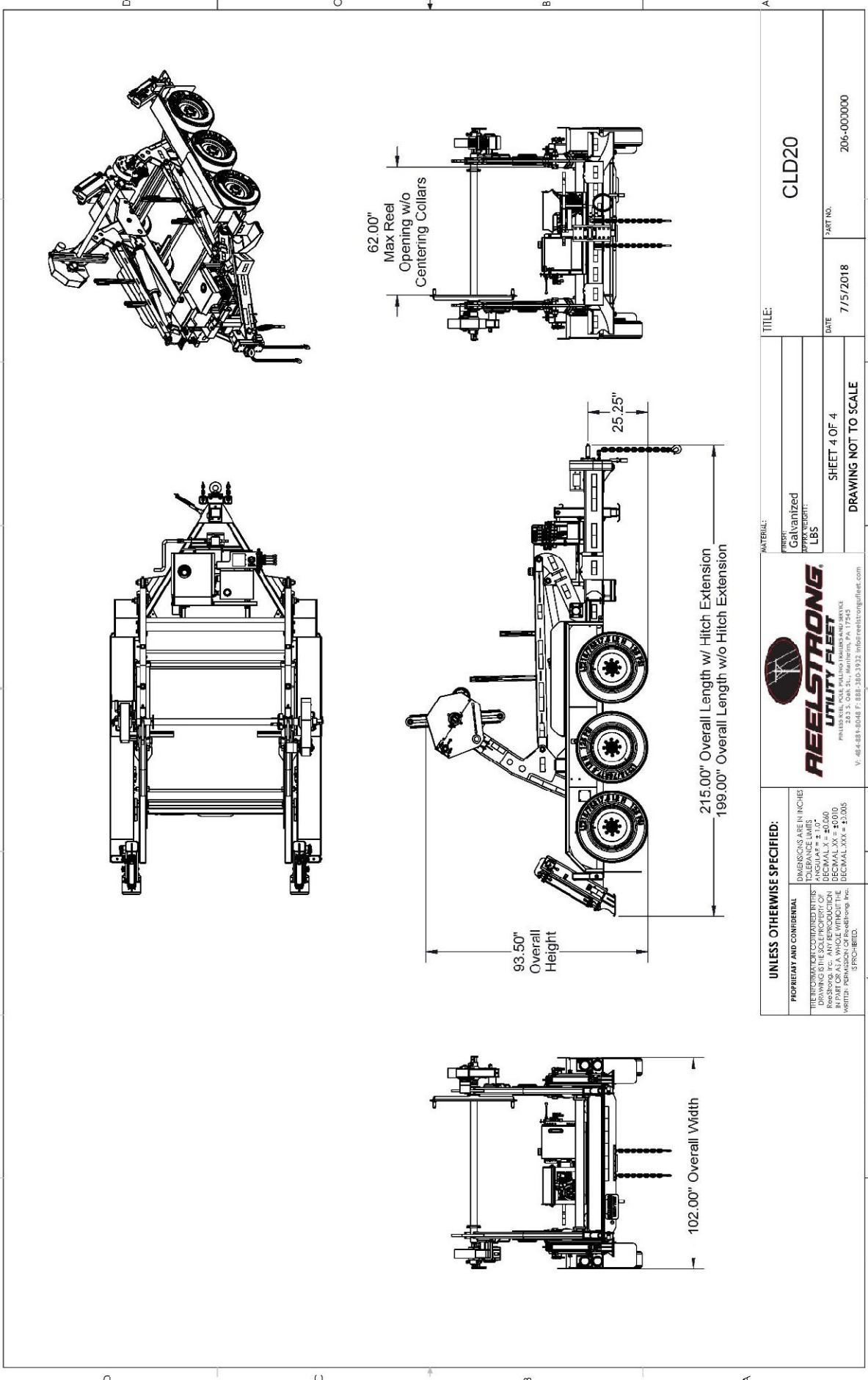


UNLESS OTHERWISE SPECIFIED: DIMENSIONS ARE IN INCHES TOLERANCE LIMITS FINISHES ARE TO BE SPECIFIED DECIMAL .XX = ±0.0080 DECIMAL .XXX = ±0.0010 DECIMAL .XXX = ±0.0015 UNLESS OTHERWISE SPECIFIED, ALL DIMENSIONS ARE TO BE HIDDEN UNLESS OTHERWISE SPECIFIED.		REELSTRONG UTILITY FLEET PHILADELPHIA, PA. 19104 283 S. Oak St., Manheim, PA 17545 P. 484-889-8048 F. 888-393-3932 info@reelstrongfleet.com	
PROPRIETARY AND CONFIDENTIAL THE INFORMATION CONTAINED IN THIS DRAWING IS THE PROPERTY OF REELSTRONG UTILITY FLEET. IT IS TO BE USED ONLY IN PART OR AS A WHOLE WITHOUT THE WRITTEN PERMISSION OF REELSTRONG, INC. © 2016.		DO NOT SCALE DRAWING	
MATERIAL: _____ FINISH: _____ APPROX WEIGHT: _____ DRAWN: _____		TITLE: CLD6	
DATE: 7/5/2018		PRODUCTION NO: _____ DWG NO: _____	
SHEET 3 OF 3		REV: _____ CLT108-6-000000	



UNLESS OTHERWISE SPECIFIED: DIMENSIONS ARE IN INCHES TOLERANCES ARE: FRACTIONS: CONSIDERABLE DECIMALS: 1/16" (0.0625) ANGULARS: 4' 10" REE-STRONG, INC. ANY REPRODUCTION WITHOUT PERMISSION IS PROHIBITED. REE-STRONG, INC. 17145 HUNTERS LANE, HUNTERS GREEN, PA 17145 TEL: 717-326-3972 FAX: 717-326-3973 WWW.REE-STRONG.COM		REELSTRONG UTILITY FLEET P.O. BOX 100, HUNTERS GREEN, PA 17145 TEL: 717-326-3972 FAX: 717-326-3973 WWW.REE-STRONG.COM	
TITLE: ULD14		PART NO.: 205-000000	
DATE: 8/16/2023		SHEET 3 OF 3	
DRAWING NOT TO SCALE			

8 7 6 5 4 3 2 1



<p>UNLESS OTHERWISE SPECIFIED:</p> <p>DIMENSIONS ARE IN INCHES</p> <p>FRACTIONS TO NEAREST 1/32</p> <p>DECIMALS TO NEAREST 0.005</p> <p>DECIMAL XX" = #0.010</p> <p>DECIMAL XXX" = #0.005</p> <p>WRITE PERMISSION OF Reelstrong, Inc. IS REQUIRED.</p>		<p>REELSTRONG UTILITY FLEET</p> <p>PHILADELPHIA, PA 19154 283 S. Oak St., Manheim, PA 17345 P. 48-481-8048 F. 888-380-9332 info@reelstrong.com</p>	
<p>PROPRIETARY AND CONFIDENTIAL</p> <p>THIS DRAWING OR CONTAINED HEREIN IS THE SOLE PROPERTY OF REELSTRONG, INC. IN PART OR AS A WHOLE WITHOUT THE WRITTEN PERMISSION OF Reelstrong, Inc. IS PROHIBITED.</p>		<p>TITLE: CLD20</p>	<p>PART NO. 206-003000</p>
<p>MATERIAL: Galvanized LBS</p>		<p>DATE: 7/5/2018</p>	<p>SHEET 4 OF 4</p>
<p>DRAWING NOT TO SCALE</p>			