

# **REELSTRONG®**

## **UTILITY FLEET**

### **GENERAL DUTY PT10 LIFETIME WARRANTY MEGA-ROLLER™ w/ SELF-SECURING TONGUE-LOCK™ POLE TRAILER SPECS**



#### **LOWEST TOTAL COST OF OWNERSHIP (TCO) FROM:**

- **LIFETIME WARRANTY MEGA-ROLLER™** (6 Roller Patent Pending) w/ Bronze Super Alloy Bearings Provides a Smooth “ONE MAN OPERATION” of the Tongue. NO TRUCK NEEDED to Extend or Retract. NO WEAR PADS TO MAINTAIN OR REPLACE. VIRTUALLY ZERO MAINTENANCE
- SELF-SECURING SECURELOCK™ Tongue-lock. No Pins to Lose.
- **PRACTICAL:** No Expensive, Unnecessary Bronze Components, yet we Don't Cut Corners and Provide Premium, Heavy Duty, Top-Quality Latches, Hardware, Fittings and Components.
- Non-Binding/Freezing EZ Slide Pole Centering Stanchions. Replaces Rusted/Seized Lever Lock Stanchions and Expensive Bronze.
- Heavy Duty yet Simple 5” H-Beam Pole Seats

**BUILT FOR SAFETY. BUILT FOR SPEED. BUILT TO LAST.**

**CAPACITIES:** 11,500 lbs. GVWR @ 15% Tongue Weight

**AXLES:** 10K lbs. Sprung

**WHEELS:** (4) 16 x 6K / 8 on 6.5 BC w/ 5.50 Outset

**TIRES:** (4) ST-235/85R16 LR-E Tires

**BRAKES:** 12.25" x 3.38" Electric w/ Safety Breakaway Kit

**PAYLOAD: ALL FINAL PAYLOADS BASED ON CHOSEN MODEL AND OPTIONS**

**POLE WEIGHT (PAYLOAD):** 8,300 lbs. Approx.

**RETRACTED / EXTENDED LENGTH:** 21' / 26' / 31'

**OVERALL WIDTH:** See Drawings Below

**OVERALL WEIGHT:** 3,200 lbs. Approx.

*Actual Trailer Weight will Vary with Options & Finishes Chosen*

**POLE SEAT HEIGHT:** 37.25"

**CARGO BED:** 85.50" X 43.75" (Customizable)

#### **STANDARD FEATURES**

- **LIFETIME WARRANTY MEGA-ROLLER™ SIX ROLLER SYSTEM** Oversized Precision Rollers w/ Bronze Alloy Bearings (NO WEAR PADS TO REPLACE! ULTRA-EASY TO EXTEND/RETRACT)
- **SELF-SECURING SECURELOCK™** Tongue Lock (No Loose Pin)
- Oil Bath Hubs (Greaseable Option All)
- Electric Brakes
- Adjustable Spring Pads
- Slipper Springs
- Reinforced Spring Hangers
- **NON-BINDING/FREEZING EZ-SLIDE POLE-CENTERING STANCHIONS**
- Wheel Chock Holders
- Winch Binders w/ Ratcheting Breaker Bar (**BOA Crank Winch Optional**)
- Pole Rests: 5" H Beam (Level Lock Stanchions Optional)
- Front Pole Rests: 5" Sq Tube

## **STANDARD TRAILER BODY**

- Heavy Duty 5" X 5" X ¼" Wall Male Extendable Tongue
- Heavy Duty 6" X 6" X ¼" Wall Female Structural Tube
- Base Frame: 7" Fish-Plated C-Channel
- 7-Position Adjustable Hitch
- ¾" X 36" GR70 Yellow Zinc Safety Chains with Hooks
- 1/2" Zinc Plated GR70 Safety Chains for Models Exceeding 18,000 lbs. GVWR
- Removable Male Extension Tongue
- Standard Cargo Area
- 12,000 lbs. Static Front Jack w/ Spring Return

## **FRONT POLE SEAT OPTIONS (Mounted on Male Tongue)**

- 48" Wide 5" Sq Tube Pole Seat (Standard)
- 60" Wide 5" H-BEAM Pole Seat (Optional)

## **WIRING**

- DOT / ICC-- FMVSS / CMVSS Approved LED ULTRA- HIGH VISIBILITY 180 DEGREE BULLET Marker and Clearance Lights
- LED Sealed Beam Rubber Mounted Stop, Turn, Tail and Marker Lights
- **Internal Cat Track** Protects Wiring (and air brakes if applicable)
- Removable Rear Access Door to Access Cat Track and Wiring
- Breakaway Kit with Absorbed Glass Mat (AGM) Battery
- 100% Sealed Heat-Shrunked Wiring Connections w/ Full Loom
- FULLY PROTECTED 7 or 6 Way Female Plug acts as Junction Box Recessed in FRAME RAIL. No Easily Damaged Plastic Junction Boxes

## **PAINT**

- Biodegradable Pretreat Acid Cleaning (Superior to re-used sandblasting material that can impregnate metals with oil)
- Seams Caulked
- Rust Preventative 2-Part Epoxy Primer
- Two-Part Polyurethane Topcoats (2 topcoats)
- Standard Colors: White and CAT Yellow (Custom Available)

## **OPTIONS**

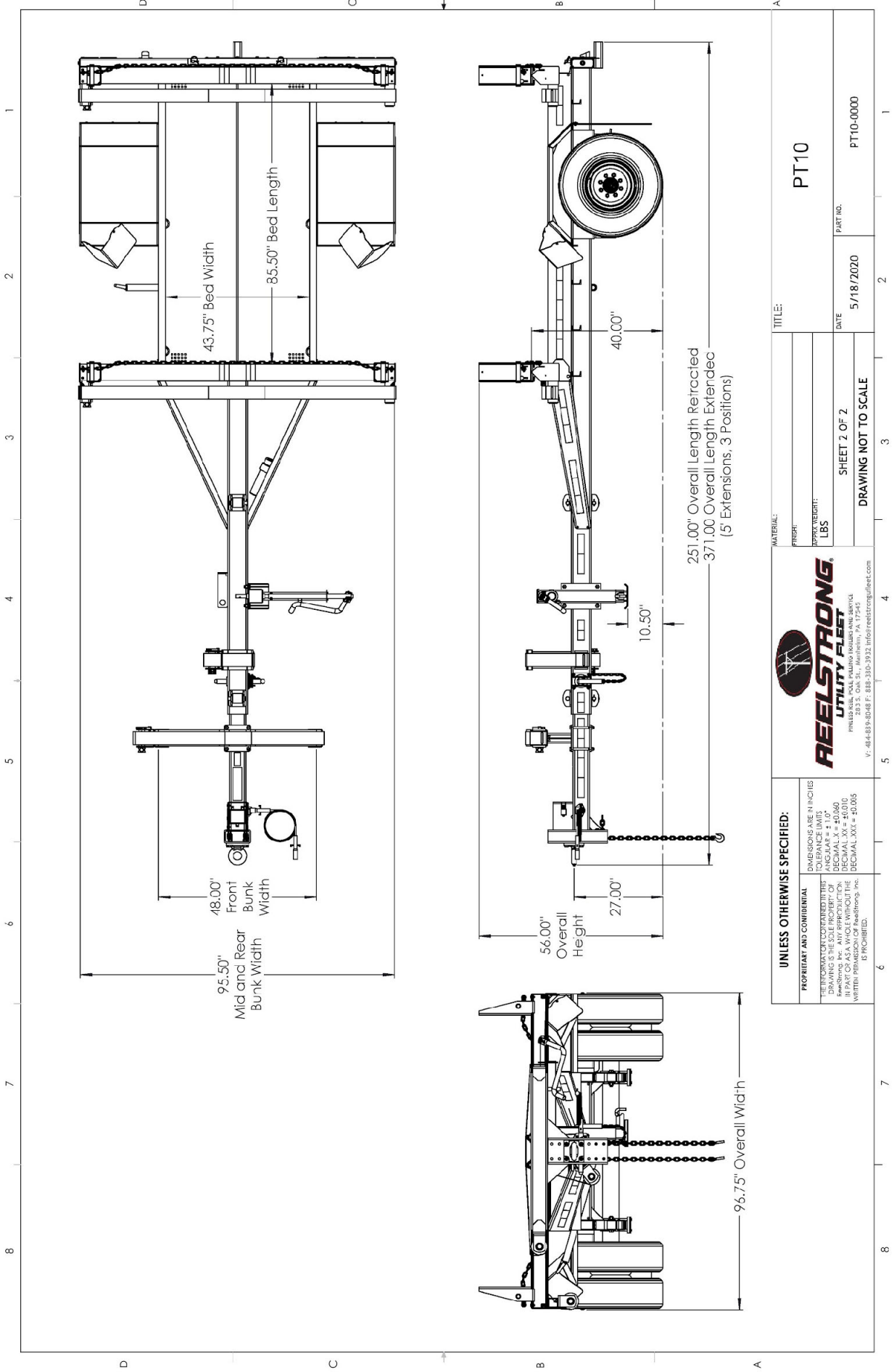
- 10-Year Galvanized Structural Warranty (2-Year Painted)
- BOA Hand Operated Ratcheting Pole Strap Winch for SAFETY and Ultra Ease-of-use
- Air Brakes w/ ABS
- Lever Lock Stanchions
- Wiring Connections Soldered and Sealed w/ Heat Shrink Tubing
- Plug-and-Play Sealco Wiring Harness
- Wheel Chocks: Rubber or All Weather Galvanized Grip Strut
- Spare Tire and Mount
- Extension Intervals to Customer Spec

### **OPTIONS (cont.)**

- Solar Charged Breakaway Kit
- Quick-Rotate Swivel Jack
- 16" Long 6-Bolt Hitch Extension (w/ 52" Safety Chains and Breakaway Cable Extension)
- 3" Lunette Eye
- All Stainless Steel Fasteners (½" and under)
- Anti-Skid / Anti-Glare Sand Paint on all Walking Surfaces
- Various Trailer Light Plugs (Customer Choice)
- Spare Tire and Mount
- 6D-Rings Front, Center and Rear for Cargo / Transformers
- Front Removable / Adjustable Pole Seat Mounted on Front Male Tongue (Not Recommended)
- Extension Configurations: Customizable (additional / less extension increments available)
- Solar Charged Breakaway Kit
- Truck-Lite Lighting
- Lug Nut Indicators

### **OPTIONAL LIGHT BAR**

- All TIG Welded Aluminum CLAW-TOOTHED SECURED
- Contains (4) Four 4" Stop/Turn / Tail Rubber Mounted Sealed Beam LED Lights
- (3) Three Center ID Marker Lights
- (2) Two Side Marker Lights
- 4-Way Die Cast Connector
- 35' Standard Electric Cable Length with a 4-Way Connector Plug



<b>UNLESS OTHERWISE SPECIFIED:</b> DIMENSIONS ARE IN INCHES TOLERANCE LIMITS DECIMAL .XX = ±0.060 DECIMAL .XXX = ±0.010 DECIMAL .XXIV = ±0.005 WRITTEN PERMISSION OF Reelstrong, Inc. IS PROHIBITED.		<b>REELSTRONG</b> UTILITY FLIGHT 203 S. Oak St., Marlinton, PA 17949 P: 484-839-8048 F: 888-330-3932 info@reelstrong.com		MATERIAL: _____ FINISH: _____ APPROX WEIGHT: LBS		TITLE: PT10	
PROPRIETARY AND CONFIDENTIAL THE INFORMATION CONTAINED IN THIS DRAWING IS THE SOLE PROPERTY OF REELSTRONG, INC. IT IS TO BE USED IN PART OR AS A WHOLE WITHOUT THE WRITTEN PERMISSION OF Reelstrong, Inc. IS PROHIBITED.		SHEET 2 OF 2 DRAWING NOT TO SCALE		DATE: 5/18/2020		PART NO.: PT10-0000	