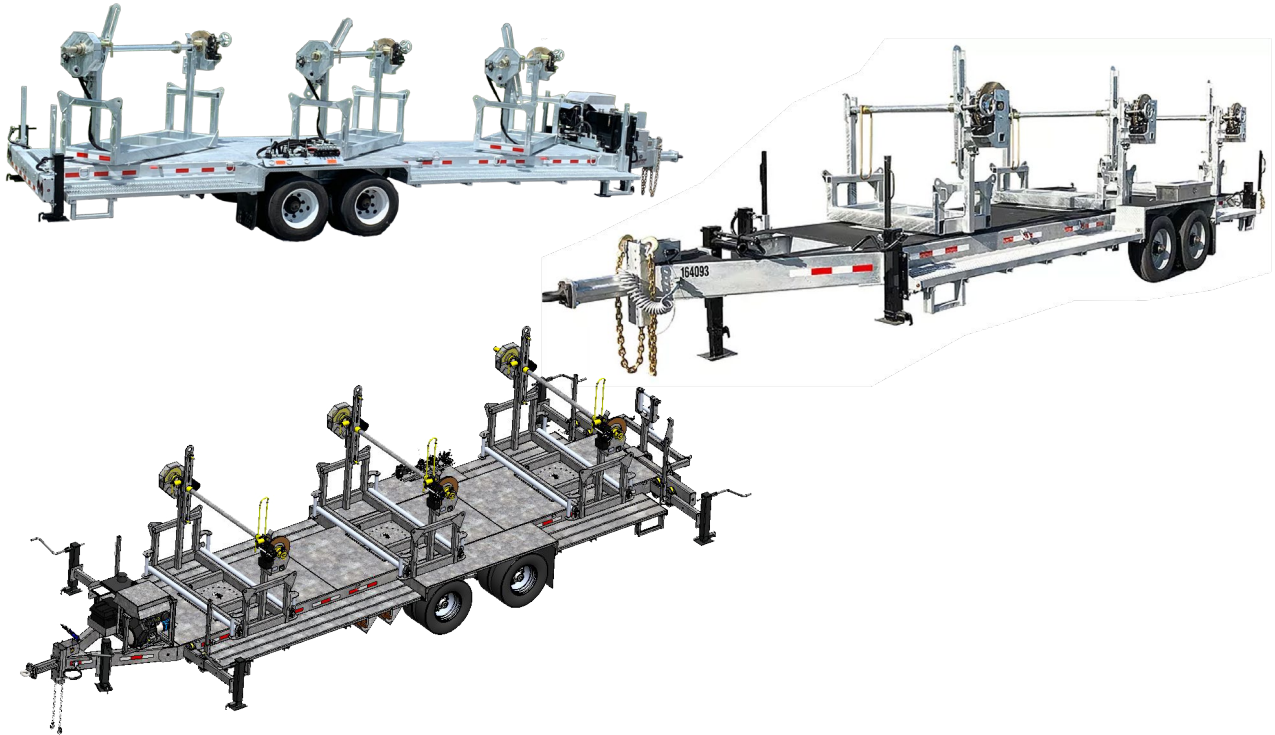




REELSTRONG[®]

UTILITY FLEET

PL-3RT POWERLOCK™ REEL TRAILER SPECS



LOWEST TOTAL COST OF OWNERSHIP (TCO) FROM:

- **LIFETIME WARRANTY PINLESS POWERLOCK™** Reel Bar Securement
- **INDUSTRY LEADING 20" OVERSIZED TURRET BEARING**
- 250K Axial, 90K ft/lbs Moment Load Lockable on 3 Degree Intervals
- **INDUSTRY LEADING 24" OVERSIZED TURRET BEARING (PL-3RT10)**
- Lockable on 3 Degree Intervals
- **OPEN TOP, "NON ENCAPSULATED" NYLATRON BEARING SADDLE** (low-coefficient of friction).
OPEN TOP = LESS FRICTION/LOW MAINTENANCE and EASIER PAY-OUT.
- No Pins or Cotters to Secure Reel Bar (*most critical safety point*)
- Yellow Zinc Electro-Plated and Stainless Precision Machined Components
- **PRACTICAL:** No Expensive, Unnecessary Bronze Components, yet we Don't Cut Corners and Provide Premium, Heavy Duty, Top-Quality Latches, Hardware, Fittings and Components.

BUILT FOR SAFETY. BUILT FOR SPEED. BUILT TO LAST.

CAPACITIES

- PL-3RT5: 27,600 lbs. GVWR @ 15% Tongue Weight
- PL-3RT7: 34,500 lbs. GVWR @ 15% Tongue Weight
- PL-3RT8: 51,750 lbs. GVWR @ 15% Tongue Weight
- PL-3RT10: 51,750 lbs. GVWR @ 15% Tongue Weight

AXLES

- PL-3RT5: Tandem 12K Sprung
- PL-3RT7: Tandem-Dual 15K Sprung
- PL-3RT8: Tandem-Dual 22.5K Sprung **AIR BRAKES REQUIRED**
- PL-3RT10: Tri-Dual 15K Sprung

WHEELS

- PL-3RT5: (4) 17.5 x 6.75 HC / 8 on 6.5 BC w/ 0.19 Inset
- PL-3RT7: (8) 17.5 x 6.75 HC / 8 on 275mm BC w/ 5.60 Outset
- PL-3RT8: (8) 17.5 x 6.75 HC / 8 on 275mm BC w/ 5.60 Outset
- PL-3RT10: (8) 17.5 x 6.75 HC / 8 on 275mm BC w/ 5.60 Outset

TIRES

- PL-3RT5: (4) ST-235/75R17.5 LR-J Tires
- PL-3RT7: (8) ST-215/75R17.5 LR-H Tires
- PL-3RT8: (8) ST-235/75R17.5 1LR-J Tires
- PL-3RT10: (8) ST-215/75R17.5 LR-H Tires

BRAKES

- PL-3RT5: 12.25" x 5.00" Electric
- PL-3RT7: 12.25" x 5.00" Electric
- PL-3RT8: 12.25" x 7.50" **AIR BRAKES REQUIRED**
- PL-3RT10: 12.25" x 5.00" Electric

PAYLOAD: ALL FINAL PAYLOADS BASED ON CHOSEN MODEL AND OPTIONS

REEL WEIGHT (PAYLOAD)

- PL-3RT5: 15,000 lbs. Approx. (5,000 lbs. Per Turret)
- PL-3RT7: 21,000 lbs. Approx. (7,000 lbs. Per Turret)
- PL-3RT8: 24,000 lbs. Approx. (8,000 lbs. Per Turret)
- PL-3RT10: 30,000 lbs. Approx. (10,000 lbs. Per Turret)

EXTRA PAYLOAD FOR CARGO AVAILABLE UPON REQUEST

REEL DIA

- PL-3RT5: 72" Max
- PL-3RT7: 84" Max
- PL-3RT8: 84" Max
- PL-3RT10: 84" Max

REEL WIDTH

- PL-3RT5: 54" Max
- PL-3RT7: 60" Max
- PL-3RT8: 60" Max
- PL-3RT10: 60" Max

REEL BAR DIA

- PL-3RT5: 2.5"
- PL-3RT7: 2.5"
- PL-3RT8: 2.5"
- PL-3RT10: 3.0"

ALL FINAL LENGTHS, WIDTHS, AND WEIGHTS ARE BASED ON CHOSEN MODEL AND OPTIONS

OVERALL LENGTH

- PL-3RT5: 364.75" Approx.
- PL-3RT7: 393.75" Approx.
- PL-3RT8: 393.75" Approx.
- PL-3RT10: 421.75" Approx.

ALL REELS CLEAR EACH OTHER UPON ROTATION. COMPARE TO COMPETITION. SHORTER VERSIONS AVAILABLE

WIDTH

- PL-3RT5: 96.75" Approx.
- PL-3RT7: 96.25" Approx.
- PL-3RT8: 96.25" Approx.
- PL-3RT10: 99.25" Approx.

CURB WEIGHT:

- PL-3RT5: 9,950 lbs. Approx.
- PL-3RT7: 10,950 lbs. Approx.
- PL-3RT8: 12,600 lbs. Approx.
- PL-3RT10: 14,850 lbs. Approx.

STANDARD FEATURES

- **PINLESS POWERLOCK™ LIFETIME WARRANTY VIRTUALLY ZERO MAINTENANCE** Yellow Zinc Electroplated
- **INDUSTRY LEADING 20" OVERSIZED TURRET BEARING w/ 250K Axial, 90K ft/lbs Moment Load Lockable on 3 Deg. Intervals**
- **OPEN TOP, "NON ENCAPSULATED" NYLATRON BEARING SADDLE** (low-coefficient of friction). OPEN TOP = LESS FRICTION/LOW MAINTENANCE and EASIER PAY-OUT. (Haven't Replaced a Saddle in 14 Years)

STANDARD FEATURES (cont.)

- Oil Bath Hubs (Greaseable Option All)
- Electric Brakes
- Wheel Chock Holders
- Removable Turrets to Turn Trailer into Flatbed, if Needed.
- **Three (3) POINT STEPS AND HANDHOLDS STANDARD**

STANDARD TRAILER BODY

- Heavy Duty 10" X 3" X ¼" Frame
- 8-Position Adjustable Hitch
- ½" X 36" GR70 Yellow Zinc Safety Chains with Hooks
- 12,000 lbs. Static Front Jack w/ Spring Return
- Ground Lug: Copper Alloy Star Washer Bolted to Frame (Welded Optional)
- Fenders: ⅛" Fabricated Diamond Plate
- (2) Intermediate 12,000 lbs. Static Stabilizer Jacks
- (2) Rear 12,000 lbs. Static Stabilizer Jacks

WIRING

- DOT / ICC-- FMVSS / CMVSS Approved LED ULTRA- HIGH VISIBILITY 180 DEGREE BULLET Marker and Clearance Lights
- LED Sealed Beam Rubber Mounted Stop, Turn, Tail and Marker Lights
- Breakaway Kit with Absorbed Glass Mat (AGM) Battery
- 100% Sealed Heat-Shrunked Wiring Connections w/ Full Loom
- FULLY PROTECTED 7 or 6 Way Female Plug acts as Junction Box Recessed in FRAME RAIL. No Easily Damaged Plastic Junction Boxes

PAINT

- Biodegradable Pretreat Acid Cleaning (Superior to re-used sandblasting material that can impregnate metals with oil)
- Seams Caulked
- Rust Preventative 2-Part Epoxy Primer
- Two-Part Polyurethane Topcoats (2 topcoats)
- Standard Colors: White and CAT Yellow (Custom Available)

OPTIONS

- 13 HP HONDA Engine Hydraulic Power Pack Comes STANDARD w/ ENGINE COVER, 15 Gallon Reservoir, Replaceable Oil Filter, Pressure Gauge and Solar Fade Resistant Plastic Control Placard. (Electric Start Optional)
- 21 HP HONDA Engine Hydraulic Power Pack Comes STANDARD w/ ENGINE COVER, Electric Start, 25 Gallon Reservoir, Oil Cooler, Replaceable Oil Filter, Pressure Gauge and Solar Fade Resistant Plastic Control Placard.

OPTIONS (cont.)

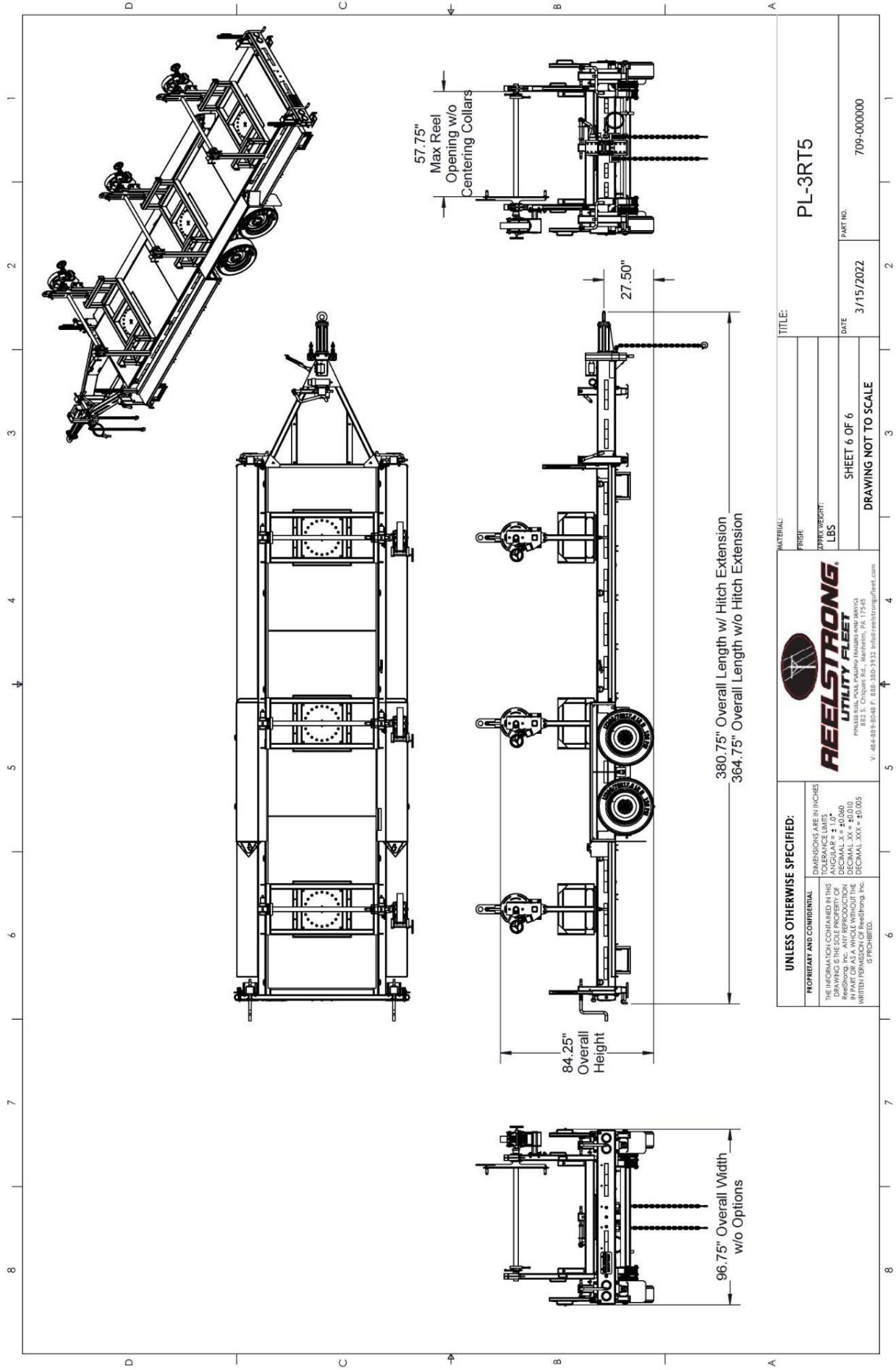
- 35 HP Vanguard Engine Hydraulic Power Pack Comes STANDARD w/ ENGINE COVER, Electric Start, 25 Gallon Reservoir, Oil Cooler, Triple Port Hydraulic Pump, Central Valve Bank w/ Separate Fine Metering Flow Control Valves, Replaceable Oil Filter, Pressure Gauge and Solar Fade Resistant Plastic Control Placard.
- Tier 4 Diesel Engine Hydraulic Power Pack Comes STANDARD w/ ENGINE COVER, Electric Start, 25 Gallon Reservoir, Oil Cooler, Triple Port Hydraulic Pump, Central Valve Bank w/ Separate Fine Metering Flow Control Valves, Replaceable Oil Filter, Pressure Gauge and Solar Fade Resistant Plastic Control Placard.
- Ten (10) Year Galvanized Structural Warranty (2-Year Painted)
- All Stainless Steel Fasteners (½" and under)
- 3" Lunette Eye
- Aluminum Engine Cover
- 3,300 ft/lbs Torque Hydraulic Take-up Retriever. (Motor Spooled w/ Reel Brake ILO Cross-Over Relief Valve for Smooth Instant Reel Stoppage)
- 2-7/16" Universal Adapter for Capstan and Power Reel Attachments
- Hydraulic Hose Rotary Swivel Union (*manages & eliminates loose hydraulic hoses*)
- 7 Inch General Purpose Capstan
- Collapsible Power Reel
- Rotating Arbor Ground
- 16" Bronze Alloy Ventilated Reel Brake w/ Ventilated Guard
- 16" Long 6-Bolt Hitch Extension (w/ 52" Safety Chains and Breakaway Cable Extension)
- Anti-Skid/Anti-Glare Sand Paint on all Walking Surfaces
- Various Trailer Light Plugs (Customer Choice)
- Aluminum or Steel Toolbox
- Air Brakes w/ ABS
- Wiring Connections Soldered and Sealed w/ Heat Shrink Tubing
- Plug-and-Play Sealco Wiring Harness
- Wheel Chocks: Rubber or All Weather Galvanized Grip Strut
- Spare Tire and Mount
- Solar Charged Breakaway Kit
- Strobe Warning Lights
- Hydraulic Front Jack
- Hydraulic Rear and Intermediate Outriggers
- Telescoping Rear and Intermediate Outriggers
- OVD Fairlead Rollers (One "1" Per Turret)
- URD Fairlead Rollers (Two "2" Per Turret)
- OVD/URD Cable Gathering Windows
- Arching URD Cable Gathering Window
- Economy URD Cable Gathering Window
- Truck-Lite Lighting
- Lug Nut Indicators

OPTIONAL PREMIUM ROLLER PACKAGE

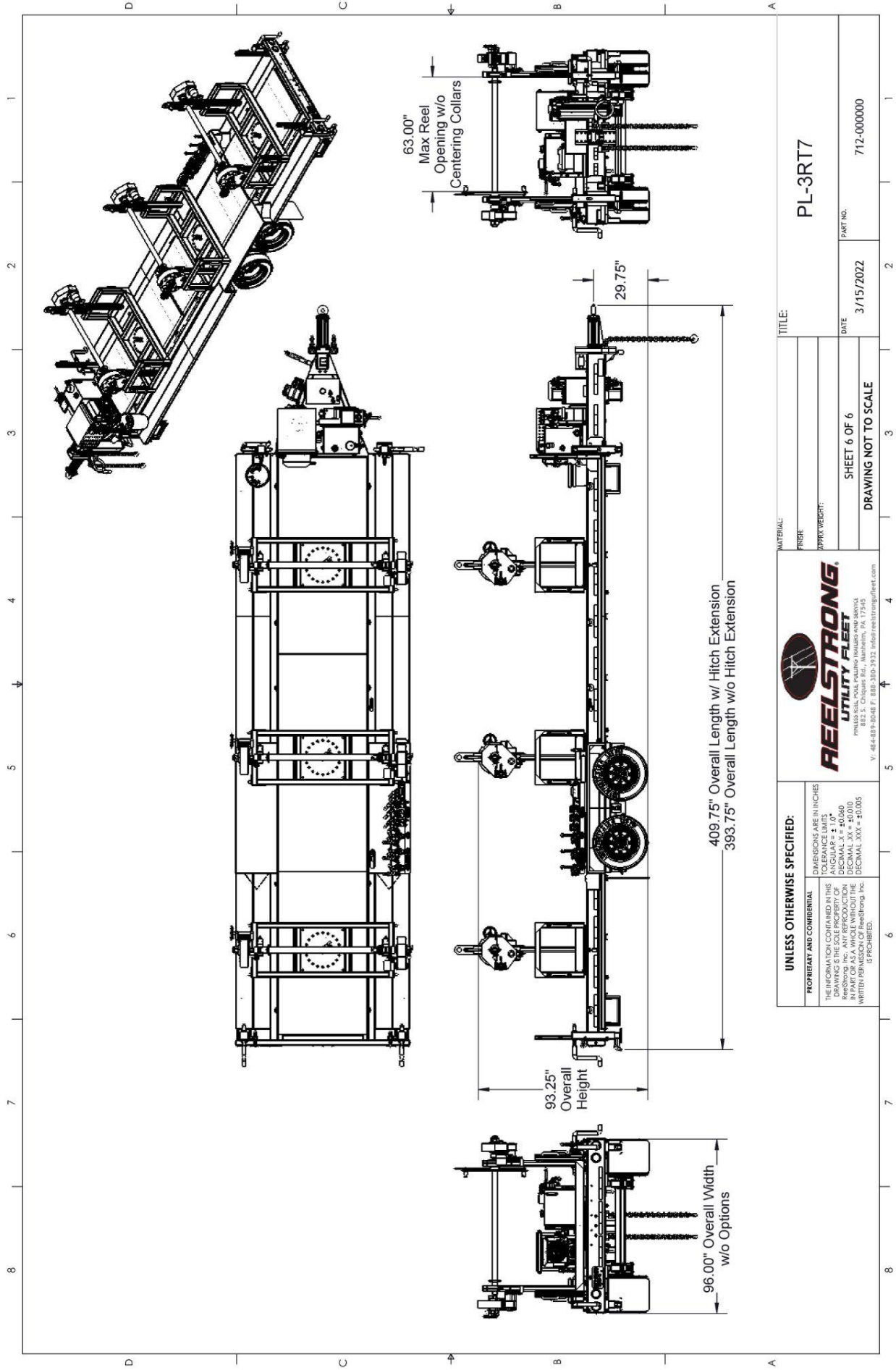
- OVD Fairlead Rollers (One “1” Per Turret)
- URD Fairlead Rollers (Two “2” Per Turret)
- OVD/URD Cable Gathering Windows
- URD Arching/Traversing Fairlead

OPTIONAL ECONOMY ROLLER PACKAGE

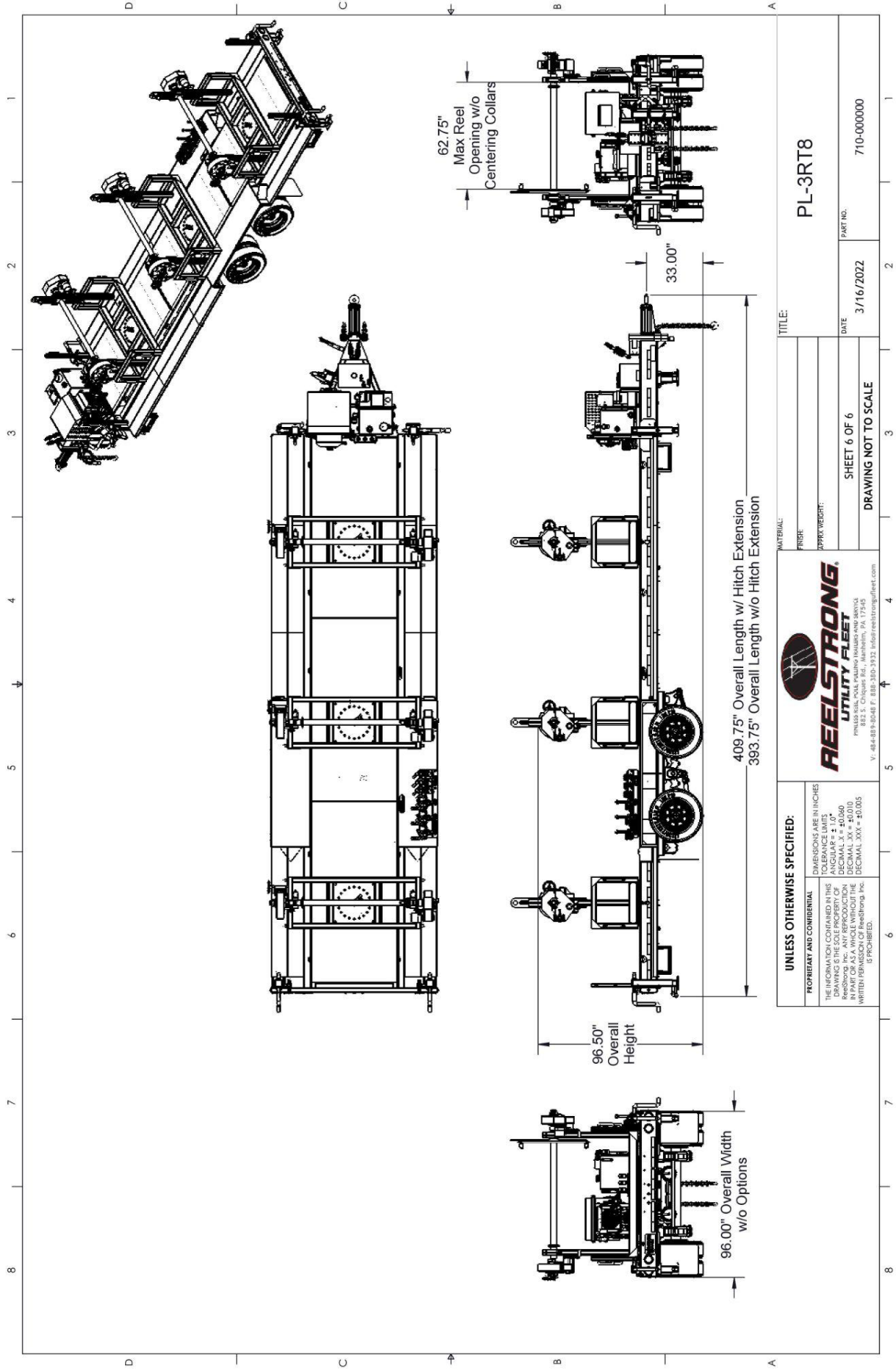
- OVD Fairlead Rollers (One “1” Per Turret)
- URD Fairlead Rollers (Two “2” Per Turret)
- OVD/URD Cable Gathering Windows
- URD Cable Gathering Window



UNLESS OTHERWISE SPECIFIED: DIMENSIONS ARE IN INCHES DECIMALS ARE TO THE NEAREST THOUSANDTH ANGULARS ± 1.0° DECIMAL .X = ±0.060 DECIMAL .XX = ±0.010 DECIMAL .XXX = ±0.005 WRITTEN PERMISSION OF ReelStrong, Inc. IS PROHIBITED.		REELSTRONG UTILITY FLEET <small>REELSTRONG UTILITY FLEET MANUFACTURING</small> <small>882 S. Claque Rd., Manheim, PA 17345</small> <small>P.O. Box 100, Manheim, PA 17345</small> <small>Ph: 484-889-8048 F: 884-380-3932 info@reelstrongfleet.com</small>	
PROPRIETARY AND CONFIDENTIAL THE INFORMATION CONTAINED IN THIS DRAWING IS THE PROPERTY OF REELSTRONG, INC. ANY REPRODUCTION IN PART OR AS A WHOLE WITHOUT THE WRITTEN PERMISSION OF REELSTRONG, INC. IS PROHIBITED.		PL-3RT5 PART NO. 709-000000	
MATERIAL: FRP APPROX WEIGHT: LBS		TITLE: SHEET 6 OF 6 DATE: 3/15/2022 DRAWING NOT TO SCALE	

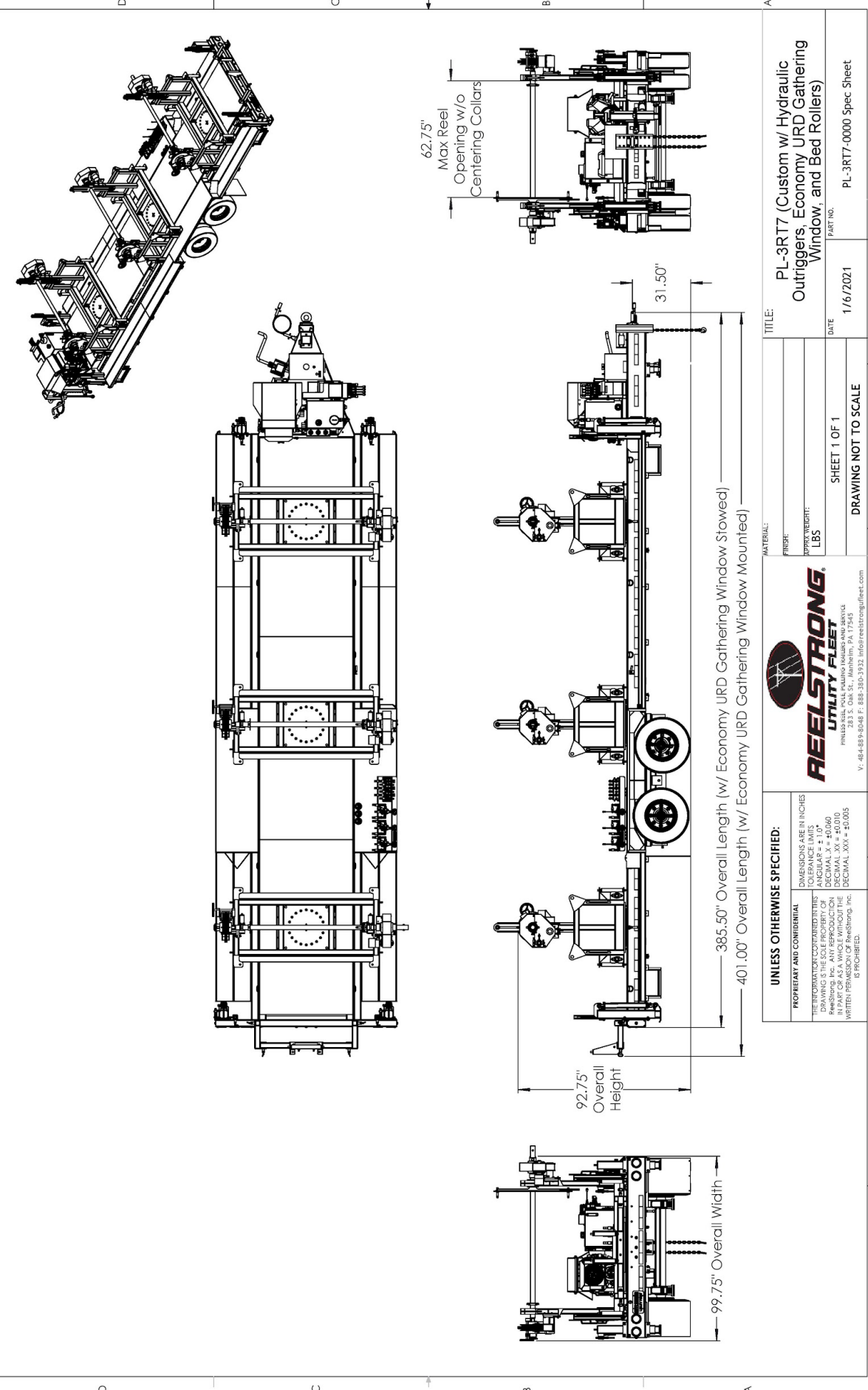


UNLESS OTHERWISE SPECIFIED: DIMENSIONS ARE IN INCHES DECIMALS TO THE TENTH ANGULARS ± 1.0° DECIMAL XX = ±0.050 DECIMAL .XX = ±0.010 DECIMAL .XXX = ±0.005 IS PROHIBITED.		REELSTRONG[®] UTILITY FLEET <small> PENNSYLVANIA, PA. 17545 882 S. Clarks Rd., Manheim, PA 17545 P.O. Box 488920, Ft. Belknap, VA 22032 Tel: 717-654-8888 Fax: 717-654-8889 Email: info@reelstrongfleet.com </small>	
PROPRIETARY AND CONFIDENTIAL THE INFORMATION CONTAINED IN THIS DRAWING IS THE PROPERTY OF REELSTRONG. IT IS TO BE USED ONLY IN CONNECTION WITH THE PART OR AS A WHOLE WITHOUT THE WRITTEN PERMISSION OF REELSTRONG, INC. IS PROHIBITED.		REELSTRONG UTILITY FLEET PL-3RT7	
MATERIAL: FINISH: APPROX WEIGHT:		TITLE:	
DATE: 3/15/2022		PART NO.: 712-000000	
SHEET 6 OF 6 DRAWING NOT TO SCALE			



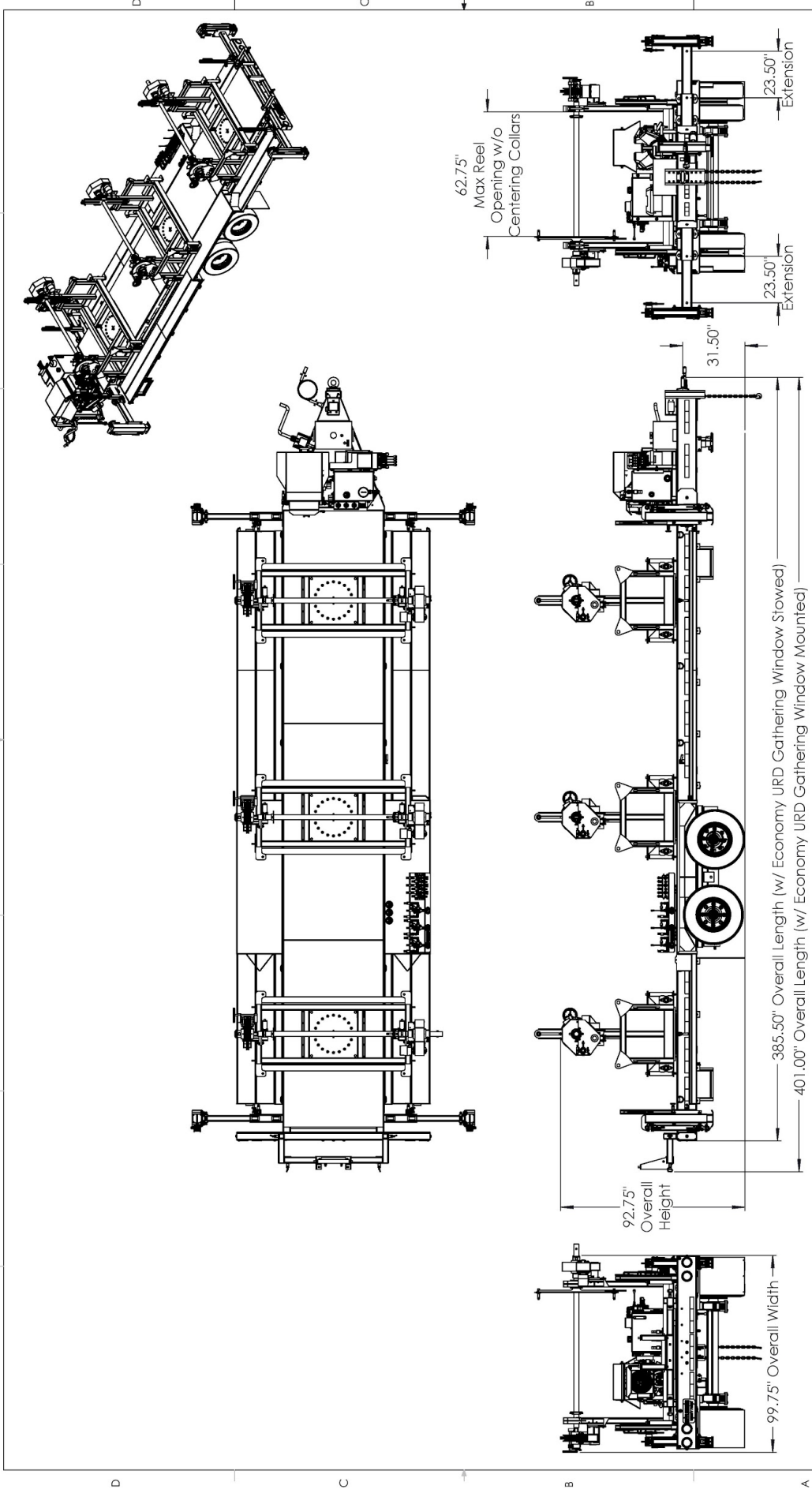
UNLESS OTHERWISE SPECIFIED: DIMENSIONS ARE IN INCHES DECIMALS TO THE TENTH ANGULARS ± 1.0° DECIMAL XX" = ±0.060 DECIMAL .XX" = ±0.010 DECIMAL .XXX" = ±0.005 WRITTEN PERMISSION OF ReelStrong, Inc. IS PROHIBITED.		REELSTRONG UTILITY FLEET <small> PENNSYLVANIA, PAUL PETERS (MANAGER NEWARK) 882 S. Clarks Rd., Manheim, PA 17345 P. 484-889-8048 F. 888-380-9332 info@reelstrongfleet.com </small>		TITLE: PL-3RT8
PROPRIETARY AND CONFIDENTIAL THE INFORMATION CONTAINED IN THIS DRAWING IS THE PROPERTY OF REELSTRONG, INC. ANY REPRODUCTION IN PART OR AS A WHOLE WITHOUT THE WRITTEN PERMISSION OF ReelStrong, Inc. IS PROHIBITED.		MATERIAL: FRP APPROX WEIGHT:		
SHEET 6 OF 6 DRAWING NOT TO SCALE		DATE: 3/16/2022	PART NO.: 710-000000	

1 2 3 4 5 6 7 8



UNLESS OTHERWISE SPECIFIED: PROPRIETARY AND CONFIDENTIAL THE INFORMATION CONTAINED IN THIS DRAWING IS THE SOLE PROPERTY OF REELSTRONG UTILITY FLEET. IT IS TO BE USED ONLY FOR THE PROJECT AND IN PART FOR AS A WHOLE WITHOUT THE WRITTEN PERMISSION OF Reelstrong, Inc. IS PROHIBITED.		DIMENSIONS ARE IN INCHES TOLERANCE LIMITS DECIMAL .XX = ±0.006 DECIMAL .XXX = ±0.010 DECIMAL .XXXX = ±0.005	
REELSTRONG UTILITY FLEET 283 S. Oak St., Abington, PA 17543 P: 610-889-8048 F: 888-380-3932 info@reelstrongfleet.com		TITLE: PL-3RT7 (Custom w/ Hydraulic Outriggers, Economy URD Gathering Window, and Bed Rollers) PART NO. PL-3RT7-0000 Spec Sheet DATE 1/6/2021 SHEET 1 OF 1 DRAWING NOT TO SCALE	

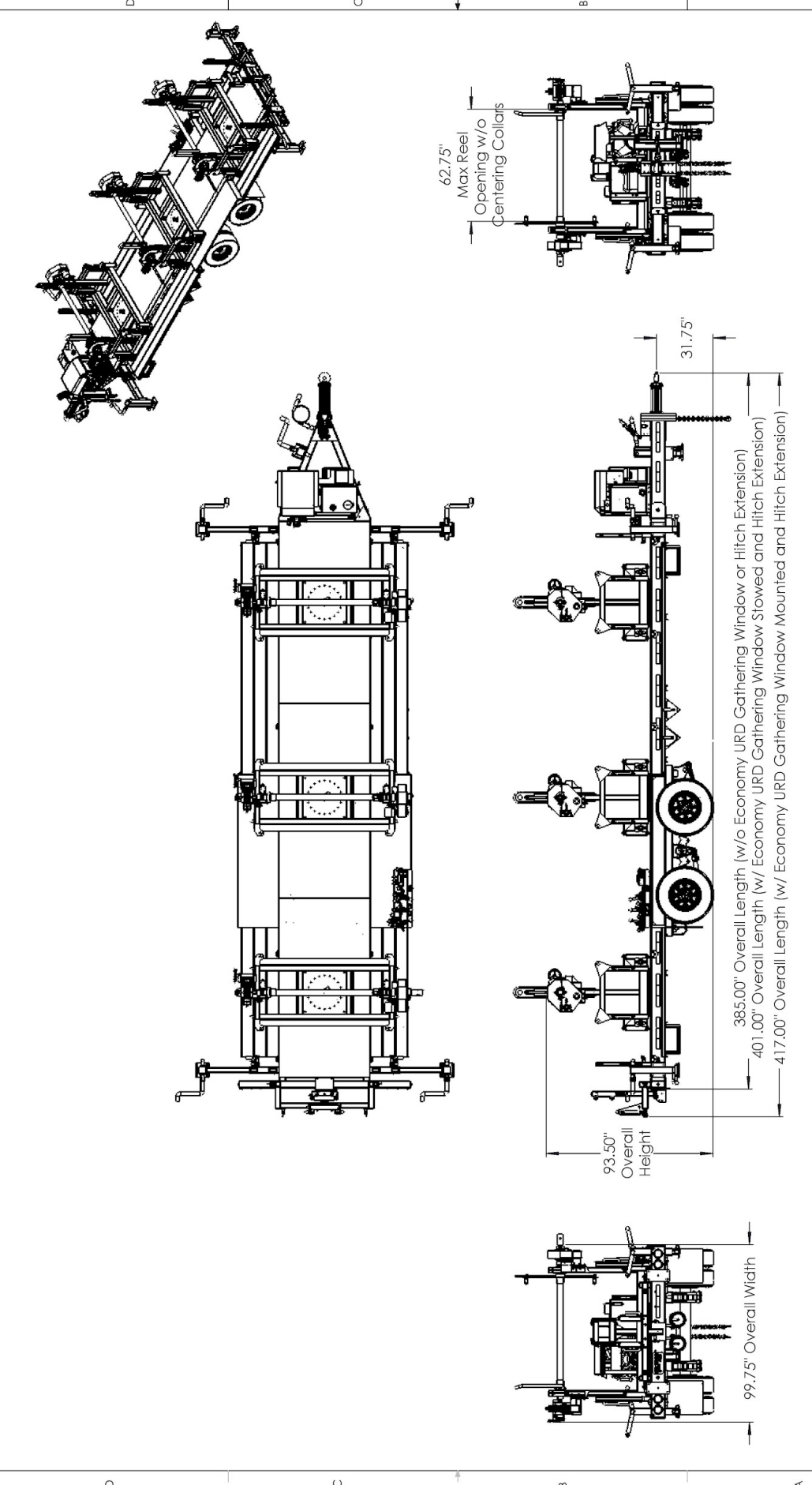
8 7 6 5 4 3 2 1



<p>UNLESS OTHERWISE SPECIFIED:</p> <p>PROPRIETARY AND CONFIDENTIAL</p> <p>THE INFORMATION CONTAINED HEREIN IS THE SOLE PROPERTY OF REELSTRONG UTILITY FLEET. IT IS TO BE USED ONLY FOR THE PROJECT AND IN PART FOR AS A WHOLE WITHOUT THE WRITTEN PERMISSION OF Reelstrong, Inc. IS PROHIBITED.</p>		<p>DIMENSIONS ARE IN INCHES</p> <p>TOLERANCE LIMITS</p> <p>DECIMAL .XX = ±0.060</p> <p>DECIMAL .XXX = ±0.010</p> <p>DECIMAL .XXIV = ±0.005</p>	
<p>REELSTRONG UTILITY FLEET</p> <p>283 S. Oak St., Abington, PA 17545</p> <p>PH: 610-889-8048 F: 888-380-3932 info@reelstrong/fleet.com</p>		<p>TITLE: PL-3RT7 (Custom w/ Telescoping Hydraulic Outriggers, Economy URD Gathering Window, and Bed Rollers)</p>	
<p>MATERIAL: LBS</p>		<p>DATE: 1/6/2021</p>	
<p>PROJECT WEIGHT: LBS</p>		<p>PART NO: PL-3RT7-0000 Spec Sheet</p>	
<p>SHEET 1 OF 1</p>		<p>DATE: 1/6/2021</p>	
<p>DRAWING NOT TO SCALE</p>		<p>DATE: 1/6/2021</p>	

8 7 6 5 4 3 2 1

1 2 3 4 5 6 7 8



<p>UNLESS OTHERWISE SPECIFIED:</p> <p>PROPRIETARY AND CONFIDENTIAL</p> <p>THE INFORMATION CONTAINED HEREIN IS THE SOLE PROPERTY OF REELSTRONG, INC. ANY REUSE OR DISTRIBUTION IN ANY FORM OR BY ANY MEANS WITHOUT THE WRITTEN PERMISSION OF Reelstrong, Inc. IS PROHIBITED.</p>		<p>DIMENSIONS ARE IN INCHES</p> <p>TOLERANCE LIMITS</p> <p>DECIMAL .XX = ±0.006</p> <p>DECIMAL .XXX = ±0.010</p> <p>DECIMAL .XXXX = ±0.005</p>	
<p>REELSTRONG UTILITY FLEET</p> <p>283 S. Oak St., Abington, PA 17545 P: 610-889-8048 F: 888-380-3932 info@reelstrongfleet.com</p>		<p>TITLE: PL-3RT8 (Custom w/ Telescoping Stabilizer Jacks)</p>	
<p>MATERIAL: FRP</p> <p>NET WEIGHT: LBS</p>		<p>DATE: 1/6/2021</p> <p>PART NO: MRT3-8-10000 Spec Sheet</p>	
<p>SHEET 1 OF 1</p> <p>DRAWING NOT TO SCALE</p>		<p>1 2 3 4 5 6 7 8</p>	

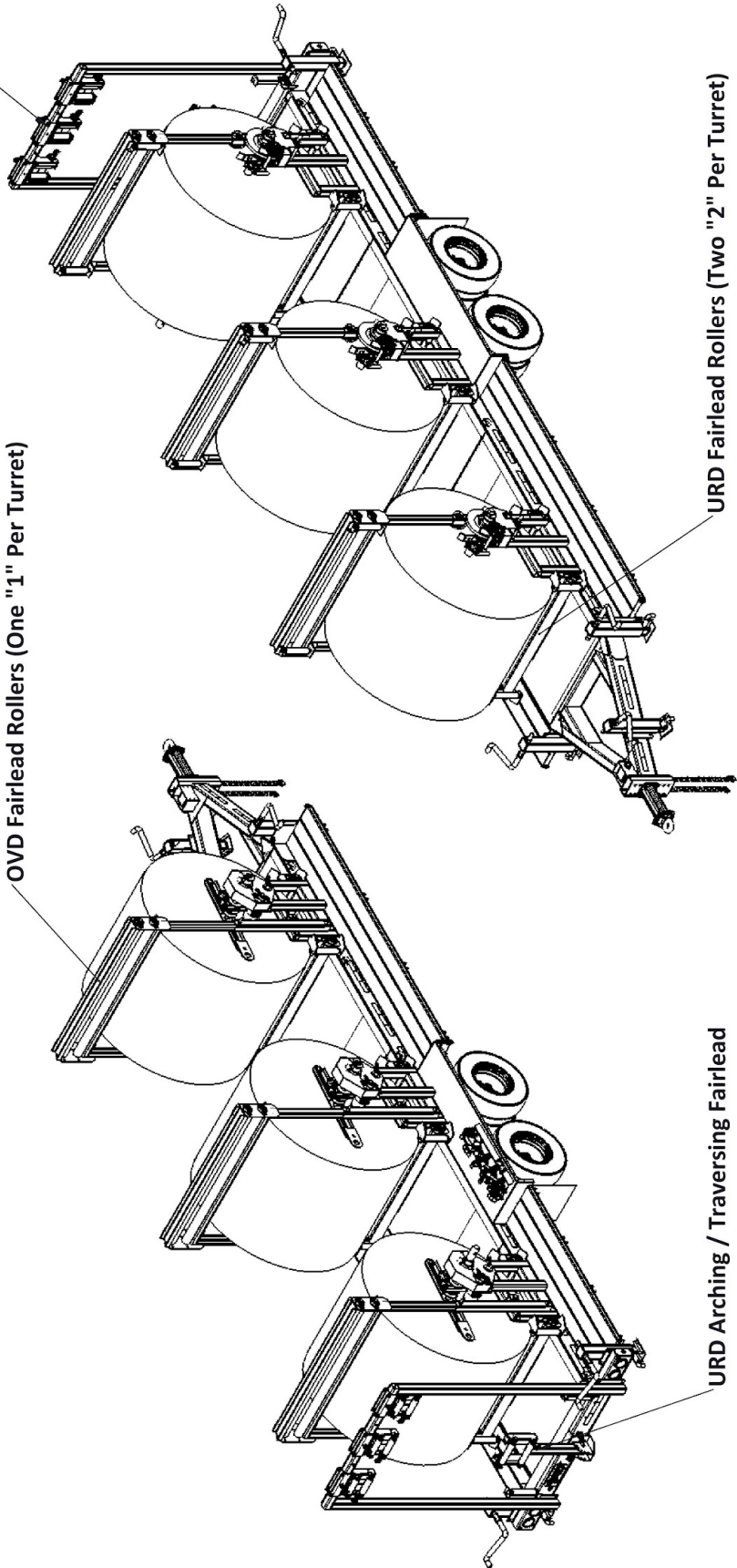
1 2 3 4 5 6 7 8

OVD/URD Cable Gathering Windows

OVD Fairlead Rollers (One "1" Per Turret)

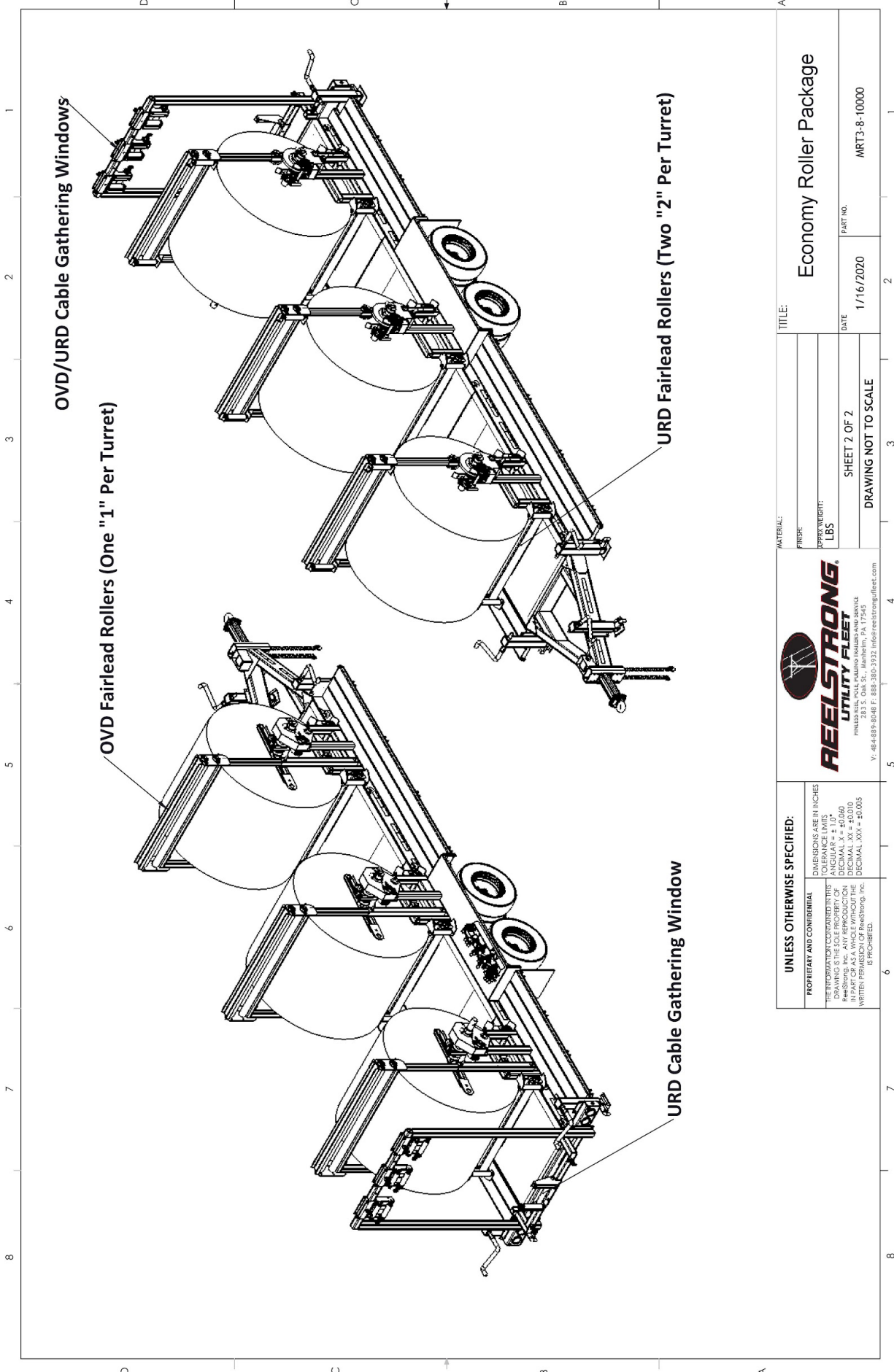
URD Fairlead Rollers (Two "2" Per Turret)

URD Arching / Traversing Fairlead



<p>UNLESS OTHERWISE SPECIFIED:</p> <p>PROPRIETARY AND CONFIDENTIAL</p> <p>THE INFORMATION CONTAINED IN THIS DRAWING IS THE SOLE PROPERTY OF REELSTRONG UTILITY FLEET. IT IS TO BE USED ONLY FOR THE PROJECT AND IN PART FOR AS A WHOLE WITHOUT THE WRITTEN PERMISSION OF Reelstrong, Inc. IS PROHIBITED.</p>		<p>DIMENSIONS ARE IN INCHES</p> <p>TOLERANCE LIMITS</p> <p>DECIMAL .1 = ±0.005</p> <p>DECIMAL .XX = ±0.010</p> <p>DECIMAL .XXX = ±0.005</p>	
<p>REELSTRONG UTILITY FLEET</p> <p>283 S. Oak St., Manheim, PA 17345</p> <p>V: 64-889-8048 F: 888-380-3932 info@reelstrong/fleet.com</p>		<p>TITLE: Premium Roller Package</p>	
<p>MATERIAL: LBS</p>		<p>DATE: 1/16/2020</p>	
<p>PROJECT WEIGHT:</p>		<p>PART NO: MRT3-8-10000</p>	
<p>SHEET 2 OF 2</p>		<p>DRAWING NOT TO SCALE</p>	

1 2 3 4 5 6 7 8



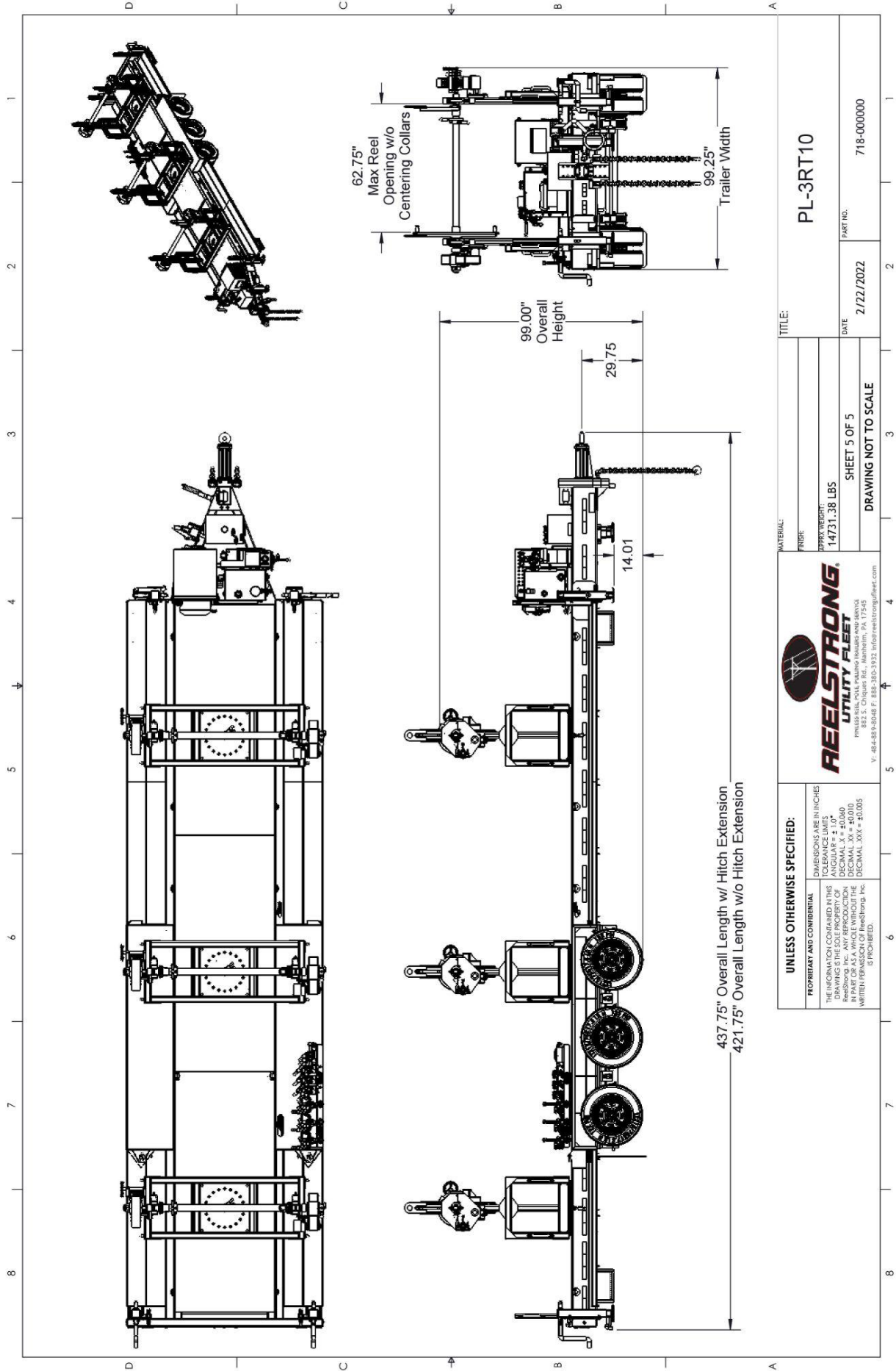
OVD/URD Cable Gathering Windows

OVD Fairlead Rollers (One "1" Per Turret)

URD Fairlead Rollers (Two "2" Per Turret)

URD Cable Gathering Window

UNLESS OTHERWISE SPECIFIED: PROPRIETARY AND CONFIDENTIAL THE INFORMATION CONTAINED IN THIS DRAWING IS THE SOLE PROPERTY OF REELSTRONG UTILITY FLEET. IT IS TO BE USED ONLY FOR THE PROJECT AND IN PART FOR AS A WHOLE WITHOUT THE WRITTEN PERMISSION OF Reelstrong, Inc. IS PROHIBITED.		DIMENSIONS ARE IN INCHES TOLERANCE LIMITS DECIMAL .XX = ±0.006 DECIMAL .XX = ±0.010 DECIMAL .XXX = ±0.005	
REELSTRONG UTILITY FLEET 283 S. Oak St., Mahanwah, PA 17545 P: 64-889-8048 F: 888-380-3932 info@reelstrong/fleet.com		TITLE: Economy Roller Package MATERIAL: LBS PROJECT WEIGHT: LBS DATE: 1/16/2020 PART NO: MRT3-8-10000	
SHEET 2 OF 2 DRAWING NOT TO SCALE		1 2 3 4 5 6 7 8	



437.75" Overall Length w/ Hitch Extension
 421.75" Overall Length w/o Hitch Extension

UNLESS OTHERWISE SPECIFIED: DIMENSIONS ARE IN INCHES UNLESS OTHERWISE SPECIFIED DECIMAL .XX = ±0.010 DECIMAL .XXX = ±0.005 WRITTEN PERMISSION OF ReelStrong, Inc. IS PROHIBITED.	 REELSTRONG UTILITY FLEET <small>REELSTRONG, INC. 882 S. CHICKES RD., MARLBOROUGH, PA 17545 V. 484-889-8048 F. 888-390-3932 info@reelstrongfleet.com</small>	TITLE:	PL-3RT10
		MATERIAL:	
		NET WEIGHT:	14731.38 LBS
		DATE:	2/22/2022
		PART NO.:	718-000000
		DRAWING NOT TO SCALE	
		SHEET 5 OF 5	