

# **REELSTRONG®**

## **UTILITY FLEET**

### **CPT LIFETIME WARRANTY MEGA-ROLLER™ w/ SELF-SECURING TONGUE-LOCK COMBINATION REEL / POLE / CARGO TRAILER SPECIFICATION**



#### **LOWEST TOTAL COST OF OWNERSHIP (TCO) via:**

- **LIFETIME WARRANTY MEGA-ROLLER™** (6 Roller Patent Pending) w/ Bronze Super Alloy Bearings Provides a Smooth “ONE MAN OPERATION” of the Tongue. NO TRUCK NEEDED to Extend or Retract. NO WEAR PADS TO MAINTAIN OR REPLACE.
- SELF-SECURING SECURELOCK™ Tongue-lock. No Pins to Lose.
- **PRACTICAL:** No Expensive, Unnecessary Bronze Components, yet we Don't Cut Corners and Provide Premium, Heavy Duty, Top-Quality Latches, Hardware, Fittings and Components.
- Non-Binding/Freezing EZ Slide Pole Centering Stanchions. Replaces Rusted/Seized Lever Lock Stanchions and Expensive Bronze.
- Heavy Duty yet Simple 5” H-Beam Pole Seats

**BUILT FOR SAFETY. BUILT FOR SPEED. BUILT TO LAST.**

## **CAPACITIES**

- CPT14: 16,100 lbs. GVWR @ 15% Tongue Weight
- CPTL14: 16,100 lbs. GVWR @ 15% Tongue Weight
- CPTL14: 16,100 lbs. GVWR @ 15% Tongue Weight
- CPT20: 22,100 lbs. GVWR @ 15% Tongue Weight
- CPTL20: 22,100 lbs. GVWR @ 15% Tongue Weight
- CPTL20: 22,100 lbs. GVWR @ 15% Tongue Weight
- CPTL-LB20: 22,100 lbs. GVWR @ 15% Tongue Weight

## **AXLES**

- CPT14: Tandem 7K lbs. Torsion
- CPTL14: Tandem 7K lbs. Torsion
- CPTL14: Tandem 7K lbs. Torsion
- CPT20: Tandem 10K lbs. Sprung
- CPTL20: Tandem 10K lbs. Sprung
- CPTL20: Tandem 10K lbs. Sprung
- CPTL-LB20: Tandem 10K lbs. Sprung

## **WHEELS**

- CPT14: (4) 16 x 6K / 8 on 6.5 BC w/ Zeroset
- CPTL14: (4) 16 x 6K / 8 on 6.5 BC w/ Zeroset
- CPTL14: (4) 16 x 6K / 8 on 6.5 BC w/ Zeroset
- CPT20: (4) 17.50 x 6.75 HC / 8 on 6.5 BC w/ 0.19 Inset
- CPTL20: (4) 17.50 x 6.75 HC / 8 on 6.5 BC w/ 0.19 Inset
- CPTL20: (4) 17.50 x 6.75 HC / 8 on 6.5 BC w/ 0.19 Inset
- CPTL-LB20: (4) 17.50 x 6.75 HC / 8 on 6.5 BC w/ 0.19 Inset

## **TIRES**

- CPT14: (4) ST-235/85R16 LR-E Tires
- CPTL14: (4) ST-235/85R16 LR-E Tires
- CPTL14: (4) ST-235/85R16 LR-E Tires
- CPT20: (4) ST-215/75R17 LR-H Tires
- CPTL20: (4) ST-215/75R17 LR-H Tires
- CPTL20: (4) ST-215/75R17 LR-H Tires
- CPTL-LB20: (4) ST-215/75R17 LR-H Tires

## **BRAKES**

- CPT14: 12.00" x 2.00" Electric w/ Safety Breakaway Kit
- CPTL14: 12.00" x 2.00" Electric w/ Safety Breakaway Kit
- CPTL14: 12.00" x 2.00" Electric w/ Safety Breakaway Kit
- CPT20: 12.25" x 3.38" Electric w/ Safety Breakaway Kit
- CPTL20: 12.25" x 3.38" Electric w/ Safety Breakaway Kit
- CPTL20: 12.25" x 3.38" Electric w/ Safety Breakaway Kit
- CPTL-LB20: 12.25" x 3.38" Electric w/ Safety Breakaway Kit

**POLE WEIGHT (PAYLOAD)**

- CPT14: 11,350 lbs. Approx.
- CPTL14: 11,150 lbs. Approx.
- CPTL14: 11,050 lbs. Approx.
- CPT20: 16,600 lbs. Approx.
- CPTL20: 16,400 lbs. Approx.
- CPTL20: 16,350 lbs. Approx.
- CPTL-LB20: 16,400 lbs. Approx.

**PAYLOAD: ALL FINAL PAYLOADS BASED ON CHOSEN MODEL AND OPTIONS****OVERALL LENGTH Retracted / Extended Lengths:**

- CPT14: 21' / 26' / 31'
- CPTL14: 25' / 29' / 33' / 37'
- CPTL14: 29' / 34' / 39' / 44'
- CPT20: 21' / 26' / 31'
- CPTL20: 25' / 29' / 33' / 37'
- CPTL20: 29' / 34' / 39' / 44'
- CPTL-LB20: 25' / 29' / 33' / 37'

**WIDTH:** 89.00"

**CURB WEIGHT:**

- CPT14: 4,750 lbs. Approx.
- CPTL14: 4,950 lbs. Approx.
- CPTL14: 5,050 lbs. Approx.
- CPT20: 5,500 lbs. Approx.
- CPTL20: 5,650 lbs. Approx.
- CPTL20: 5,750 lbs. Approx.
- CPTL-LB20: 5,700 lbs. Approx.

*Actual Trailer Weight will Vary with Options & Finishes Chosen.*

**POLE SEAT HEIGHT:** 45"

**CARGO BED**

- CPT14: 113.75" L X 63.75" W x 15" H
- CPTL14: 113.75" L X 63.75" W x 15" H
- CPTL14: 113.75" L X 63.75" W x 15" H
- CPT20: 113.75" L X 63.75" W x 15" H
- CPTL20: 113.75" L X 63.75" W x 15" H
- CPTL20: 113.75" L X 63.75" W x 15" H
- CPTL-LB20: 144" L X 63.75" W x 15" H

## STANDARD FEATURES

- **LIFETIME WARRANTY MEGA-ROLLER 6-ROLLER** Telescoping Tongue (NO WEAR PADS TO REPLACE))
- **SELF-SECURING SECURELOCK™** Tongue Lock Roller System (No Loose Pin)
- **NON-BINDING/FREEZING EZ-SLIDE POLE-CENTERING STANCHIONS**
- Oil Bath Hubs (Greaseable Option All)
- Electric Brakes
- Wheel Chock Holders

## POLE SECUREMENT

- ALL Pole Rests: 5" H Beam
- Winch Binders w/ Ratcheting Breaker Bar (**BOA Crank Winch Optional**)

## STANDARD TRAILER BODY

- 6" X 6" X 3/8" ("Square" for Max Equal Lateral and Vertical Strength) Male Extendable Tongue. (Compare to Competition)
- 8" X 8" X 1/4" Wall Female Tongue Tube
- 6" X 3" X 1/4" Wall Frame
- 7-Position Adjustable Hitch
- 3/8" X 36" GR70 Yellow Zinc Safety Chains with Hooks
- 1/2" X 42" GR70 Yellow Zinc Safety Chains for Models Exceeding 18,000 lbs. GVWR
- Removable Male Extension Tongue
- Standard Cargo Area
- 12,000 lbs. Static Front Jack w/ Spring Return
- Tailgate Chains
- Front Removable / Adjustable Pole Seat Mounted on Front Male Tongue
- 60" Wide 5" H-Beam Pole Seat w/ EZ-Slide Stanchions ( Hitch Extension Recommended to prevent Jack-knifing and Clear Most Step Bumpers)
- Six (6) D-Rings Front, Center and Rear for Cargo

## WIRING

- DOT / ICC-- FMVSS / CMVSS Approved LED ULTRA- HIGH VISIBILITY 180 DEGREE BULLET Marker and Clearance Lights
- LED Sealed Beam Rubber Mounted Stop, Turn, Tail and Marker Lights
- **Internal Cat Track** Protects Wiring (and air brakes if applicable)
- Removable Rear Access Door to Access Cat Track and Wiring
- 100% Sealed Heat-Shrunked Wiring Connections w/ Full Loom
- Breakaway Kit with Absorbed Glass Mat (AGM) Battery
- FULLY PROTECTED 7 or 6 Way Female Plug acts as Junction Box Recessed in FRAME RAIL. No Easily Damaged Plastic Junction Boxes

## **PAINT**

- Biodegradable Pretreat Acid Cleaning (Superior to re-used sandblasting material that can impregnate metals with oil)
- Seams Caulked
- Rust Preventative 2-Part Epoxy Primer
- Two-Part Polyurethane Topcoats (2 topcoats)
- Standard Colors: White and CAT Yellow (Custom Available)

## **OPTIONS**

- 13 HP HONDA Engine Hydraulic Power Pack Comes STANDARD w/ ENGINE COVER, 15 Gallon Reservoir, Replaceable Oil Filter, Pressure Gauge and Solar Fade Resistant Plastic Control Placard. (Electric Start Optional)
- Full Width of Trailer 5" H-Beam Pole Seat ILO 60" Wide
- 10-Year Galvanized Structural Warranty (2-Year Painted)
- BOA Hand Operated Ratcheting Pole Strap Winch for SAFETY and Ultra Ease-of-use
- 10K Air Brakes w/ ABS (trailer must be widened 4-1/2" to get this option)
- 1 x 7,000 LB Center REEL STAND w/ Ultra-Low Friction, High Impact Nylatron Reel Bar Saddle
- 2 x 5,000 LB Reel Stands

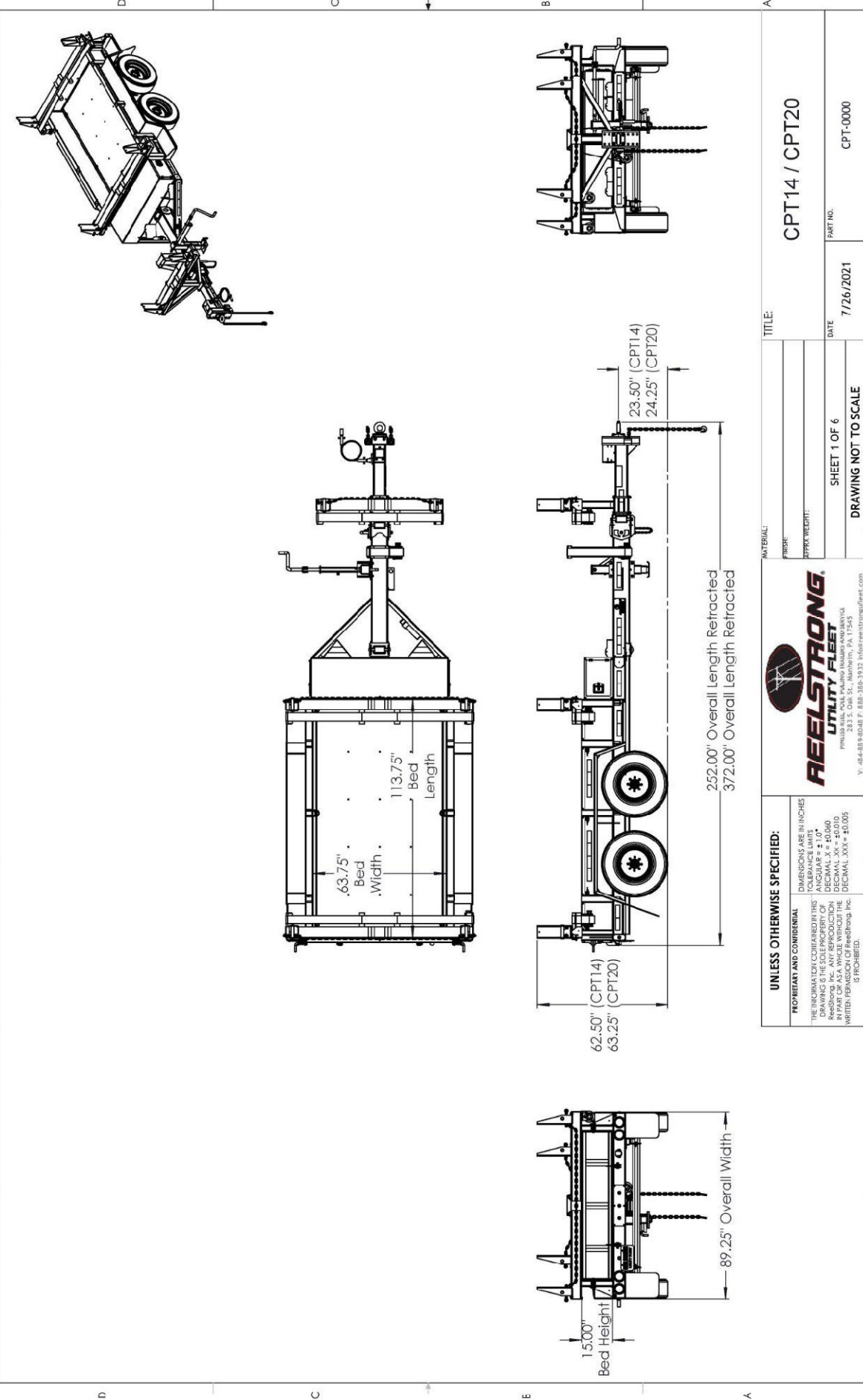
### **IF REEL STAND/S ARE CHOSEN THE FOLLOWING OPTIONS ARE POSSIBLE**

- 16" Bronze Alloy TRU-STOP Ventilated Reel Brake w/ Ventilated Guard
- 3,300 ft/lbs Torque Hydraulic Take-up Retriever. (Motor Spooled w/ Reel Brake ILO Cross-Over Relief Valve for Smooth Instant Reel Stoppage)
- 2-7/16" Universal Adapter for Capstan and Power Reel Attachments
- 7 Inch General Purpose Capstan
- Collapsible Power Reel
- Slip-Clutch Fiber-Optic Pulling Capstan
- Lever Lock Stanchions
- Wiring Connections Soldered and Sealed w/ Heat Shrink Tubing
- Plug-and-Play Sealco Wiring Harness
- Wheel Chocks: Rubber or All Weather Galvanized Grip Strut
- Spare Tire and Mount
- Extension Intervals to Customer Spec
- Solar Charged Breakaway Kit
- Bolt-on Side Toolboxes
- Quick-Rotate Swivel Jack
- 16" Long 6-Bolt Hitch Extension (w/ 52" Safety Chains and Breakaway Cable Extension)
- 3" Lunette Eye
- All Stainless Steel Fasteners (1/2" and under)
- Anti-Skid/Anti-Glare Sand Paint on all Walking Surfaces
- Various Trailer Light Plugs (Customer Choice)
- Truck-Lite Lighting
- Lug Nut Indicators
- Lateral Turret Option (Size Customizable)

## **OPTIONAL LIGHT BAR**

- All TIG Welded Aluminum w/ Claw-Tooth for Superior Grip
- Contains (4) Four 4" Stop/Turn / Tail Rubber Mounted Sealed Beam LED Lights
- (3) Three Center ID Marker Lights
- (2) Two Side Marker Lights
- 7-Way REMOVABLE, DOUBLE ENDED NON-HARD WIRED Light Plug (to prevent yank-out damage and for easy maintenance) (7-Way ILO 4-Way is easier to source and more readily available for you)
- 35' Standard Electric Cable Length with a 7-Way Connector Plug

8 7 6 5 4 3 2 1



**UNLESS OTHERWISE SPECIFIED:**

ALL DIMENSIONS ARE IN INCHES  
 TOLERANCE LIMITS  
 ANGULAR ± 1.0°  
 DECIMAL .X = ±0.0060  
 DECIMAL .XX = ±0.0040  
 DECIMAL .XXX = ±0.0030  
 DIMENSIONS SHOWN IN PARENT PARENTHESES ARE FOR REFERENCE ONLY.  
 REPRODUCTION OF THIS DRAWING WITHOUT THE WRITTEN PERMISSION OF REELSTRONG INC. IS PROHIBITED.

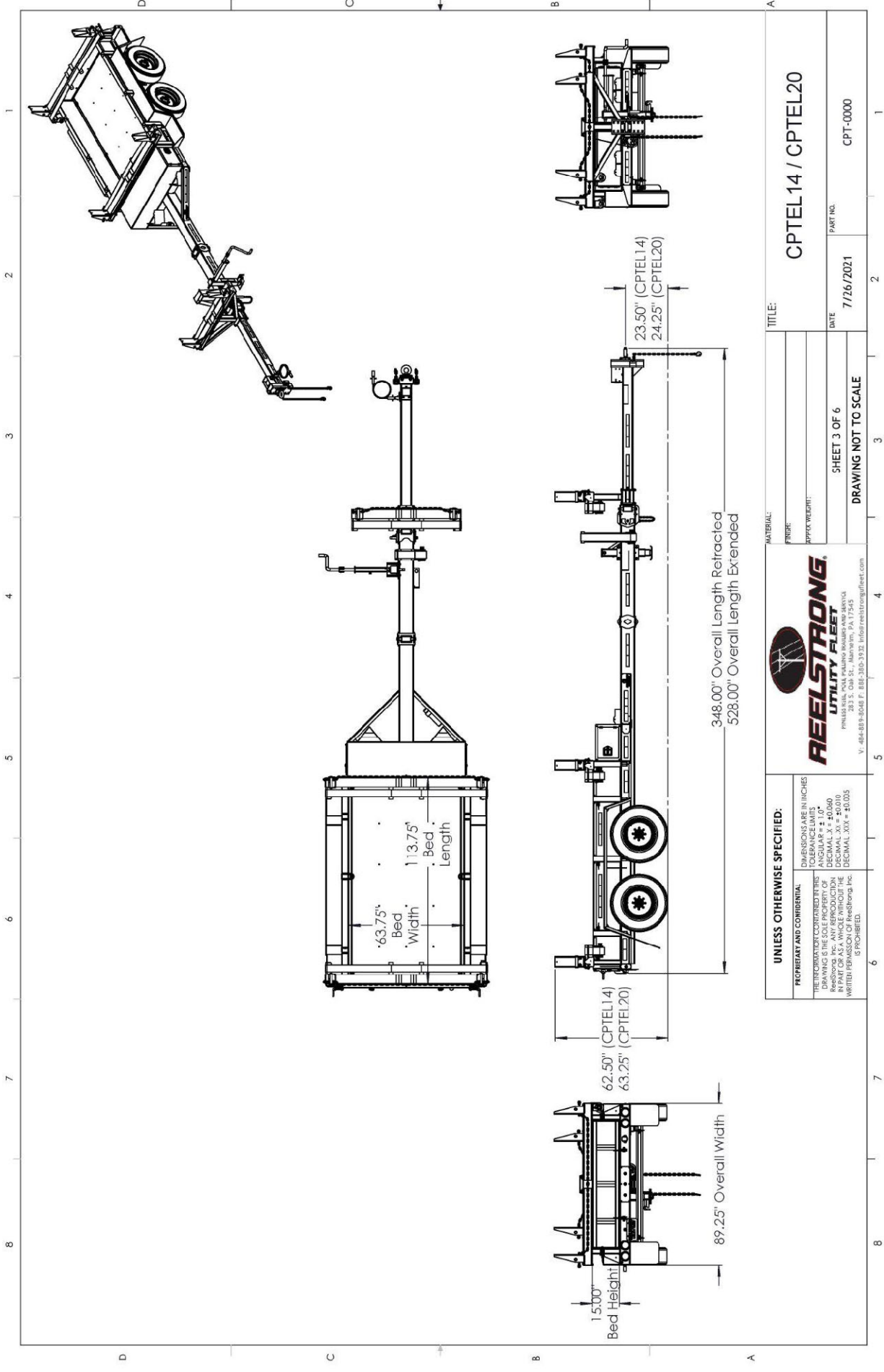
**REELSTRONG**  
 UTILITY FLEET

PHILIPSBORO, PAOL PHILIPSBORO, PAOL PHILIPSBORO, PAOL  
 205 S. COBB ST., PHILIPSBORO, PA, 17545  
 V: 610-888-8800 F: 610-888-8801 E: info@reelstrongutility.com

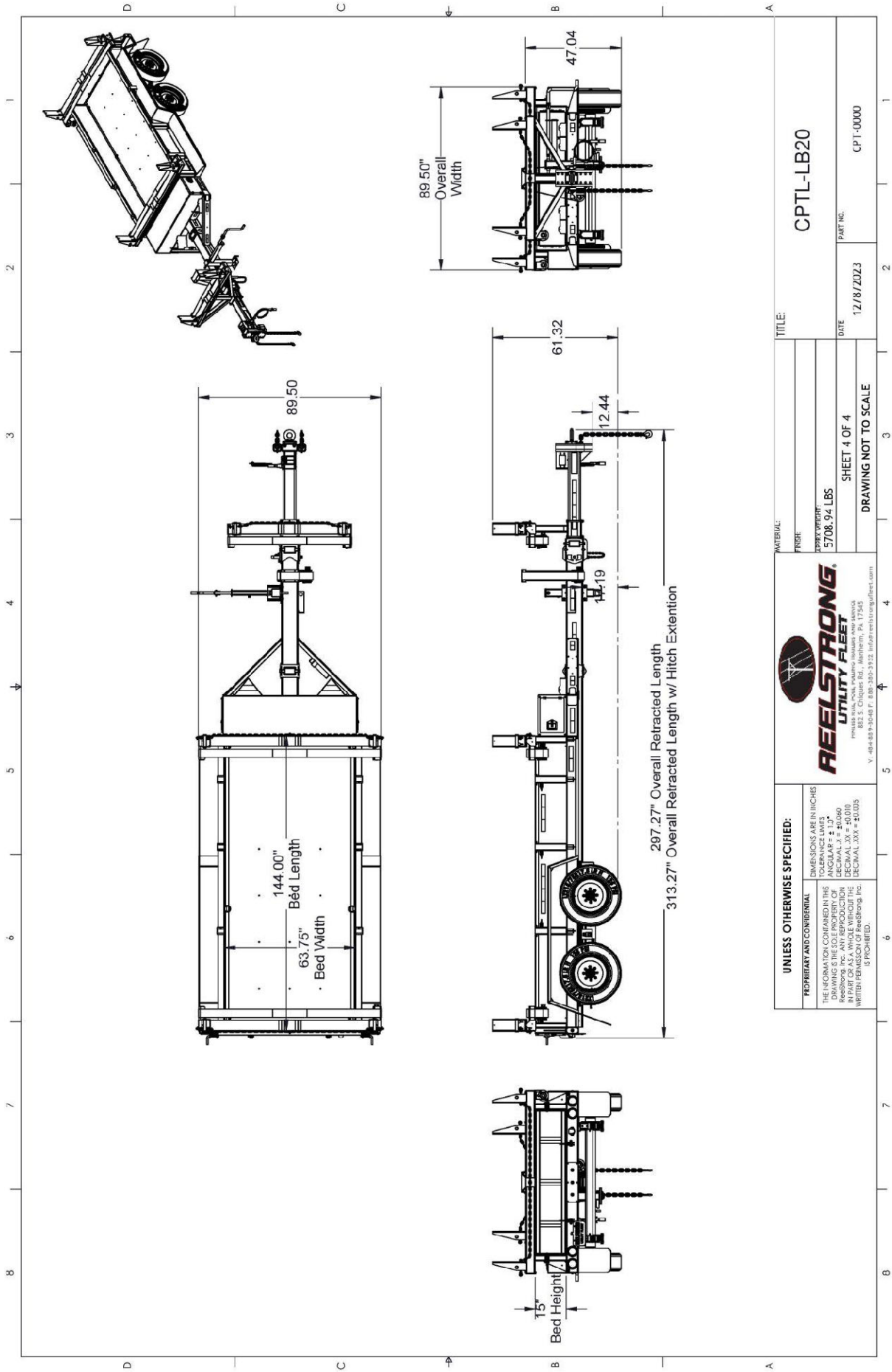
MATERIAL:		TITLE: CPT14 / CPT20	
FINISH:		PART NO. CPT-0000	
DATE: 7/26/2021		DRAWING NOT TO SCALE	
SHEET 1 OF 6			







<b>UNLESS OTHERWISE SPECIFIED:</b> DIMENSIONS ARE IN INCHES ANGLES ARE IN DEGREES TOLERANCES UNLESS OTHERWISE SPECIFIED: FRACTIONS - ± 0.005 DECIMAL - XX = ±0.050 DECIMAL - XXX = ±0.010 DECIMAL - XXXX = ±0.005 WRITING PERMISSION OF ReelStrong, Inc. IS PROHIBITED.		<b>REELSTRONG</b> <b>UTILITY FLEET</b> FINLAYSON, PAUL PALMISTO, MANAGER AND SALES 283 S. OAK ST., MANAYUNK, PA 17345 V. 484-889-8048 F. 888-380-3932 info@reelstrongfleet.com	
<b>PROPRIETARY AND CONFIDENTIAL</b> THE INFORMATION CONTAINED HEREIN IS THE PROPERTY OF REELSTRONG, INC. AND IS NOT TO BE REPRODUCED OR TRANSMITTED IN ANY FORM OR BY ANY MEANS, WITHOUT THE WRITTEN PERMISSION OF REELSTRONG, INC.		<b>TITLE:</b> CPTL14 / CPTL20 <b>PART NO.:</b> CPT-0000 <b>DATE:</b> 7/26/2021 <b>SHEET 3 OF 6</b> <b>DRAWING NOT TO SCALE</b>	



<p><b>UNLESS OTHERWISE SPECIFIED:</b></p> <p>PROPRIETARY AND CONFIDENTIAL          DIMENSIONS ARE IN INCHES          TOLERANCE LIMITS          ANGULAR ± 1.3°          DRAWING IS THE SOLE PROPERTY OF          ReelStrong, Inc. ANY REPRODUCTION          OR TRANSMISSION OF THIS DRAWING          WITHOUT THE WRITTEN PERMISSION OF REELSTRONG, INC.          IS PROHIBITED.</p>		<p><b>REELSTRONG.</b>  <b>UTILITY FLEET</b></p> <p>UTILITY FLEET, POULTRY, POLYMER, PLASTIC, AND SERVICE          V. 08-04-05 8-02-08 P. 888-330-3332 <a href="mailto:info@reelstrong.com">info@reelstrong.com</a></p>		<p>TITLE: CPTL-LB20</p>	
<p>MATERIAL: STEEL</p>		<p>NET WEIGHT: 5708.94 LBS</p>		<p>PART NO.: CPT-0000</p>	
<p>SHEET 4 OF 4</p>		<p>DATE: 12/8/2023</p>		<p>DRAWING NOT TO SCALE</p>	