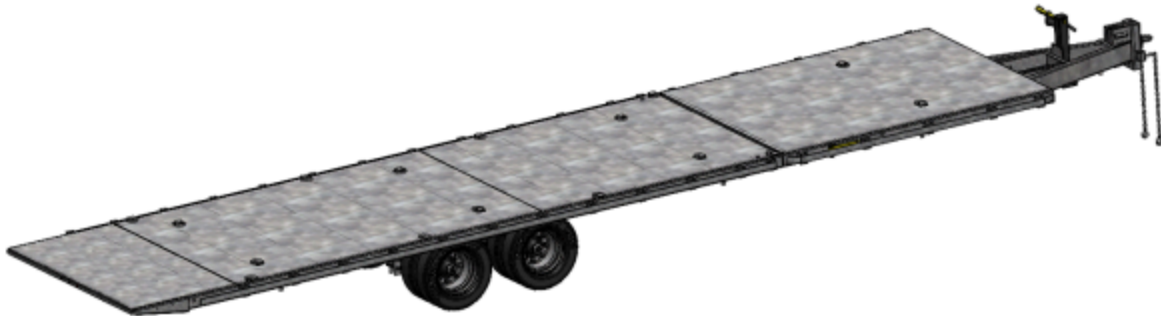


# **REELSTRONG®**

## **UTILITY FLEET**

### **TD23-DO POWERLOCK III™ COMBINATION GRAVITY TILT-DECK TRAILER SPECS**



#### **EXCLUSIVE STANDARD ADDED VALUE:**

- POWERLOCK III™ Technology Provides Industry Leading Safety, Ease of Use, Low Maintenance and Durability.
  - SAFETY and Peace of Mind
  - No Pins, Cotters, or Lanyards that Secure the Tilt Deck (which is the most critical safety point).
  - Faster Loading, Unloading, and Deployment Reduces Labor Costs and Fatigue on Workers.

**BUILT FOR SAFETY. BUILT FOR SPEED. BUILT TO LAST.**

**CAPACITIES:** 33,000 lbs. GVWR @ 10% Tongue Weight

**AXLES:** Tandem 15K lbs. Sprung

**WHEELS:** (8) 17.5 x 6.75HC, 10 on 275mm BC, 5.60 Outset Wheel

**TIRES:** (8) 215/75R17.5 LR-H Tires

**BRAKES:** 12.25" x 5.00" Electric Brakes

**PAYLOAD: ALL FINAL PAYLOADS BASED ON CHOSEN MODEL AND OPTIONS**

**PAYLOAD CAPACITY:** 23,600 Lbs. Approx.

**OVERALL LENGTH:** 40'

**OVERALL WIDTH:** 102.00"

**OVERALL WEIGHT:** 9,400 lbs. Approx.

(Actual Trailer Weight will Vary with Options & Finishes Chosen)

#### **STANDARD FEATURES**

- POWERLOCK III™ Auto-Locking Technology Provides Industry Leading Safety, Ease of Use, Low Maintenance and Durability.
- Oil Bath Hubs (Greaseable Option All)
- Electric Brakes

#### **STANDARD TRAILER BODY**

- Heavy Duty 8" X 3" X ¼"
- 6-Position Adjustable Hitch
- ½" X 36" GR70 Yellow Zinc Safety Chains with Hooks
- 12,000 lbs. Static Front Jack w/ Spring Return
- A-frame: Approx. 64" Long

#### **WIRING**

- DOT / ICC Approved LED Lights and Conspicuity Reflective Tape
- FMVSS / CMVSS Standard 108 LED Lighting
- Sealed Beam, Rubber Mounted Stop, Turn, Tail and Marker Lights
- 100% Sealed Heat-Shrunked Wiring Connections w/ Full Loom
- Breakaway Kit with Absorbed Glass Mat (AGM) Battery

## **PAINT**

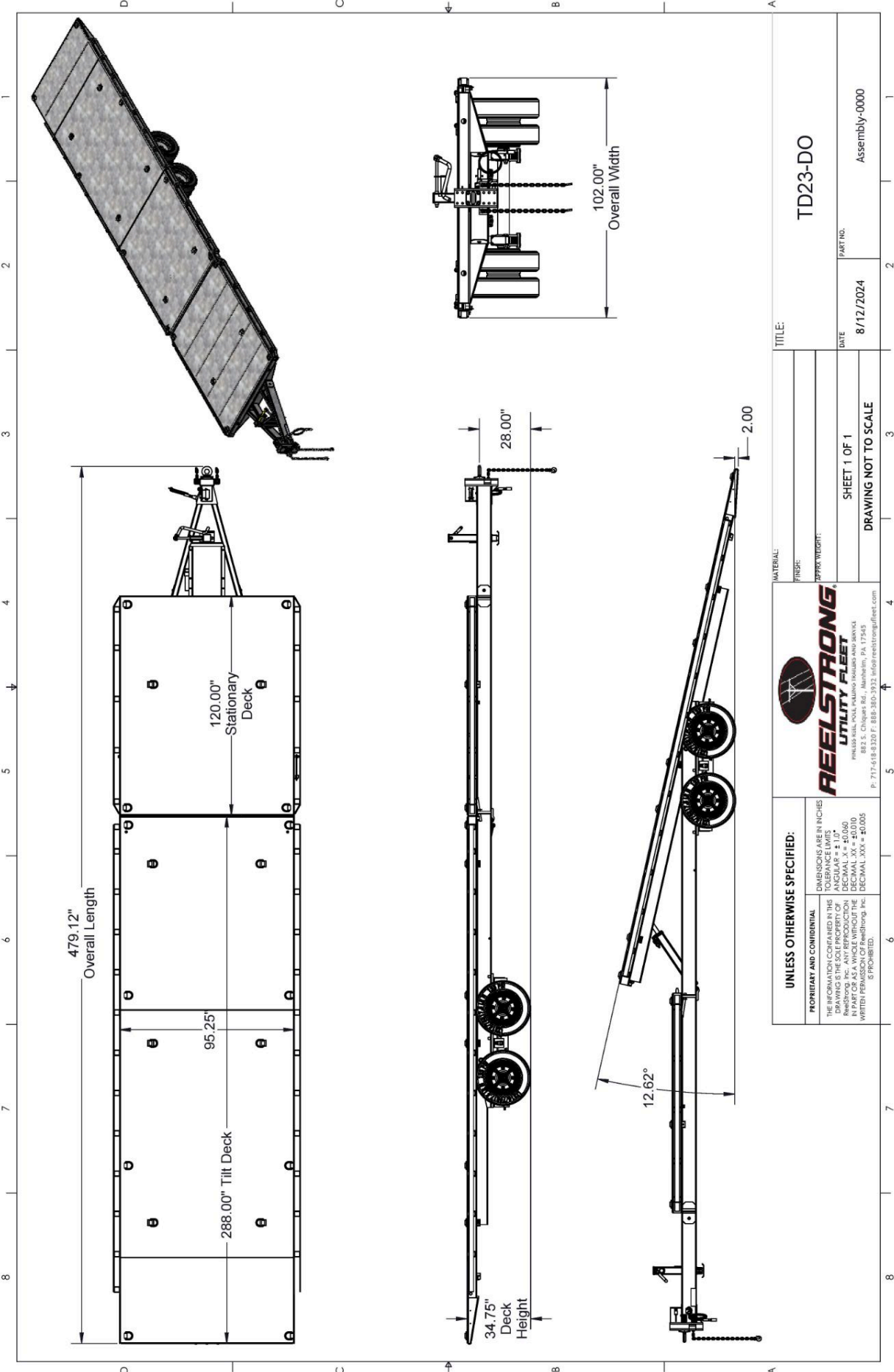
- Biodegradable Pretreat Acid Cleaning  
(Superior to re-used sandblasting material that can impregnate metals with oil)
- Seams Caulked
- Rust Preventative 2-Part Epoxy Primer
- Standard Colors: Red, Black, White and CAT Yellow

## **OPTIONS**

- 10-Year Galvanized Structural Warranty (2-Year Painted)
- 13 HP HONDA Engine Hydraulic Power Pack Comes STANDARD w/ ENGINE COVER, 15 Gallon Reservoir, Replaceable Oil Filter, Pressure Gauge and Solar Fade Resistant Plastic Control Placard. (Electric Start Optional)
- 12V Electric Over Hydraulic Power System.
- 16" Long 6-Bolt Hitch Extension (w/ 52" Safety Chains and Breakaway Cable Extension)
- Aluminum or Steel Toolbox
- 4 x 5,000 Lbs Removable Reel Stands w/ Ultra-Low Friction, High Impact Nylatron Reel Bar Saddle
- 4 x Removable 60" Width Pole Bunks 5" H-Beam Pole Seat
- Hydraulic Front Jack
- Wiring Connections Soldered and Sealed w/ Heat Shrink Tubing
- Plug-and-Play Sealco Wiring Harness
- Wheel Chocks: Rubber or All Weather Galvanized Grip Strut
- Solar Charged Breakaway Kit
- Strobe Warning Lights
- All Stainless Steel Fasteners (1/2" and under)
- Truck-Lite Lighting
- Lug Nut Indicators
- 3" Lunette Eye
- 10' Attachment / Accessory Rack

## **IF REEL STAND/S ARE CHOSEN THE FOLLOWING OPTIONS ARE POSSIBLE**

- 3,300 ft/lbs Torque Hydraulic Take-up Retriever. (Motor Spooled w/ Reel Brake ILO Cross-Over Relief Valve for Smooth Instant Reel Stoppage)
- 16" Bronze Alloy Ventilated Reel Brake w/ Ventilated Guard
- Conical Lifting Lug Package for 2.50" Reel Bars
  - "Precision Machined" CONICAL centering collar w/ lift lug (Yellow Zinc Plated)
  - Removable sliding "Precision Machined" CONICAL drive bar cone (Yellow Zinc Plated)



TITLE: TD23-DO		PART NO. Assembly-0000	
DATE: 8/12/2024		SHEET 1 OF 1	
DRAWING NOT TO SCALE		DRAWING NOT TO SCALE	
<b>REELSTRONG</b> UTILITY FLEET <small>PHILADELPHIA, PA 19104</small> <small>882 S. Chiques Rd., Mahan, PA 17545</small> <small>P: 717-618-8320 F: 888-380-3932 info@reelstrongfleet.com</small>		UNLESS OTHERWISE SPECIFIED: DIMENSIONS ARE IN INCHES TOLERANCE LIMITS: ANGULAR = ± 1.0° DECIMAL = ± 0.0625 DECIMAL XX = ± 0.010 DECIMAL XXX = ± 0.005 WRITTEN PERMISSION OF ReelStrong Inc. IS PROHIBITED.	