

REELSTRONG[®]

UTILITY FLEET

MRST3-4-RC18 POWERLOCK™ REEL / CARGO TRAILER SPECS



EXCLUSIVE STANDARD ADDED VALUE:

- POWERLOCK™ Technology Provides Industry Leading Safety, Ease of Use, Low Maintenance and Durability.
 - SAFETY and Peace of Mind
 - No Pins, Cotters, or Lanyards that Secure the Reel Arbor (which is the most critical safety point).
 - Faster Reel Loading, Unloading, and Deployment Reduces Labor Costs and Fatigue on Workers.

BUILT FOR SAFETY. BUILT FOR SPEED. BUILT TO LAST.

CAPACITIES: 25,990 lbs. GVWR @ 15% Tongue Weight

AXLES: Tandem 12K lbs. Sprung

WHEELS: (4) 17.5 x 6.75 HC / 8 on 6.5 BC w/ 0.19 Inset

TIRES: (4) ST-235/75R17.5 LR-J Tires

BRAKES: 12.25" x 5.00" Electric w/ Safety Breakaway Kit

REEL / CARGO WEIGHT (PAYLOAD): 18,190 lbs. Approx. (combined)

(3) 96" x 6,000 lbs. Approx.

(4) 72" x 4,500 lbs. Approx.

PAYLOAD: ALL FINAL PAYLOADS BASED ON CHOSEN MODEL AND OPTIONS

REEL DIAMETER: (3) 96" or (4) 72" Maximum

REEL WIDTH: 60" Maximum

REEL SHAFT DIAMETER: 2.50" Tube w/ Centering Collars

OVERALL LENGTH: 366.00"

OVERALL WIDTH: 102"

OVERALL WEIGHT: 7,800 lbs. Approx. (Actual Trailer Weight will Vary with Options & Finishes Chosen)

STANDARD FEATURES

- POWERLOCK™ Technology Provides Industry Leading Safety, Ease of Use, Low Maintenance and Durability.
- Hauls 3 x 96" Diameter or 4 x 72" Diameter Reels
- Oil Bath Hubs (Greaseable Option All)
- Electric Brakes
- Wheel Chock Holders

STANDARD TRAILER BODY

- Heavy Duty 6" X 3" X ¼" Frame
- 6-Position Adjustable Hitch
- ½" X 36" GR70 Yellow Zinc Safety Chains with Hooks
- 12,000 lbs. Static Front Jack w/ Spring Return
- Ground Lug: Copper Alloy Bolted to Frame
- Fenders: ⅛" Tread Plate

—All specifications / designs are subject to change without notice - All GVWR and reel capacities are de-rateable to your needs.

STANDARD TRAILER BODY (cont.)

- Cargo Area: Approx. 66.50" Wide x 291" Long
- Bed Sides: Approx. 15" Tall

WIRING

- DOT / ICC Approved LED Lights and Conspicuity Reflective Tape
- FMVSS / CMVSS Standard 108 LED Lighting
- Sealed Beam, Rubber Mounted Stop, Turn, Tail and Marker Lights
- 100% Sealed Heat-Shrunked Wiring Connections w/ Full Loom
- Breakaway Kit with Absorbed Glass Mat (AGM) Battery

PAINT

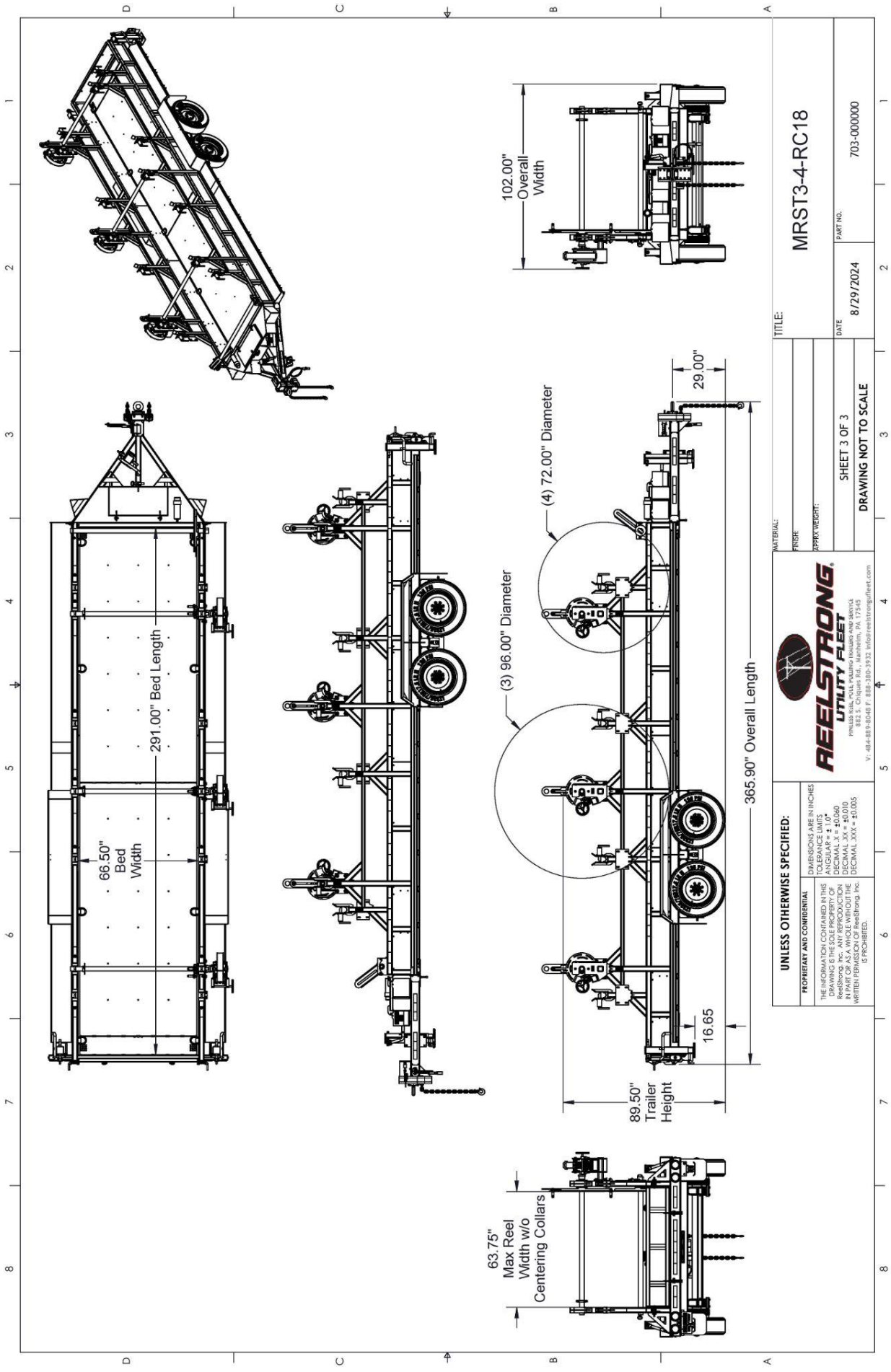
- Biodegradable Pretreat Acid Cleaning (Superior to re-used sandblasting material that can impregnate metals with oil)
- Seams Caulked
- Rust Preventative 2-Part Epoxy Primer
- Standard Colors: Red, Black, White and CAT Yellow

OPTIONS

- 13 HP HONDA Engine Hydraulic Power Pack Comes STANDARD w/ ENGINE COVER, 15 Gallon Reservoir, Replaceable Oil Filter, Pressure Gauge and Solar Fade Resistant Plastic Control Placard. (Electric Start Optional)
- 10-Year Galvanized Structural Warranty (2-Year Painted)
- 3,300 ft/lbs Torque Hydraulic Take-up Retriever. (Motor Spooled w/ Reel Brake ILO Cross-Over Relief Valve for Smooth Instant Reel Stoppage)
- 2-7/16" Universal Adapter for Capstan and Power Reel Attachments
- 7 Inch General Purpose Capstan
- Collapsible Power Reel
- Rotating Arbor Ground
- Rewind Leveler
- 16" Bronze Alloy Ventilated Reel Brake w/ Ventilated Guard
- 16" Long 6-Bolt Hitch Extension (w/ 52" Safety Chains and Breakaway Cable Extension)
- 3" Lunette Eye
- Aluminum or Steel Toolbox
- 10K-HD / 15K / 20K Axles Available w/ Air Brakes
- Anti-Lock Brakes (ABS)
- Wiring Connections Soldered and Sealed w/ Heat Shrink Tubing
- Plug-and-Play Sealco Wiring Harness
- Wheel Chocks: Rubber or All Weather Galvanized Grip Strut
- Spare Tire and Mount
- Solar Charged Breakaway Kit
- Strobe Warning Lights
- All Stainless Steel Fasteners (1/2" and under)

OPTIONS (cont.)

- Hydraulic Front Jack
- Rear Underground Fairlead Roller Attachment (accommodates wooden plank rear gate)
- Non-Cargo Options: Trailer hold 4 x 84" Diameter or 4 x 96" Diameter Reels
- Truck-Lite Lighting
- Lug Nut Indicators



PROPRIETARY AND CONFIDENTIAL THE INFORMATION CONTAINED IN THIS DRAWING IS THE PROPERTY OF REELSTRONG. NO PART OF THIS DRAWING IS TO BE REPRODUCED OR TRANSMITTED IN ANY FORM OR BY ANY MEANS, WITHOUT THE WRITTEN PERMISSION OF ReelStrong, Inc. IS PROHIBITED.		UNLESS OTHERWISE SPECIFIED: DIMENSIONS ARE IN INCHES DECIMALS ARE TO BE ROUNDED TO THE NEAREST ANGULARS ± 0.1° DECIMAL .XX = ±0.060 DECIMAL .XXX = ±0.010 DECIMAL .XXV = ±0.005	
REELSTRONG UTILITY FLEET PENNSYLVANIA POLYMER PRODUCTS AND SERVICES 882 S. Claque Rd., Manheim, PA 17345 P.O. Box 488-8048 Ft. Belknap, MO 64601 Tel: 484-488-8048 Fax: 717-350-9332 Email: reestrong@reestrong.com		MRST3-4-RC18 TITLE:	
SHEET 3 OF 3 DRAWING NOT TO SCALE		DATE: 8/29/2024 PART NO.: 703-000000	