

REELSTRONG[®]

UTILITY FLEET

RS10-12 POWERLOCK™ REEL STAND SPECS



EXCLUSIVE STANDARD ADDED VALUE:

- POWERLOCK™ Technology Provides Industry Leading Safety, Ease of Use, Low Maintenance and Durability.
 - SAFETY and Peace of Mind
 - No Pins, Cotters, or Lanyards that Secure the Reel Arbor (which is the most critical safety point).
 - Faster Reel loading, Unloading, and Deployment Reduces Labor Costs and Fatigue on Workers.
- No Tools Required to Replace Reels

BUILT FOR SAFETY. BUILT FOR SPEED. BUILT TO LAST.

MAX REEL CAPACITY (customizable)

- Diameter: 108"
- Width: 60"
- Weight: 10,000-12,000 lbs.

ARBOR BAR: 3.00" w/ Centering Collar (Optional Reel Adapters Available for Larger Arbor Holes)

DIMENSIONS (w/ Take-up Retriever and 16" Reel Brake)

- Length: 68"
- Width: 102.25"
- Height: 68.25" w/o Reel
- Weight: 1,400 lbs.

Actual Reel Stand Weight will Vary with Options & Finishes Chosen.

DIMENSIONS (w/ 16" Drop-in Reel Brake)

- Length: 68.00"
- Width: 92.00"
- Height: 67.75" w/o Reel
- Weight: 1,150 lbs.

Actual Reel Stand Weight will Vary with Options & Finishes Chosen.

STANDARD FEATURES

- POWERLOCK™ Technology Provides Industry Leading Safety, Ease of Use, Low Maintenance and Durability.
- Arbor Assembly Lifts Out of Brake Dog w/o Side-Shifting the Arbor to Disengage
- No Tools Required to Replace Reels
- Ground Lug: Copper Alloy Bolted to Frame

CONSTRUCTION

- Reinforced Truss on Rectangular Base Frame
- Steel Tube Frame Continuously Welded
- D-Rings Located on Each Corner for Tie Down

PAINT

- Biodegradable Pretreat Acid Cleaning (Superior to re-used sandblasting material that can impregnate metals with oil)
- Rust Preventative 2-Part Epoxy Primer
- Standard Colors: Red, Black, White and CAT Yellow

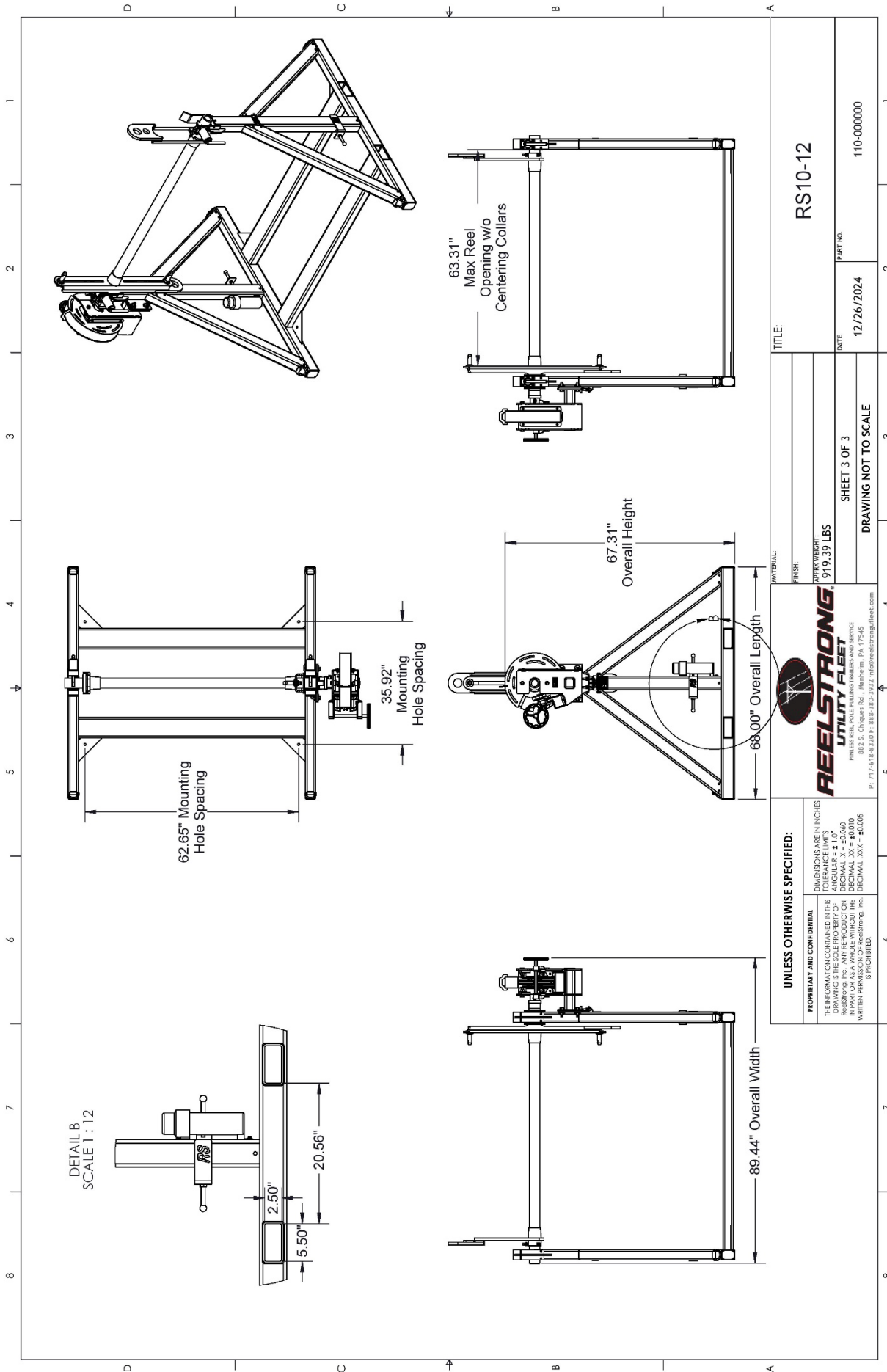
OPTIONS

- 10-Year Galvanized Structural Warranty (2-Year Painted)
- 13 HP HONDA Engine Hydraulic Power Pack Comes STANDARD w/ ENGINE COVER, 15 Gallon Reservoir, Replaceable Oil Filter, Pressure Gauge and Solar Fade Resistant Plastic Control Placard. (Electric Start Optional)

—All specifications / designs are subject to change without notice - All GVWR and reel capacities are de-rateable to your needs.

OPTIONS (cont.)

- 3,300 ft/lbs Torque Hydraulic Take-up Retriever. (Motor Spooled w/ Reel Brake ILO Cross-Over Relief Valve for Smooth Instant Reel Stoppage)
- 2-7/16" Universal Adapter for Capstan and Power Reel Attachments
- 7 Inch General Purpose Capstan
- Collapsible Power Reel
- 12" Bronze Alloy Reel Brake
- 16" Bronze Alloy Ventilated Reel Brake
- Hydraulic Hand Pump, Accumulator, and Pressure Gauge. Smooth Operation and Consistent Brake Pressure. (Pairs with the 16" Reel Brake)
- Conical Package for 2-1/2" Reel Bars
 - "Precision Machined" CONICAL centering collar w/ lift lug (Yellow Zinc Plated)
 - Removable sliding "Precision Machined" CONICAL drive bar cone (Yellow Zinc Plated)
 - Rotating Safety Ground for 2-1/2" Reel Bars
 - Precision Machined w/ Ball Bearings
 - Tin Plated Copper 5/8" Premium Ground Lug
 - Star Washer Secured for Good Grounding Connection
 - Reel Adapters Available for Larger Reel Arbor Holes
 - All Stainless Steel Fasteners (1/2" and under)



DETAIL B
SCALE 1 : 12

TITLE: RS10-12	
MATERIAL:	
FINISH:	
NET WEIGHT: 919.39 LBS	
DATE: 12/26/2024	PART NO. 110-000000
SHEET 3 OF 3	
DRAWING NOT TO SCALE	

FEELSTRONG
UTILITY FLEET

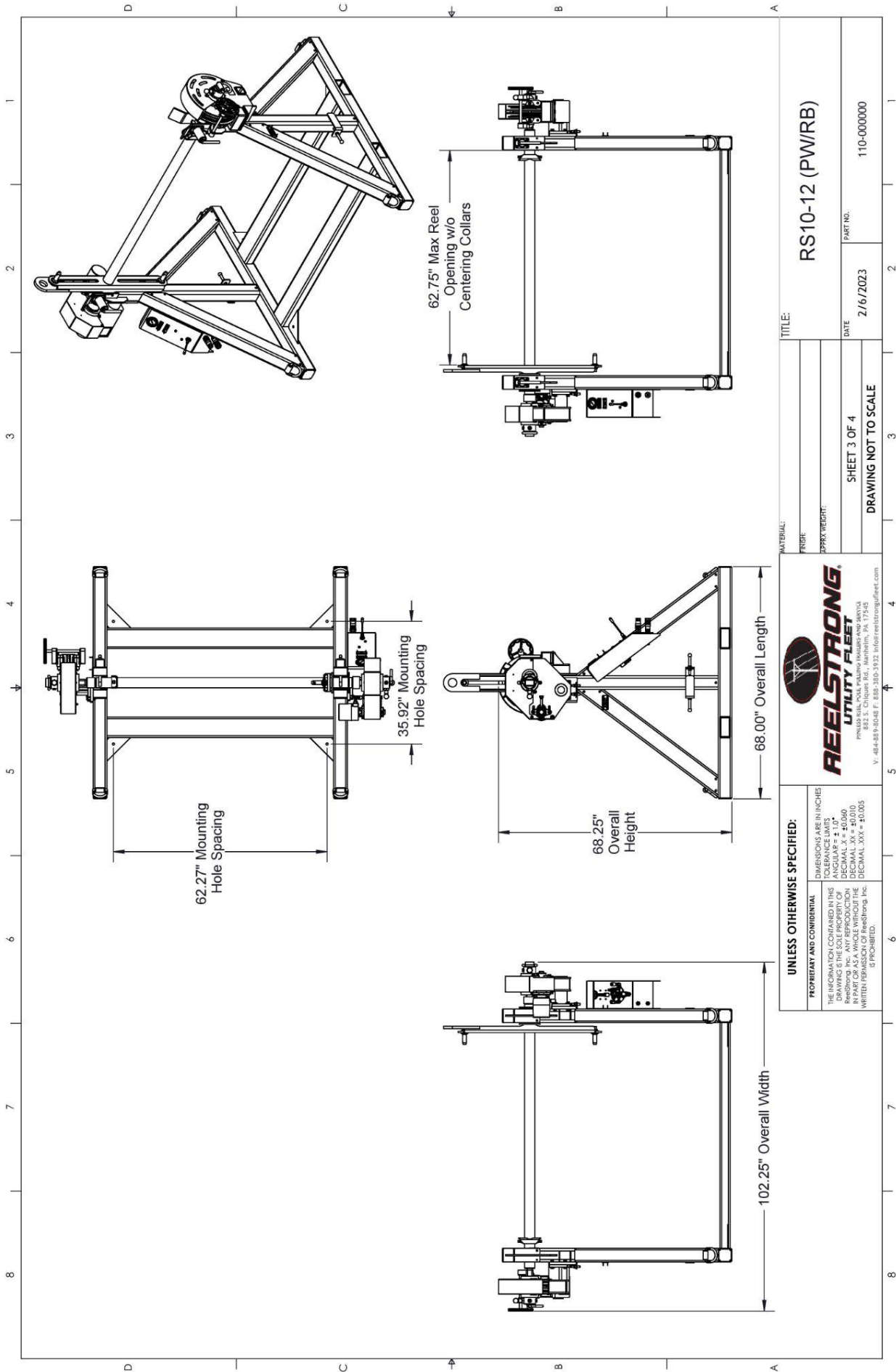
882 S. Chiquet Rd., Marthasville, PA 17545
P: 717-488-8329 F: 888-380-3832 info@feelstrongutility.com

UNLESS OTHERWISE SPECIFIED:

DIMENSIONS ARE IN INCHES
TOLERANCE LIMITS:
FRACTIONS ± 1/16"
DECIMAL ± 0.010
IN PARTS AS A WHOLE WITHOUT THE DECIMAL .XX ± 0.005
WRITTEN PERMISSION OF FeelStrong, Inc. IS PROHIBITED.

PROPRIETARY AND CONFIDENTIAL

THE INFORMATION CONTAINED IN THIS DRAWING IS THE SOLE PROPERTY OF FEELSTRONG, INC. AND IS TO BE USED IN PART OR AS A WHOLE WITHOUT THE WRITTEN PERMISSION OF FEELSTRONG, INC. IS PROHIBITED.



UNLESS OTHERWISE SPECIFIED: PROPRIETARY AND CONFIDENTIAL THE INFORMATION CONTAINED IN THIS DRAWING IS THE SOLE PROPERTY OF REELSTRONG UTILITY FLEET. NO PART OF THIS DRAWING IS TO BE REPRODUCED OR TRANSMITTED IN ANY FORM OR BY ANY MEANS, ELECTRONIC OR MECHANICAL, INCLUDING PHOTOCOPYING, RECORDING, OR BY ANY INFORMATION STORAGE AND RETRIEVAL SYSTEM, WITHOUT THE WRITTEN PERMISSION OF ReelStrong, Inc. IS PROHIBITED.		DIMENSIONS ARE IN INCHES TOLERANCE LIMITS DECIMAL .XX = ±0.040 DECIMAL .XXX = ±0.010 DECIMAL .XXXX = ±0.005	
REELSTRONG UTILITY FLEET 882 S. Chiques Rd., Mahanaim, PA 17245 V: 484-889-8048 F: 888-380-3932 info@reelstrong/fleet.com		TITLE: RS10-12 (PW/RB)	
SHEET 3 OF 4 DRAWING NOT TO SCALE		DATE: 2/6/2023	PART NO.: 110-000000
MATERIAL:	FRIB:	APPROX WEIGHT:	