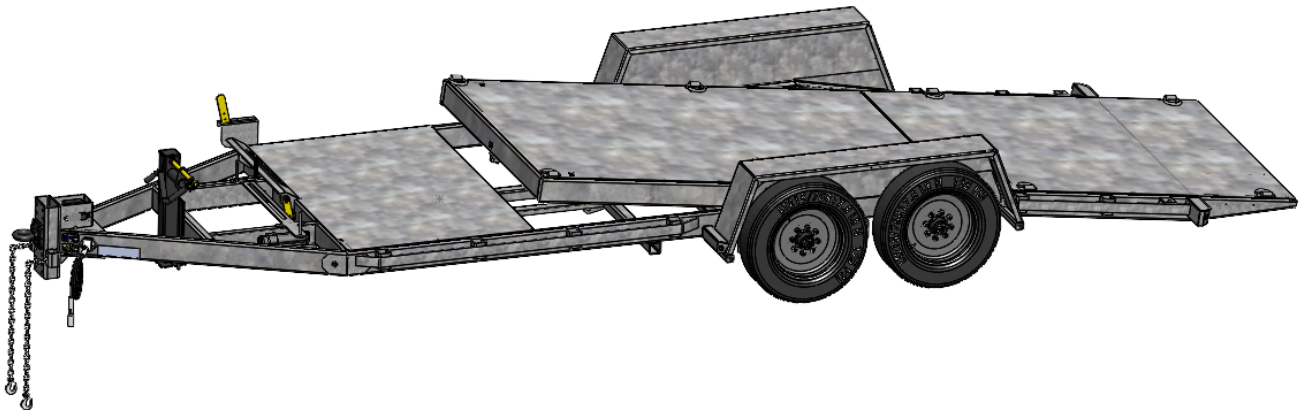
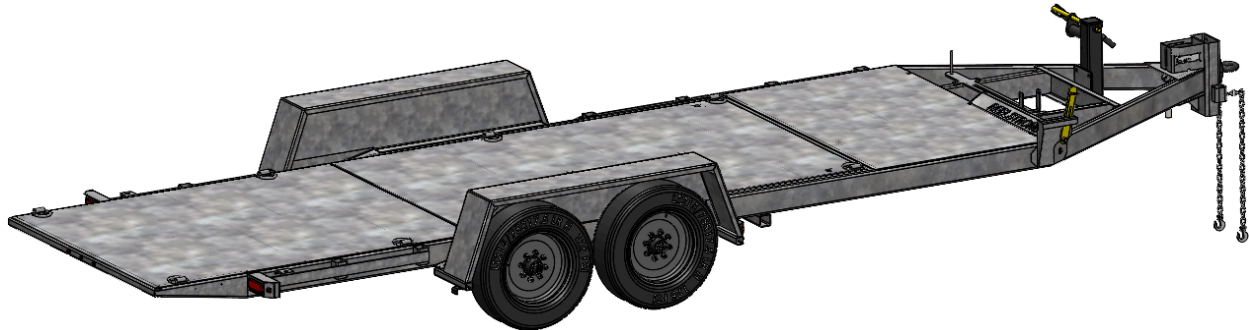


# **REELSTRONG®**

## **UTILITY FLEET**

### **TD13 Tilt-Deck Utility Trailer w/ Pinless, Auto Locking Powerlock™ III Deck Securement**



#### **LOWEST TOTAL COST OF OWNERSHIP (TCO) FROM:**

- Pinless, Auto Locking Powerlock III™ Deck Securement w/ No Loose Pins or Difficult Latch Mechanisms
- Gravity Tilt for Low Maintenance
- Ultimate Ease-of-Use and Safety for the Operator w/ our Auto Locking Design
- **PRACTICAL:** No Expensive, Unnecessary Components, yet we Don't Cut Corners and Provide Premium, Heavy Duty Equipment.

**BUILT FOR SAFETY. BUILT FOR SPEED. BUILT TO LAST.**

**CAPACITIES:** 17,600 lbs. GVWR @ 10% Tongue Weight

**AXLES:** Tandem 8K Sprung Axles

**WHEELS:** (4) 17.5 x 6.75 HC / 8 on 6.5 BC

**TIRES:** (4) LT215/75R17.5 HC LR-H Tires

**BRAKES:** 12.25" x 3.38" Electric w/ Safety Breakaway Kit

**PAYLOAD - ALL FINAL PAYLOADS BASED ON CHOSEN MODEL AND OPTIONS**

**PAYLOAD:** 13,550 lbs. Approx.

**ALL FINAL LENGTHS, WIDTHS, AND WEIGHTS ARE BASED ON CHOSEN MODEL AND OPTIONS**

**OVERALL LENGTH:** 311.12" Approx.

**WIDTH:** 101.00" Approx.

**CURB WEIGHT:** 4,050 lbs. Approx.

**STANDARD FEATURES**

- Oil Bath Hubs (Greaseable Option All)
- Electric Brakes

**STANDARD TRAILER BODY**

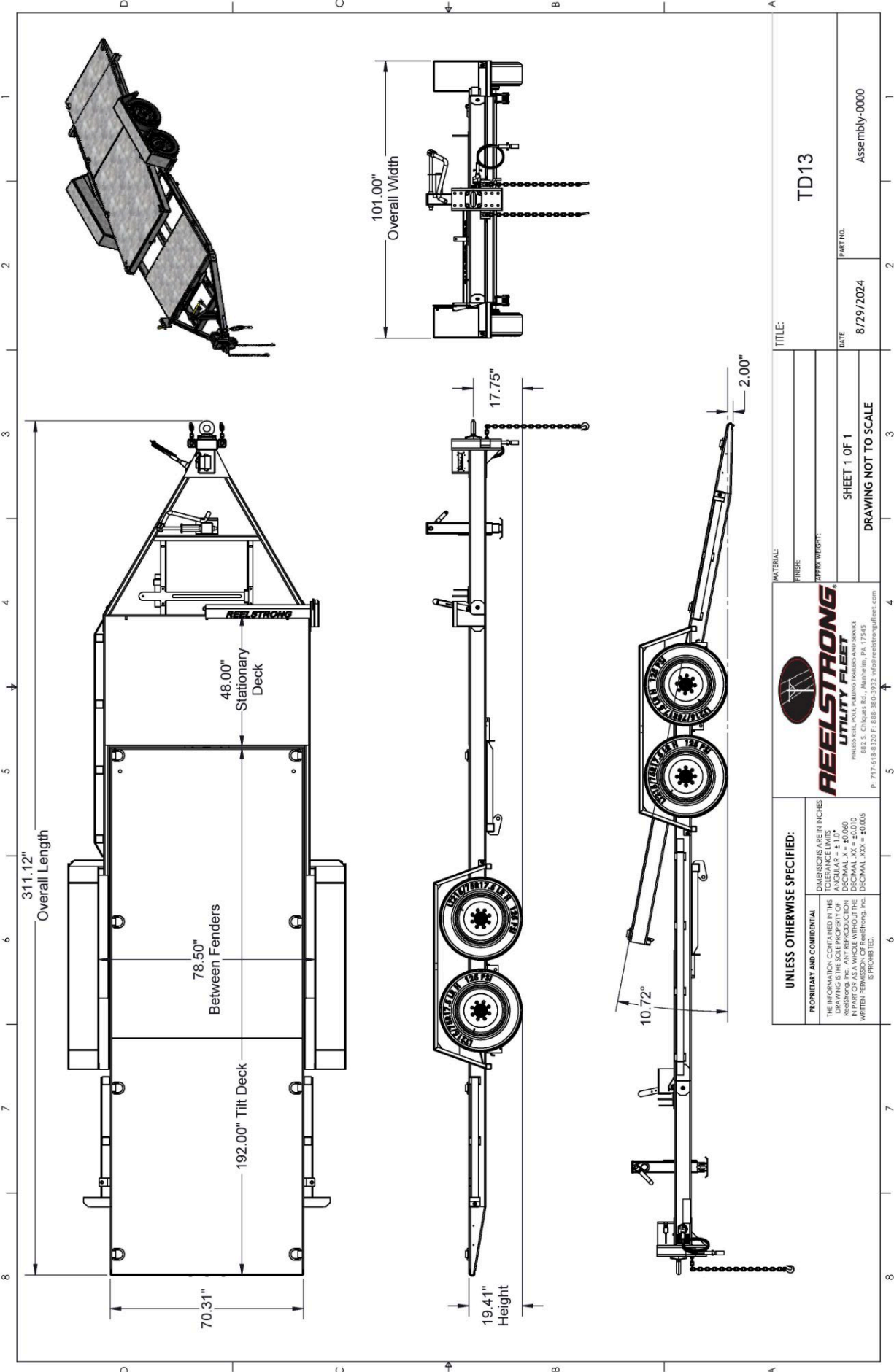
- Heavy Duty 6" X 2" X ¼" Frame
- 8-Position Adjustable Hitch
- ½" X 36" GR70 Yellow Zinc Safety Chains with Hooks
- 12,000 lbs. Static Front Jack w/ Spring Return
- Ground Lug: Copper Alloy Star Washer Bolted to Frame (Welded Optional)
- Fenders: ⅛" Fabricated Diamond Plate

**WIRING**

- DOT / ICC-- FMVSS / CMVSS Approved LED ULTRA- HIGH VISIBILITY 180 DEGREE BULLET Marker and Clearance Lights
- LED Sealed Beam Rubber Mounted Stop, Turn, Tail and Marker Lights
- Breakaway Kit with Absorbed Glass Mat (AGM) Battery
- 100% Sealed Heat-Shrunked Wiring Connections w/ Full Loom
- FULLY PROTECTED 7 or 6 Way Female Plug acts as Junction Box Recessed in FRAME RAIL. No Easily Damaged Plastic Junction Boxes

## OPTIONS

- Ten (10) Year Galvanized Structural Warranty (2-Year Painted)
- 16" Long 6-Bolt Hitch Extension (w/ 52" Safety Chains and Breakaway Cable Extension)
- Aluminum or Steel Toolbox
- Hydraulic Front Jack
- Wiring Connections Soldered and Sealed w/ Heat Shrink Tubing
- Plug-and-Play Sealco Wiring Harness
- Wheel Chocks: Rubber or All Weather Galvanized Grip Strut
- Solar Charged Breakaway Kit
- Strobe Warning Lights
- All Stainless Steel Fasteners (½" and under)
- Truck-Lite Lighting
- Lug Nut Indicators
- 3" Lunette Eye



TITLE: TD13	
MATERIAL:	
FIGURE:	
APPROX. WEIGHT:	
SHEET 1 OF 1	
DRAWING NOT TO SCALE	
DATE: 8/29/2024	PART NO.: Assembly-0000

**UNLESS OTHERWISE SPECIFIED:**

THE INFORMATION CONTAINED IN THIS DRAWING IS THE SOLE PROPERTY OF REELSTRONG UTILITY FLEET. REELSTRONG UTILITY FLEET, INC. AND REELSTRONG UTILITY FLEET, INC. ACCEPT NO LIABILITY FOR REPRODUCTION OF THIS DRAWING WITHOUT THE WRITTEN PERMISSION OF ReelStrong, Inc. © PROHIBITED.

DIMENSIONS ARE IN INCHES  
TOLERANCE LIMITS:  
ANGULAR = ± 1.0°  
DECIMAL = ± 0.015  
DECIMAL XX = ± 0.010  
DECIMAL XXX = ± 0.005

**REELSTRONG UTILITY FLEET**  
822 S. Chiques Rd., Mahanaim, PA 17545  
P: 717-618-8329 F: 888-380-3932 info@reelstrongfleet.com