

REELSTRONG[®]

UTILITY FLEET

SP-ST STICK / PIPE TRAILER SPECS



EXCLUSIVE STANDARD ADDED VALUE:

- Industry Leading Safety, Ease of Use, Low Maintenance and Durability
- No-Bind EZ Slide Stanchions
- UHMW Composite Bunk Pads w/ Countersunk Fasteners
- Low Center of Gravity
- Front Bulkhead to Easily Load and Place Material
- Heavy Duty Winch Straps
- Great Price

BUILT FOR SAFETY. BUILT FOR SPEED. BUILT TO LAST.

CAPACITIES

- SP-ST14: 16,100 lbs. GVWR @ 15% Tongue Weight
- SP-ST20: 22,100 lbs. GVWR @ 15% Tongue Weight

AXLES

- SP-ST14: Tandem 7K lbs. Torsion
- SP-ST20: Tandem 10K lbs. Sprung

WHEELS

- SP-ST14: (4) 16 x 6K / 8 on 6.5 BC w/ Zeroset
- SP-ST20: (4) 17.50 x 6.75 HC / 8 on 6.5 BC w/ 0.19 Inset

TIRES

- SP-ST14: (4) ST-235/85R16 LR-E Tires
- SP-ST20: (4) ST-215/75R17 LR-H Tires

BRAKES

- SP-ST14: 12.00" x 2.00" Electric w/ Safety Breakaway Kit
- SP-ST20: 12.25" x 3.38" Electric w/ Safety Breakaway Kit

PAYLOAD: ALL FINAL PAYLOADS BASED ON CHOSEN MODEL AND OPTIONS

PAYLOAD:

- SP-ST14: 10,250 lbs. Approx.
- SP-ST20: 15,750 lbs. Approx.

OVERALL LENGTH: 558"

OVERALL WIDTH: 96"

CURB WEIGHT:

- SP-ST14: 5,850 lbs. Approx.
 - SP-ST20: 6,350 lbs. Approx.
- Actual Trailer Weight will Vary with Options & Finishes Chosen.*

POLE SEAT HEIGHT: 34"

STANDARD FEATURES

- No-Bind EZ Slide Stanchions
- UHMW Composite Bunk Pads w/ Countersunk Fasteners
- Oil Bath Hubs (Greaseable Option All)
- Electric Brakes
- Wheel Chock Holders
- Heavy Duty Winch Straps
- Front Bulkhead to Easily Load and Place Material

STANDARD FEATURES (cont.)

- Low Center of Gravity

POLE SECUREMENT

- Pole Rests: 5" H Beam w/ Bunk Pads
- Winch Binders, Ratcheting Breaker Bar and Bar Pocket

STANDARD TRAILER BODY

- Heavy Duty 12" Channel Frame
- Heavy Duty 6" Channel Crossmembers
- 7-Position Adjustable Hitch
- 3/8" X 36" GR70 Yellow Zinc Safety Chains with Hooks
- 12,000 lbs. Static Front Jack w/ Spring Return

WIRING

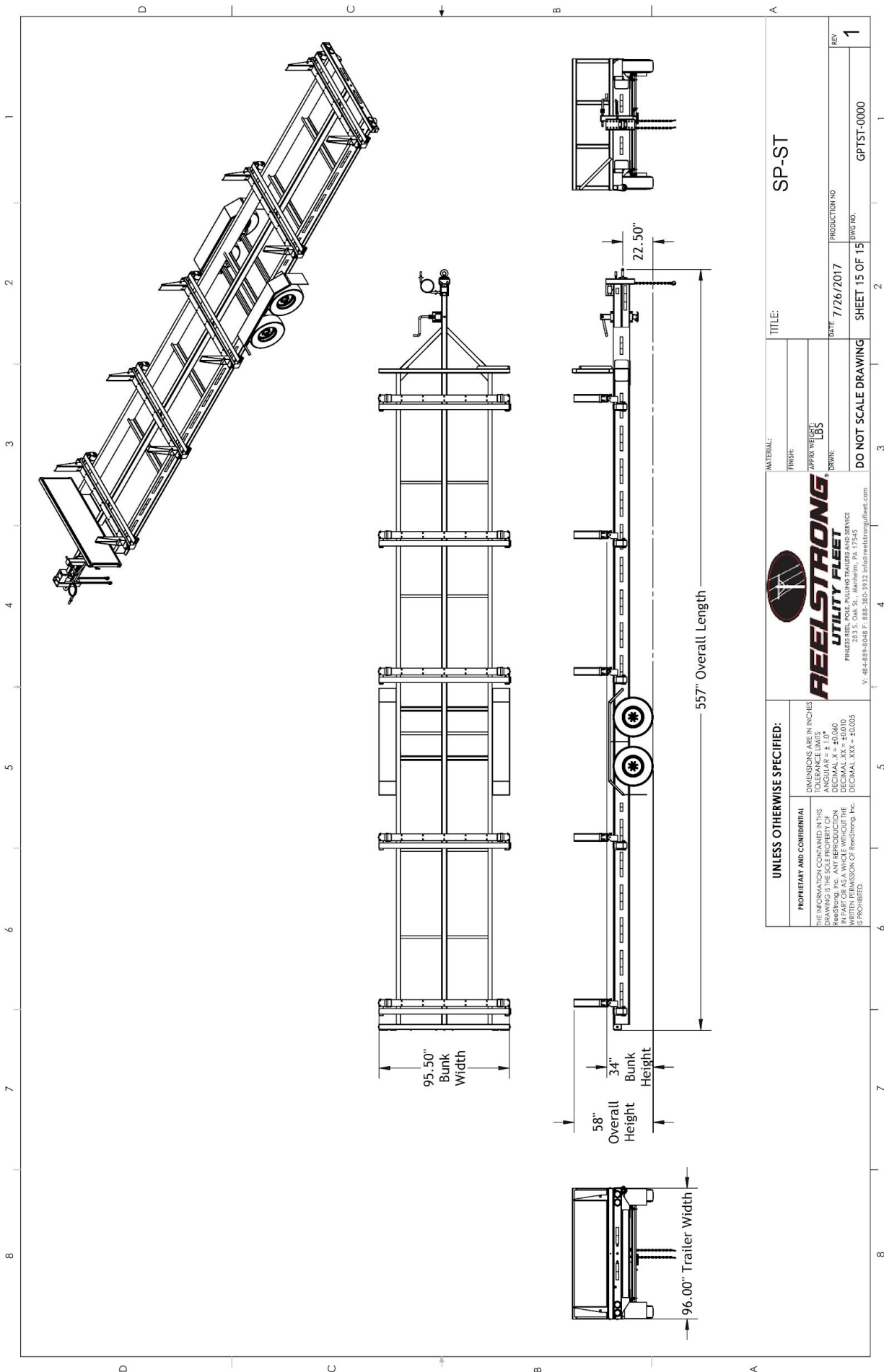
- DOT / ICC Approved LED Lights and Conspicuity Reflective Tape
- Internal Cat Track Protects Wiring (and air brakes if applicable)
- Removable Rear Access Door for Cat Track and Wiring
- Sealed Beam, Rubber Mounted Stop, Turn, Tail and Marker Lights
- 100% Sealed Heat-Shrunk Wiring Connections w/ Full Loom
- Breakaway Kit with Absorbed Glass Mat (AGM) Battery

PAINT

- Biodegradable Pretreat Acid Cleaning (Superior to re-used sandblasting material that can impregnate metals with oil)
- Seams Caulked
- Rust Preventative 2-Part Epoxy Primer
- Standard Colors: Red, Black, White and CAT Yellow

OPTIONS

- 10-Year Galvanized Structural Warranty (2-Year Painted)
- 10K-HD / 15K / 20K Axles Available w/ Air Brakes
- Anti-Lock Brakes (ABS)
- 16" Long 6-Bolt Hitch Extension (w/ 52" Safety Chains and Breakaway Cable Extension)
- 3" Lunette Eye
- Wiring Connections Soldered and Sealed w/ Heat Shrink Tubing
- Plug-and-Play Sealco Wiring Harness
- Wheel Chocks: Rubber or All Weather Galvanized Grip Strut
- Spare Tire and Mount
- Solar Charged Breakaway Kit
- Truck-Lite Lighting
- Lug Nut Indicators



UNLESS OTHERWISE SPECIFIED:		TITLE:		SP-ST	
PROPRIETARY AND CONFIDENTIAL THE INFORMATION CONTAINED IN THIS DRAWING IS THE SOLE PROPERTY OF REELSTRONG, INC. ANY REUSE, REPRODUCTION, OR TRANSMISSION IN PART OR AS A WHOLE WITHOUT THE WRITTEN PERMISSION OF ReelStrong, Inc. IS PROHIBITED.	DIMENSIONS ARE IN INCHES TOLERANCE LIMITS ANGULAR $\pm 1.0^\circ$ LINEAR $\pm .010$ DECIMAL .XX $\pm .0010$ DECIMAL .XXX $\pm .0005$	MATERIAL:		PRODUCTION NO	
		FINISH:		DATE 7/26/2017	
		APPROX WEIGHT LBS		DWG NO.	
				DO NOT SCALE DRAWING	
				SHEET 15 OF 15	
				REV 1	



REELSTRONG®
UTILITY FLEET
283 S. Oak St., Mankato, MN 56001
PHONE: 507-635-3333 FAX: 507-635-3332
V: 484-88-8248 F: 888-380-3932 info@reelstronginc.com

**REELSTRONG**
UTILITY FLEET

PHILADELPHIA, PA 19104
V: 484-889-8048 F: 888-380-3932 info@reelstrongutility.com