

REELSTRONG

UTILITY FLEET

GR POWERLOCK II™ SELF-LOADING REEL TRAILER SPECS



EXCLUSIVE STANDARD ADDED VALUE:

- POWERLOCK II™ Technology Provides Industry Leading Safety, Ease of Use, Low Maintenance, and Durability.
- SAFETY and Peace of Mind
- No Pins, Cotters, or Lanyards that Secure the Reel Arbor (which is the most critical safety point)
- Faster Reel Loading, Unloading, and Deployment Reduce Labor Costs and Fatigue on Workers.

BUILT FOR SAFETY. BUILT FOR SPEED. BUILT TO LAST.

CAPACITIES

- GR3: 5,980 lbs. GVWR @ 15% Tongue Weight (available special order)
- GR6: 9,200 lbs. GVWR @ 15% Tongue Weight (available special order)
- GR8: 11,050 lbs. GVWR @ 15% Tongue Weight
- GR10: 13,800 lbs. GVWR @ 15% Tongue Weight

AXLES

- GR3: 5.2K lbs. Axle
- GR6: 8K lbs. Axle
- GR8: 10K lbs. Axle
- GR10: 12K lbs. Axle

WHEELS

- GR3: (2) 16 x 6K / 6 on 5.5 BC w/ Zeroset
- GR6: (2) 16 x 6K / 8 on 6.5 BC w/ Zeroset
- GR8: (2) 17.5 x 6.75 HC / 8 on 6.5 BC w/ 0.19 Inset
- GR10: (2) 17.5 x 6.75 HC / 8 on 6.5 BC w/ 0.19 Inset

TIRES

- GR3: (2) 235/80R16 LR-D Tires
- GR6: (2) 215/75R17.5 LR-H Tires
- GR8: (2) 215/75R17.5 LR-H Tires
- GR10: (2) 235/75R17.5 LR-J Tires

BRAKES

- GR6: 12" x 2" Electric w/ Safety Breakaway Kit
- GR6: 12.25" x 3.38" Electric w/ Safety Breakaway Kit
- GR8: 12.25" x 3.38" Electric w/ Safety Breakaway Kit
- GR10: 12.25" x 5.00" Electric w/ Safety Breakaway Kit

PAYLOAD: ALL FINAL PAYLOADS BASED ON CHOSEN MODEL AND OPTIONS

REEL WEIGHT (PAYLOAD)

- GR3: 3,000 lbs. Approx.
- GR6: 6,000 lbs. Approx.
- GR8: 8,500 lbs. Approx.
- GR10: 10,000 lbs. Approx.

REEL DIAMETER: 125" Maximum

REEL OPENING

- GR3: 64" Approx.
- GR6: 64" Approx.
- GR8: 64" Approx.

REEL OPENING (cont.)

- GR10: 60.50" Approx.

REEL SHAFT DIAMETER: 2.50" Solid w/ Centering Collars

OVERALL LENGTH:

- GR3: 141.75" Approx.
- GR6: 141.75" Approx.
- GR8: 141.75" Approx.
- GR10: 141.75" Approx.

OVERALL WIDTH: 102" Overall Width

OVERALL WEIGHT:

- GR3: 2,000 lbs. Approx.
- GR6: 2,100 lbs. Approx.
- GR8: 2,200 lbs. Approx.
- GR10: 2,300 lbs. Approx.

Actual Trailer Weight will Vary with Options & Finishes Chosen.

STANDARD FEATURES

- POWERLOCK II™ Technology Provides Industry Leading Safety, Ease of Use, Low Maintenance, and Durability.
- Auto-locking Swing Out Reel Bar Retainer w/ Secondary Cylinder Lock
- Oil Bath Hubs (Greaseable Option All)
- Electric Brakes

STANDARD TRAILER BODY

- Heavy Duty 6" X 4" X ¼" Frame
- 6-Position Adjustable Hitch
- ¾" X 36" GR70 Yellow Zinc Safety Chains with Hooks
- 8,000 lbs. Static Front Jack

WIRING

- DOT / ICC Approved LED Lights and Conspicuity Reflective Tape
- FMVSS / CMVSS Standard 108 LED Lighting
- Sealed Beam, Rubber Mounted Stop, Turn, Tail and Marker Lights
- 100% Sealed Heat-Shrunked Wiring Connections w/ Full Loom
- Breakaway Kit with Absorbed Glass Mat (AGM) Battery

PAINT

- Biodegradable Pretreat Acid Cleaning (Superior to re-used sandblasting material that can impregnate metals with oil)
- Seams Caulked

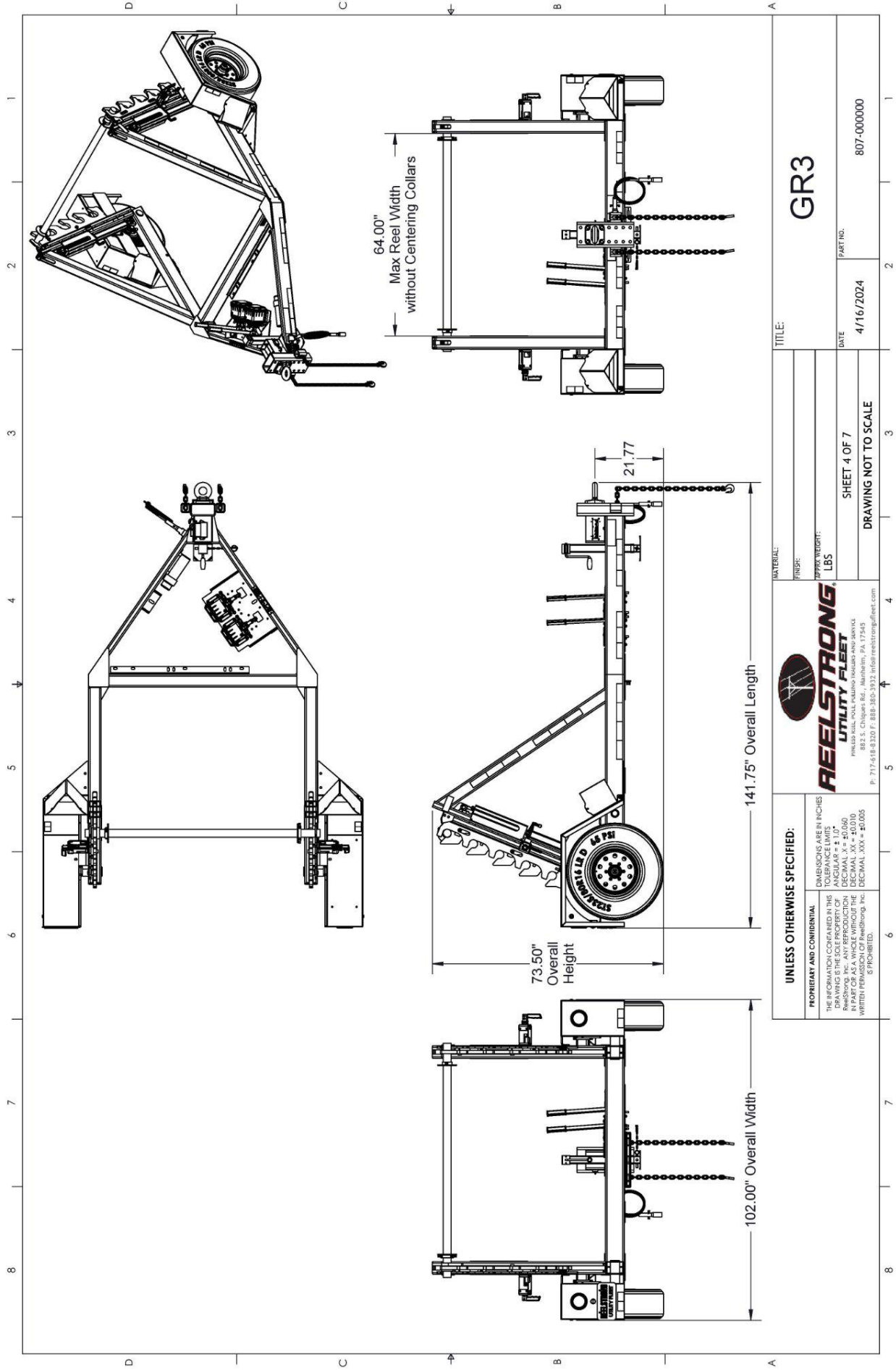
—All specifications / designs are subject to change without notice - All GVWR and reel capacities are de-rateable to your needs.

PAINT (cont.)

- Rust Preventative 2-Part Epoxy Primer
- Standard Colors: Red, Black, White and CAT Yellow

OPTIONS

- 10-Year Galvanized Structural Warranty (2-Year Painted)
- 13 HP HONDA Engine Hydraulic Power Pack Comes STANDARD w/ ENGINE COVER, 15 Gallon Reservoir, Replaceable Oil Filter, Pressure Gauge and Solar Fade Resistant Plastic Control Placard. (Electric Start Optional)
- Rim Drive Take-up Retriever
- 16" Long 6-Bolt Hitch Extension (w/ 52" Safety Chains and Breakaway Cable Extension)
- 3" Lunette Eye
- Rotating Arbor Ground
- Wiring Connections Soldered and Sealed w/ Heat Shrink Tubing
- Plug-and-Play Sealco Wiring Harness
- Wheel Chocks: Rubber or All Weather Galvanized Grip Strut
- Spare Tire and Mount
- Solar Charged Breakaway Kit
- All Stainless Steel Fasteners (1/2" and under)
- 13 HP Honda Engine Hydraulic Power Unit
- Engine Cover
- 9" Bronze Overspin Brake
- Truck-Lite Lighting
- Lug Nut Indicators



UNLESS OTHERWISE SPECIFIED:

DIMENSIONS ARE IN INCHES

TOLERANCE LIMITS

DECIMAL .125 = ±.010

DECIMAL .25 = ±.010

DECIMAL .50 = ±.010

DECIMAL .75 = ±.010

DECIMAL .125 = ±.005

DECIMAL .25 = ±.005

DECIMAL .50 = ±.005

DECIMAL .75 = ±.005

FRONT VIEW

RIGHT SIDE VIEW

REAR VIEW

REELESTRONG
UTILITY FLEET

PHILADELPHIA, PA. 19104-1000

882 S. Clippens Rd., Manheim, PA 17343

P: 717-451-8320 F: 888-360-3935 info@reelstrongutility.com

MATERIAL:

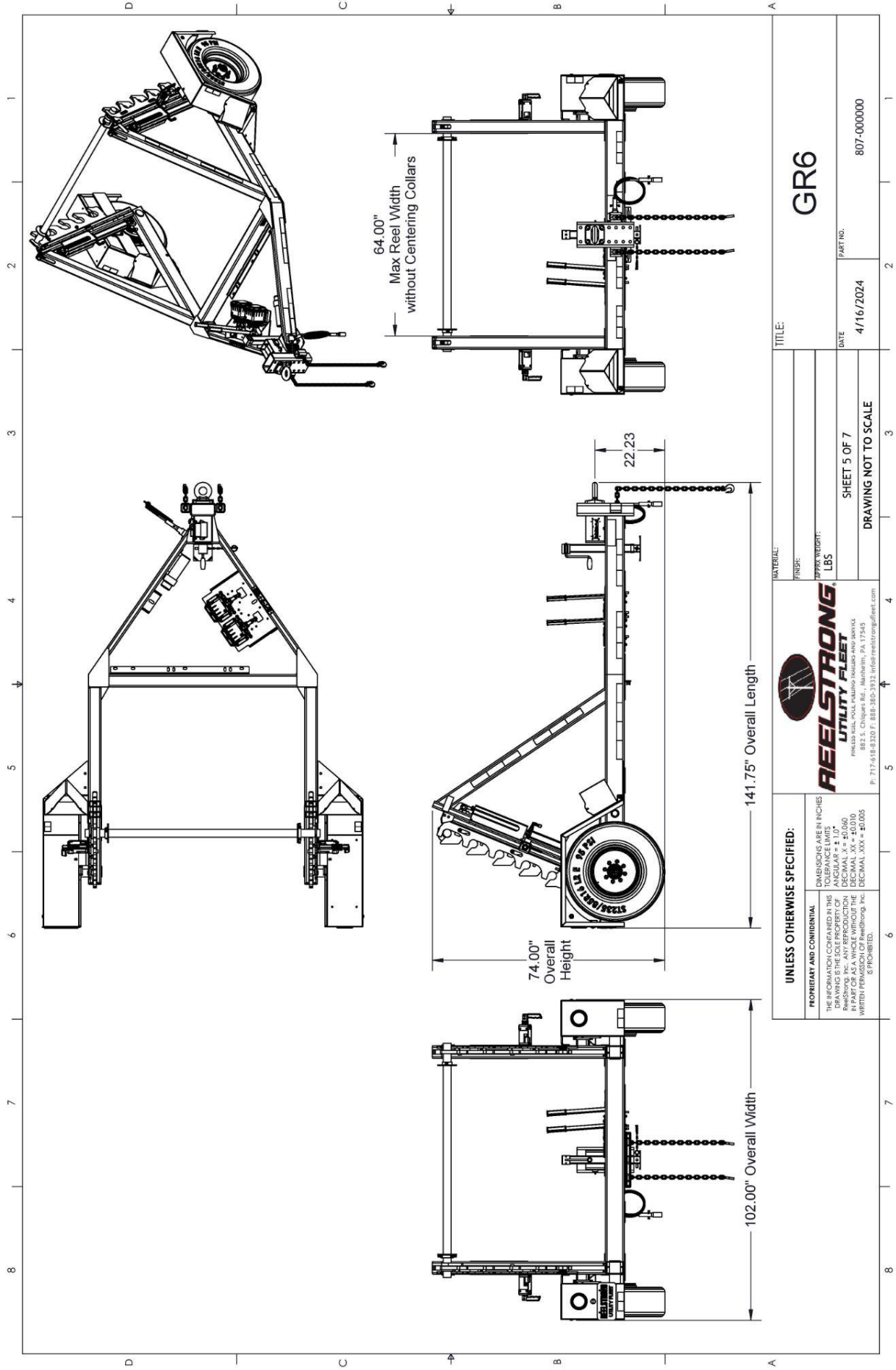
FINISH:

APPROX WEIGHT: LBS

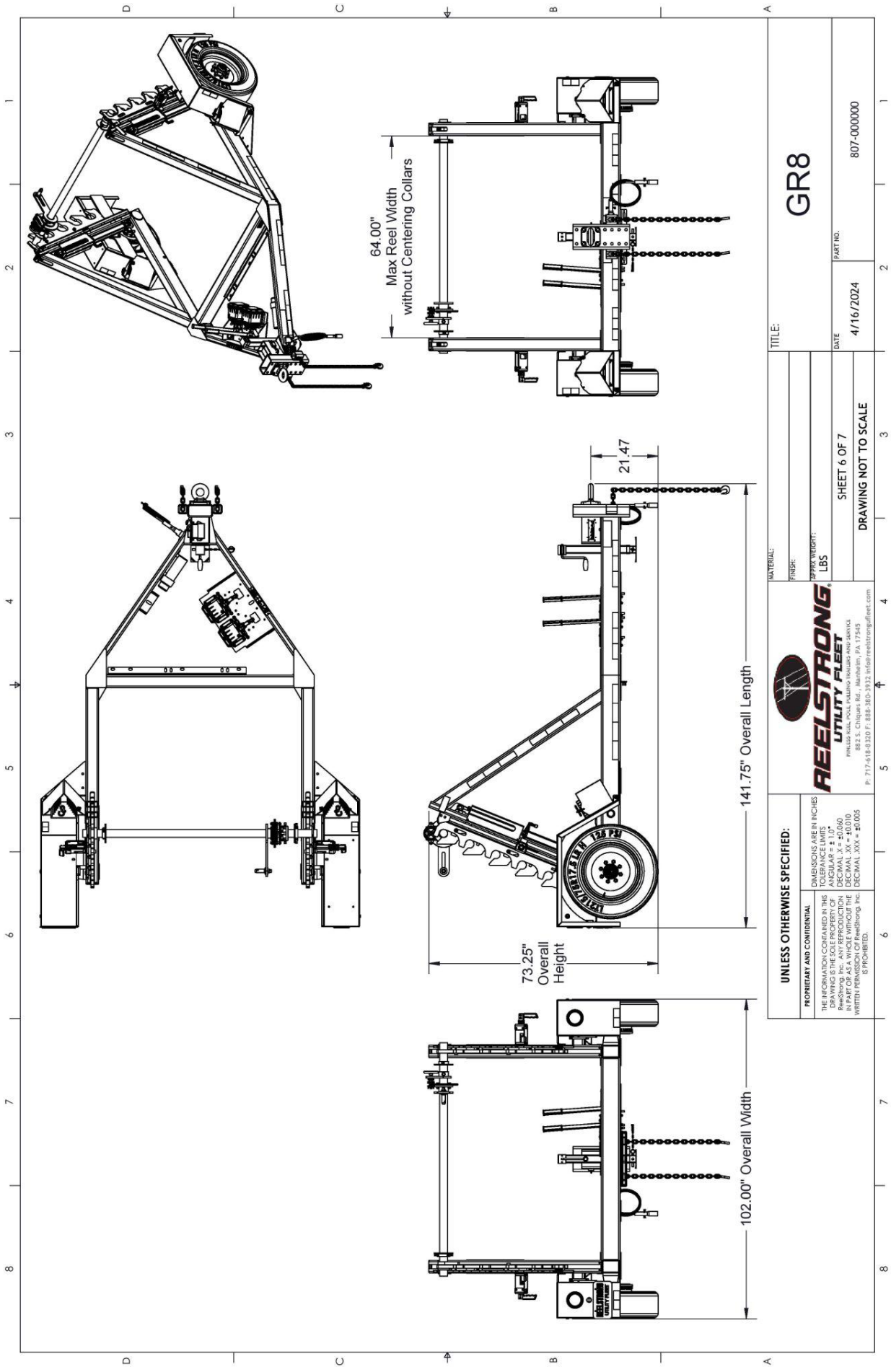
TITLE:

PROPRIETARY AND CONFIDENTIAL

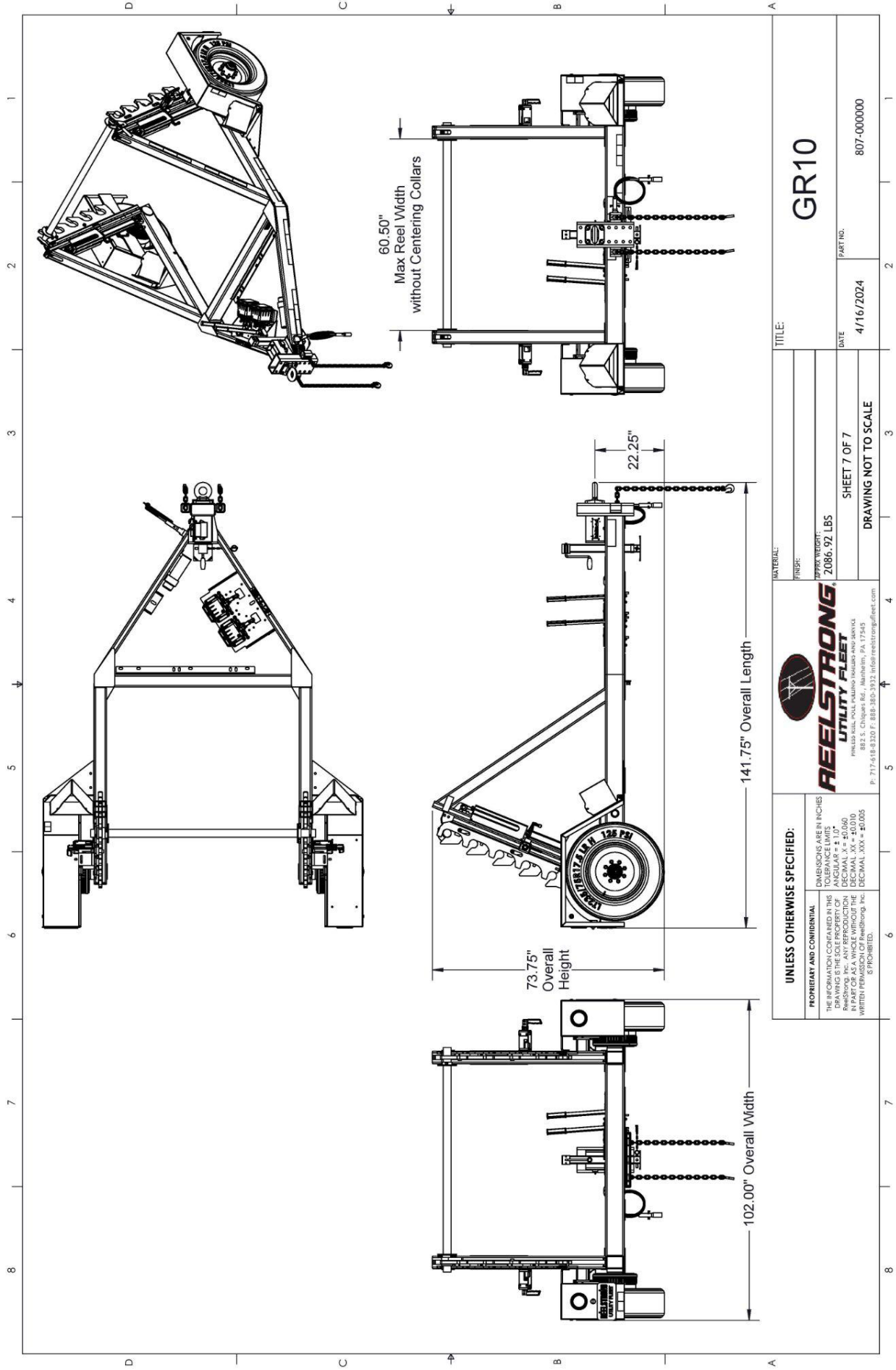
THE INFORMATION CONTAINED IN THIS DRAWING IS THE SOLE PROPERTY OF REELESTRONG UTILITY FLEET. NO PART OF THIS DRAWING IS TO BE REPRODUCED OR TRANSMITTED IN ANY FORM OR BY ANY MEANS, ELECTRONIC OR MECHANICAL, WITHOUT THE WRITTEN PERMISSION OF Reelstrong, Inc. IS PROHIBITED.



UNLESS OTHERWISE SPECIFIED: DIMENSIONS ARE IN INCHES TOLERANCE LIMITS DECIMAL .XX = ±0.010 DECIMAL .XXX = ±0.005 IS PROHIBITED.		REELSTRONG UTILITY FLEET <small>PHILADELPHIA, PA. POLYMER SOLUTIONS AND SERVICE 882 S. Clippens Rd., Manheim, PA 17343 P: 717-518-8320 F: 888-380-3932 info@reelstrongutility.com</small>	
GR6		TITLE:	
SHEET 5 OF 7 DRAWING NOT TO SCALE		DATE: 4/16/2024	
APPROX WEIGHT: LBS		PART NO.: 807-000000	



UNLESS OTHERWISE SPECIFIED: DIMENSIONS ARE IN INCHES TOLERANCE LIMITS DECIMAL .005 FRACTIONAL 1/16 HOLE SIZE .0010 HOLE POSITION .0050 HOLE DIA. .0010 HOLE LENGTH .0050 HOLE TAPER .0050 HOLE CHAMFER .0050 HOLE DEPTH .0050 HOLE DRILLING .0050 HOLE FINISH .0050 HOLE TOLERANCE .0050 HOLE POSITION TOLERANCE .0050 HOLE DIA. TOLERANCE .0050 HOLE LENGTH TOLERANCE .0050 HOLE TAPER TOLERANCE .0050 HOLE CHAMFER TOLERANCE .0050 HOLE DEPTH TOLERANCE .0050 HOLE DRILLING TOLERANCE .0050 HOLE FINISH TOLERANCE .0050 HOLE TOLERANCE .0050 HOLE POSITION TOLERANCE .0050 HOLE DIA. TOLERANCE .0050 HOLE LENGTH TOLERANCE .0050 HOLE TAPER TOLERANCE .0050 HOLE CHAMFER TOLERANCE .0050 HOLE DEPTH TOLERANCE .0050 HOLE DRILLING TOLERANCE .0050 HOLE FINISH TOLERANCE .0050		PROPRIETARY AND CONFIDENTIAL THE INFORMATION CONTAINED IN THIS DRAWING IS THE SOLE PROPERTY OF REELSTRONG UTILITY FLEET. NO PART OF THIS DRAWING IS TO BE REPRODUCED OR TRANSMITTED IN ANY FORM OR BY ANY MEANS, ELECTRONIC OR MECHANICAL, INCLUDING PHOTOCOPYING, RECORDING, OR BY ANY INFORMATION STORAGE AND RETRIEVAL SYSTEM, WITHOUT THE WRITTEN PERMISSION OF Reelstrong, Inc. IS PROHIBITED.	
REELSTRONG UTILITY FLEET PHILADELPHIA, PA 19103-1000 882 S. Clippens Rd., Manheim, PA 17343 P: 717-548-8320 F: 888-360-5932 info@reelstrongutility.com		TITLE: GR8 DATE: 4/16/2024 PART NO.: 807-000000 SHEET 6 OF 7 DRAWING NOT TO SCALE	



UNLESS OTHERWISE SPECIFIED:

DIMENSIONS ARE IN INCHES
 TOLERANCE LIMITS
 DECIMAL .5 = ±0.005
 DECIMAL .XX = ±0.010
 DECIMAL .XXX = ±0.005
 IS PROHIBITED.

REELSTRONG UTILITY FLEET

PHILADELPHIA, PA 19104
 882 S. Cluques Rd., Manheim, PA 17343
 P: 717-518-8320 F: 888-380-3935 info@reelstrongoffroad.com

MATERIAL:
 FINISH:
 APPROX WEIGHT:
 2086.92 LBS

TITLE: **GR10**

DATE: 4/16/2024

PART NO.: 807-000000

SHEET 7 OF 7

DRAWING NOT TO SCALE